

# CORNER RECORD

COUNTY OF PLACER T. 15N R. 16E M.D.B & MERIDIAN CALIFORNIA

CORNER TYPE: GOV'T. CORNER  MEANDER  RANCHO  CONTROL  OTHER   
 CORNER IDENTIFICATION - DATE OF VISIT 8-7 1989



LOT 3, TAHOE PINES, BK. C, PG. 12

CORNER - LEFT AS FOUND  FOUND AND TAGGED  REESTABLISHED OBLITERATED CORNER  REBUILT

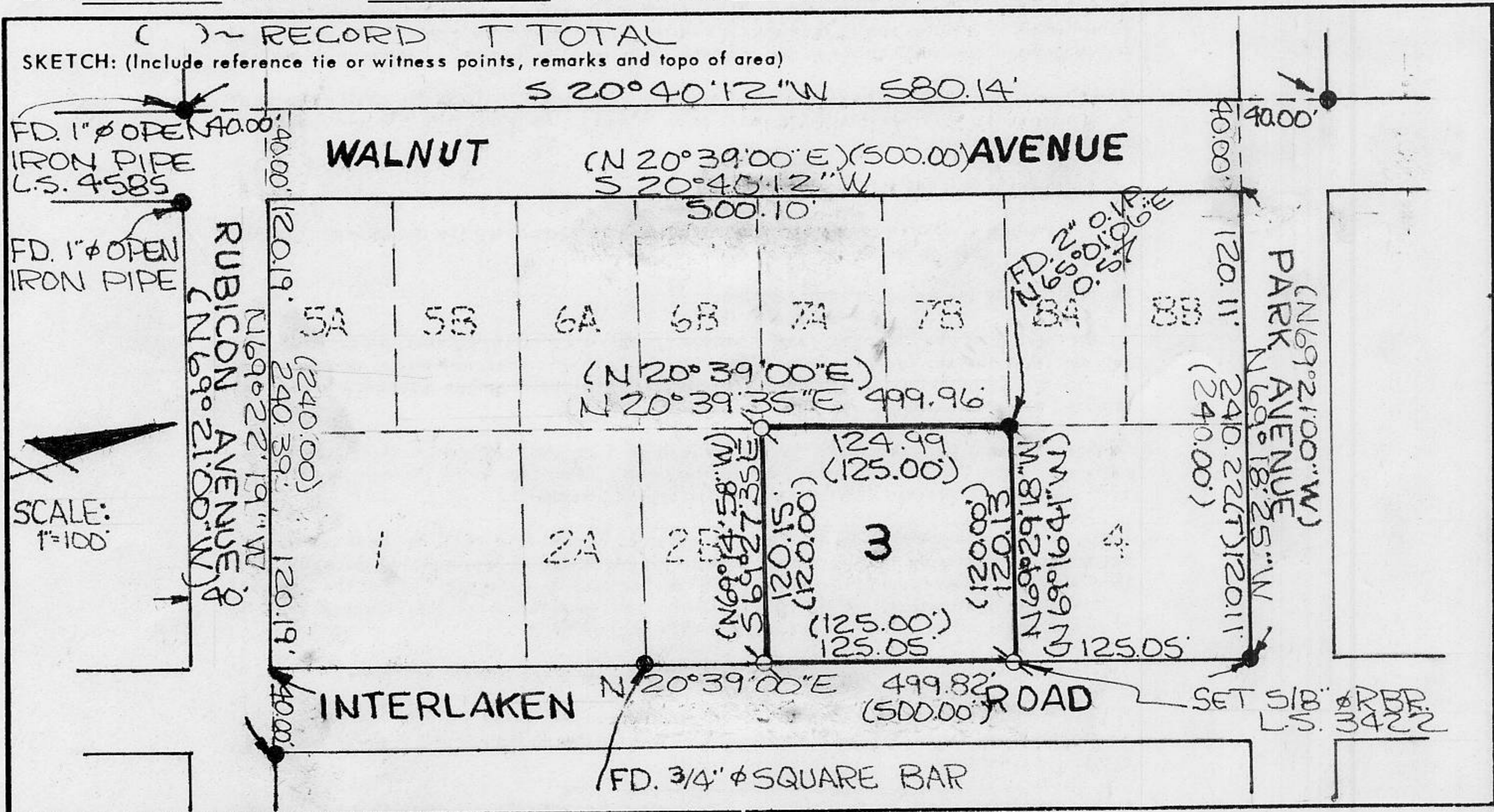
PHYSICAL DESCRIPTION OF CORNER FOUND: EVIDENCE AND METHOD USED TO IDENTIFY OR REESTABLISH

● ~ FOUND 1" Ø OPEN IRON PIPE, UNLESS OTHERWISE INDICATED ~ USED BLOCK BREAKDOWN TO RE-ESTABLISH REAR CORNERS AND VERIFY FRONT CORNER FOUND ~ FRONT CORNER ON LINE USED FOR PRORATE

PHYSICAL DESCRIPTION OF MONUMENTS REBUILT OR PERPETUATED

Q ~ SET 5/8" Ø REBAR, TAGGED WITH YELLOW PLASTIC CAP, L.S. 3422, UNLESS OTHERWISE INDICATED

CALIFORNIA COORDINATE SYSTEM ORDER: FIRST  SECOND  THIRD  N/A  
 STATIONS USED: NGS (USC & GS)  STATE  COUNTY  OTHER  STATION \_\_\_\_\_ STATION \_\_\_\_\_  
 ZONE \_\_\_\_\_ ELEVATION \_\_\_\_\_ NORTHINGS (Y) \_\_\_\_\_ EASTINGS (X) \_\_\_\_\_



### SURVEYOR'S CERTIFICATE

THIS CORNER RECORD WAS PREPARED BY ME OR UNDER MY DIRECTION IN CONFORMANCE WITH THE LAND SURVEYORS ACT ON August 26

SIGNED: \_\_\_\_\_

L.S. or R.C.E. No.: L.S. 3422



### COUNTY SURVEYOR'S CERTIFICATE

THIS CORNER RECORD WAS RECEIVED AND EXAMINED AND FILED 11/9 1989

BY: John Riefers

TITLE: DEPUTY COUNTY SURVEYOR

DOCUMENT No. \_\_\_\_\_

STATEMENT ON BACK OF SHEET

YES  NO

J.N. 403.00

BOOK 2 CORNER RECORDS PAGE 18