

CORNER RECORD

COUNTY OF PLACER T. 16N R. 17E M.D. MERIDIAN CALIFORNIA

CORNER TYPE: GOV'T. CORNER MEANDER RANCHO CONTROL OTHER
 CORNER IDENTIFICATION - DATE OF VISIT 8-14 1989



LOT 5, D MAPS 25, AS PER. 7 R.O.S. 69

CORNER - LEFT AS FOUND FOUND AND TAGGED REESTABLISHED OBLITERATED CORNER REBUILT

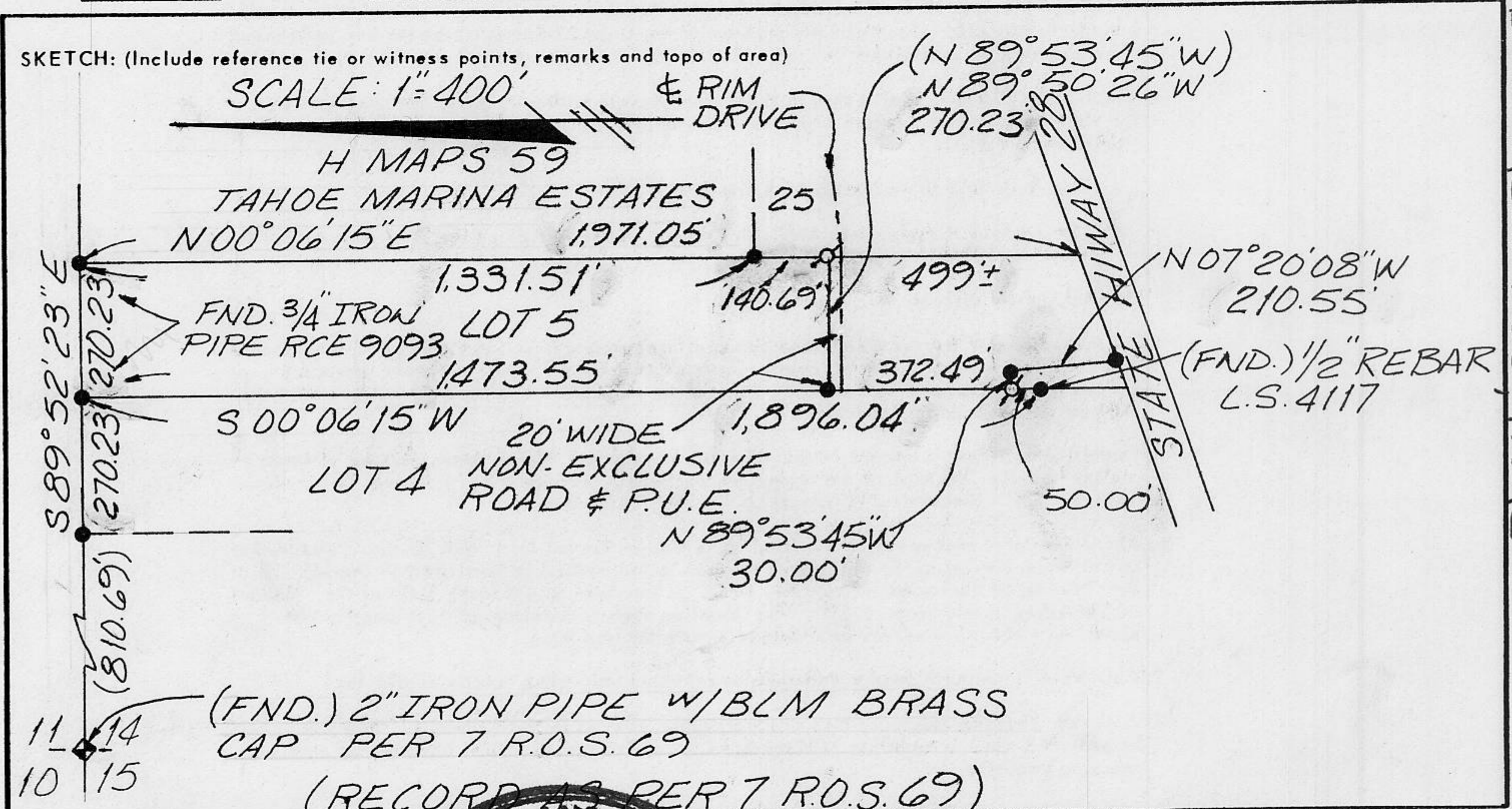
PHYSICAL DESCRIPTION OF CORNER FOUND: EVIDENCE AND METHOD USED TO IDENTIFY OR REESTABLISH

- ~ (FND.) $3/4$ " CAPPED IRON PIPE, STAMPED L.S. 4117
- ~ 1978, UNLESS OTHERWISE INDICATED.

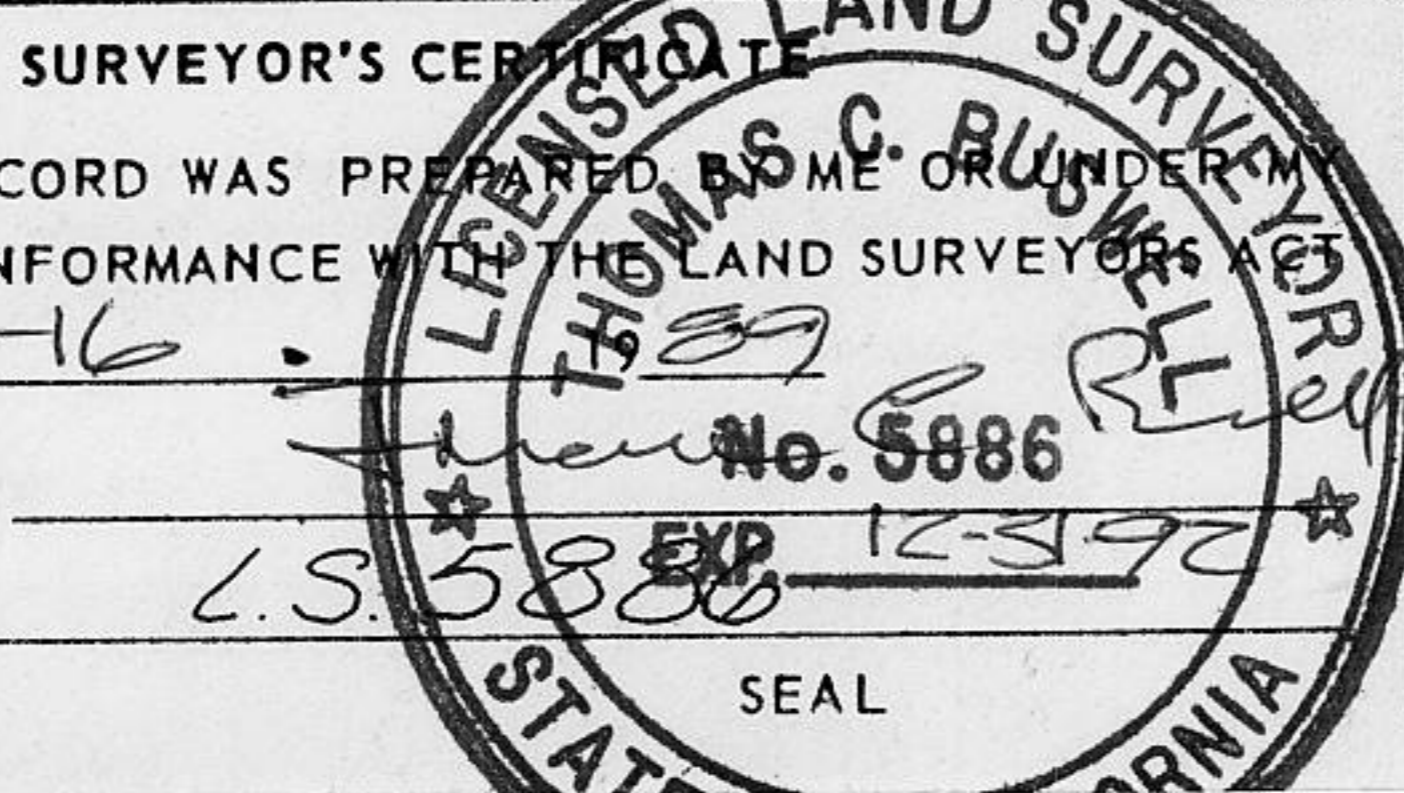
PHYSICAL DESCRIPTION OF MONUMENTS REBUILT OR PERPETUATED

• ~ (SET) $5/8$ " ϕ REBAR w/YELLOW PLASTIC CAP L.S. 5886

CALIFORNIA COORDINATE SYSTEM ORDER: FIRST SECOND THIRD N/A
 STATIONS USED: NGS (USC & GS) STATE COUNTY OTHER STATION _____ STATION _____
 ZONE _____ ELEVATION _____ NORTHINGS (Y) _____ EASTINGS (X) _____



11 14 (FND.) 2" IRON PIPE w/BLM BRASS
 10 15 CAP PER 7 R.O.S. 69
 (RECORD AS PER 7 R.O.S. 69)



SURVEYOR'S CERTIFICATE
 THIS CORNER RECORD WAS PREPARED BY ME OR UNDER MY
 DIRECTION IN CONFORMANCE WITH THE LAND SURVEYORS ACT
 ON 8-16 1989
 SIGNED: _____
 L.S. or R.C.E. No.: L.S. 5886

COUNTY SURVEYOR'S CERTIFICATE
 THIS CORNER RECORD WAS RECEIVED 11/09 1989
 AND EXAMINED AND FILED W/O 1989
 BY: John R. Higgins
 TITLE: DEPUTY COUNTY SURVEYOR
 DOCUMENT No. _____
 STATEMENT ON BACK OF SHEET

YES NO

JN. 411.00

BOOK 2, CORNER RECORDS PAGE 20