

# CORNER RECORD

COUNTY OF PLACER T. 16N R. 17E M.D. M.D. MERIDIAN CALIFORNIA

CORNER TYPE: GOV'T. CORNER  MEANDER  RANCHO  CONTROL  OTHER   
 CORNER IDENTIFICATION - DATE OF VISIT 8-15 1989



EAST LINE LOT 3 AS PER BOOK 8 OF SURVEYS AT PAGE 102

CORNER - LEFT AS FOUND  FOUND AND TAGGED  REESTABLISHED OBLITERATED CORNER  REBUILT

PHYSICAL DESCRIPTION OF CORNER FOUND: EVIDENCE AND METHOD USED TO IDENTIFY OR REESTABLISH \_\_\_\_\_

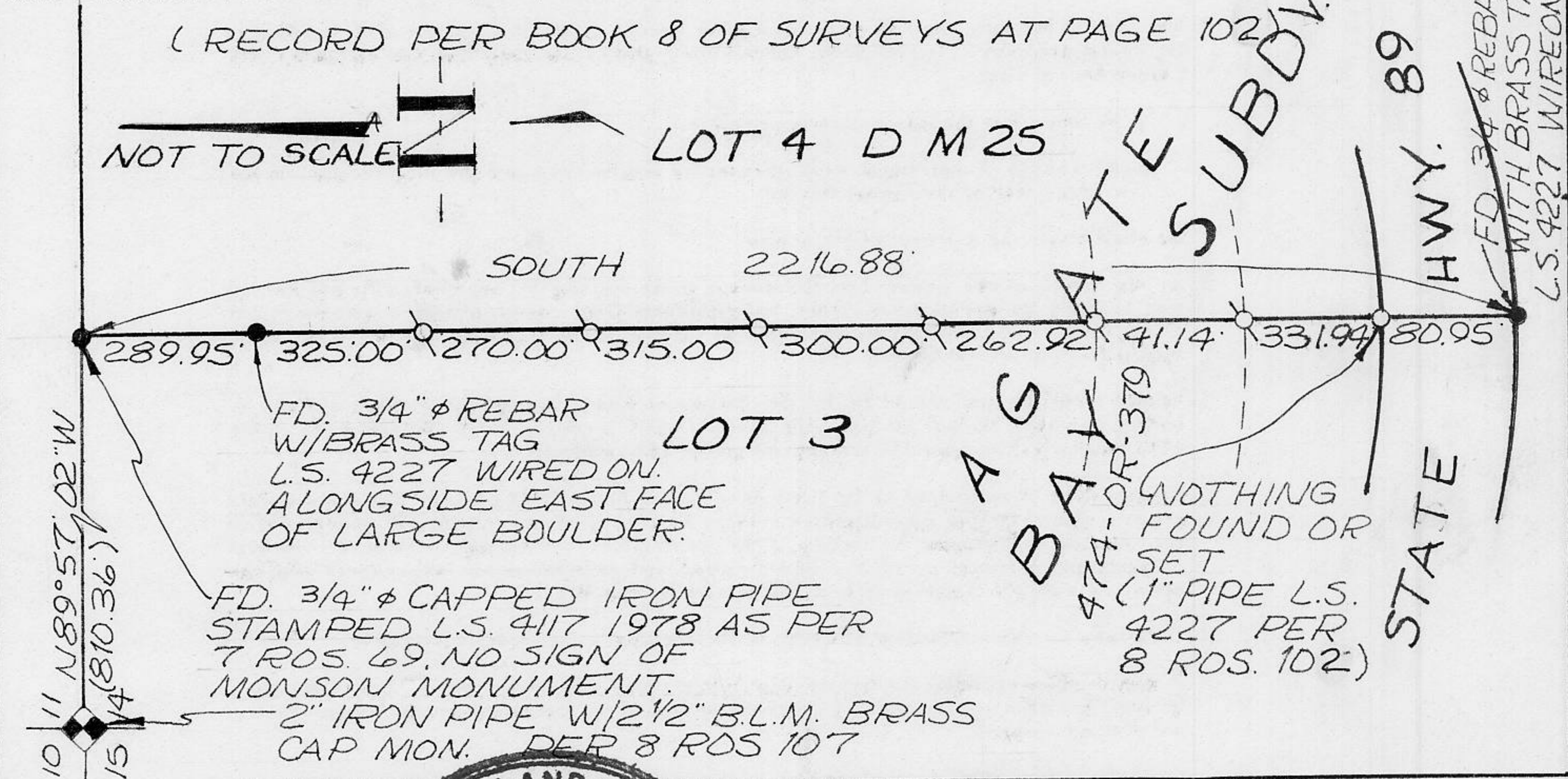
● ~ FOUND MONUMENTS AS INDICATED, MANY LINE POINTS SET BY MONSON IN 1980 APPEARED TO HAVE BEEN REMOVED. EVIDENCE WAS FOUND IN ABUNDANCE AT EACH LOCATION INDICATING MONUMENTS HAD BEEN SET.

PHYSICAL DESCRIPTION OF MONUMENTS REBUILT OR PERPETUATED \_\_\_\_\_

Q ~ SET 5/8"  $\phi$  REBAR WITH YELLOW PLASTIC CAP L.S. 5886 IN CONCRETE WITH 36" "T BAR" POST NEARBY

CALIFORNIA COORDINATE SYSTEM ORDER: FIRST  SECOND  THIRD  N/A  
 STATIONS USED: NGS (USC & GS)  STATE  COUNTY  OTHER  STATION \_\_\_\_\_ STATION \_\_\_\_\_  
 ZONE \_\_\_\_\_ ELEVATION \_\_\_\_\_ NORTHINGS (Y) \_\_\_\_\_ EASTINGS (X) \_\_\_\_\_

SKETCH: (Include reference tie or witness points, remarks and topo of area)



**SURVEYOR'S CERTIFICATE**  
 THIS CORNER RECORD WAS PREPARED BY ME OR UNDER MY DIRECTION IN CONFORMANCE WITH THE LAND SURVEYORS ACT ON 8-15 1989  
 SIGNED: Thomas C. Busby  
 L.S. or R.C.E. No.: L.S. 5886  
 No. 5886  
 EXP. 12-31-92  
 SEAL

**COUNTY SURVEYOR'S CERTIFICATE**  
 THIS CORNER RECORD WAS RECEIVED AND EXAMINED AND FILED 11/9 1989  
 BY: John R. Rogers  
 TITLE: DEPUTY COUNTY SURVEYOR  
 DOCUMENT No. \_\_\_\_\_  
 STATEMENT ON BACK OF SHEET  
 J.N. 411.00 YES  NO

BOOK 2, CORNER RECORDS PAGE 21