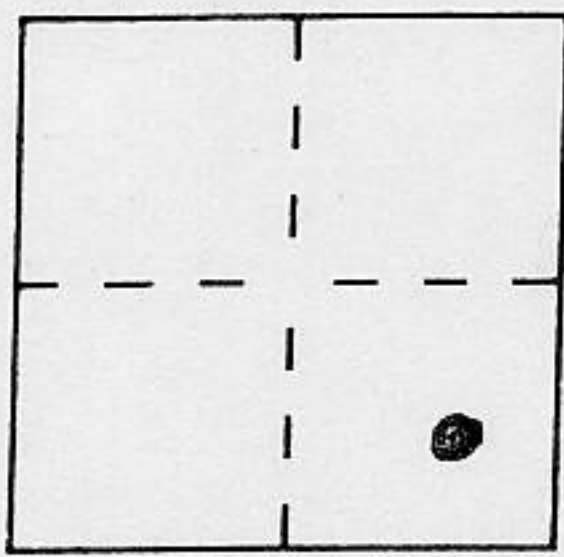


CORNER RECORD

Document Number _____

City of _____ County of PLACER, California

Brief Legal Description LOT 7 BLOCK "H" SQUAW VALLEY ESTATES SUBD. NO. 2
BOOK "E" OF MAPS PAGE 82



SEC. 29
T. 16 N.
R. 16 E.
M. D. M.

CORNER TYPE

Government Corner Control
 Meander Property
 Rancho Other
 Date of Survey 8/16/96

COORDINATES (Optional)

N. _____
 E. _____
 Zone _____ Datum _____
 Elev. _____

Corner — Left as found Found and tagged Established Reestablished Rebuilt

Identification and type of corner found: Evidence used to identify or procedure used to establish or reestablish the corner:

- = FOUND 3/4" REBAR, NO TAG
- = FOUND 5/8" DIA. BOLT, NO TAG
- = FOUND 1/2" REBAR, NO TAG
- ⊙ = FOUND 3/4" REBAR w/TAG, STAMPED L.S. 3714

A description of the physical condition of the monument as found and as set or reset:

- = SET 3/4" IRON PIPE w/PLASTIC PLUG, STAMPED L.S. 5549

JN 9698

SURVEYOR'S STATEMENT

This Corner Record was prepared by me or under my direction in conformance with the Land Surveyors' Act on AUG. 17 19 96

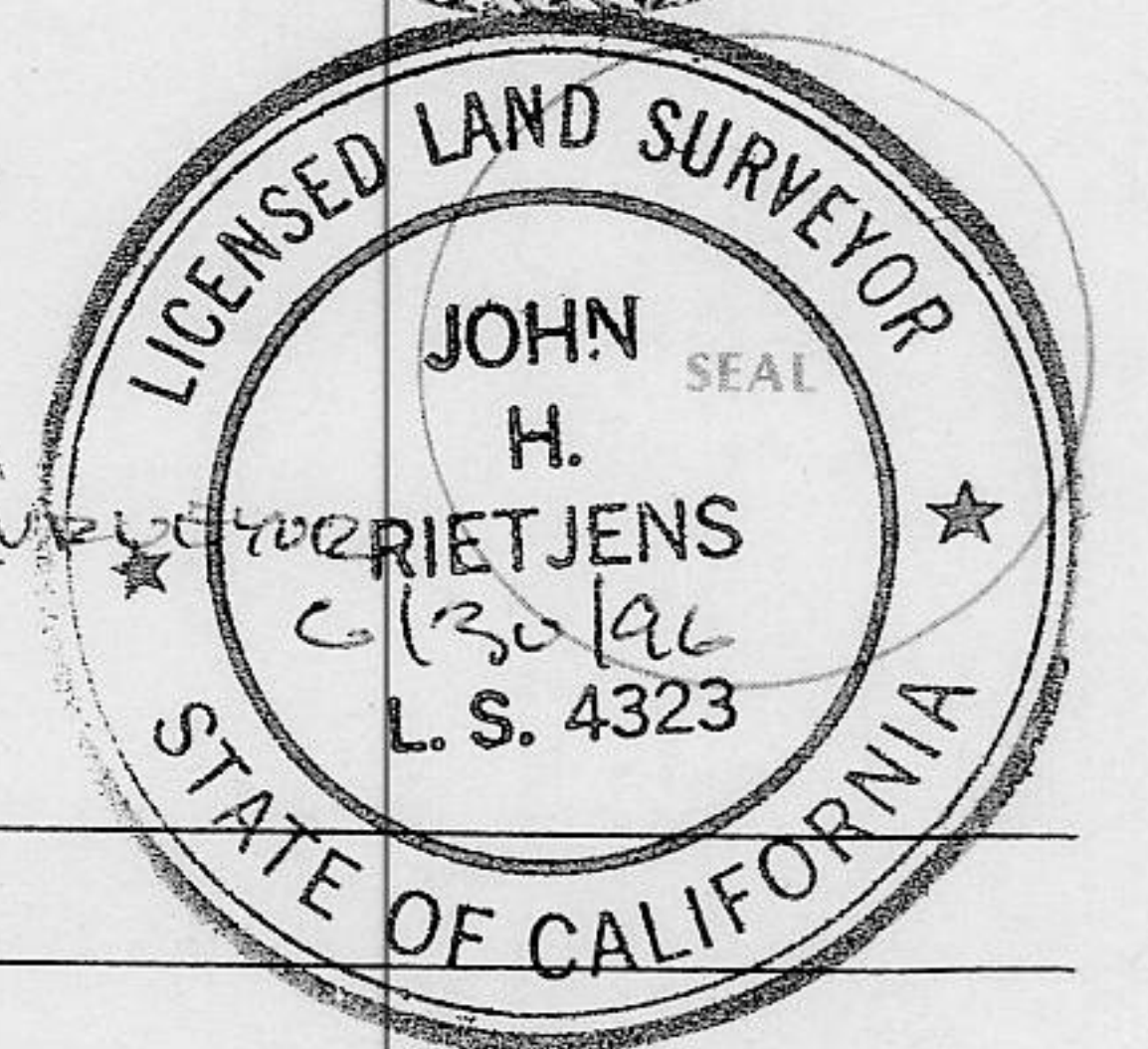
Signed Charles R. Sage Jr. L.S. or R.C.E. Number L.S. 5549
LIC. EXPIRES 6-30-97



COUNTY SURVEYOR'S STATEMENT

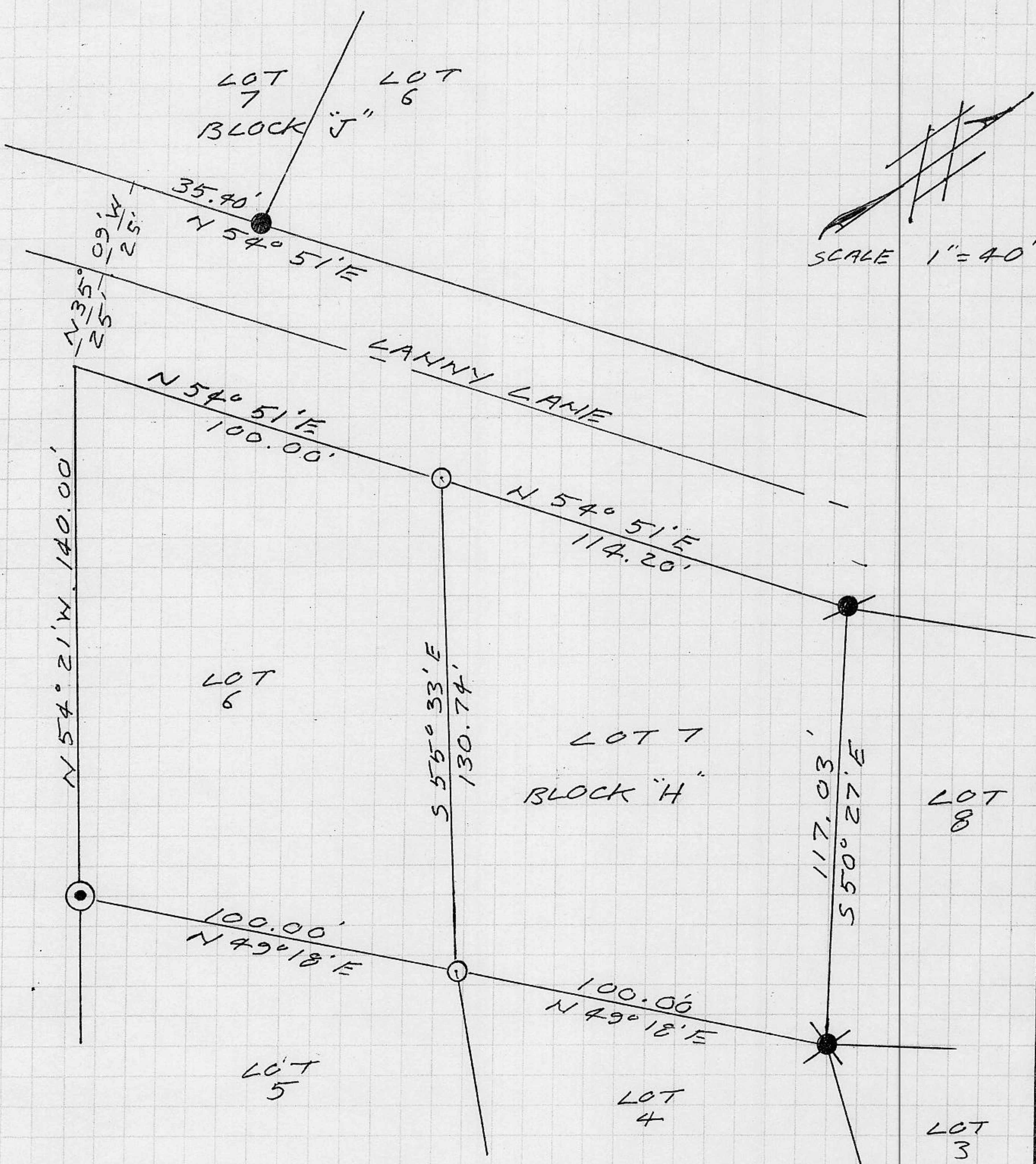
This Corner Record was received OCT 21 19 96 and examined and filed OCT 24 19 96.

Signed John H. Prietjens Title Deputy County Surveyor



County Surveyor's Comment _____

BOOK 5 CORNER RECORDS PAGE 52



NOTE: THE BEARINGS & DISTANCES SHOWN ARE RECORD PER "E" MAPS/82. NO MATERIAL DISCREPANCIES WITH RECORD INFORMATION WERE FOUND.