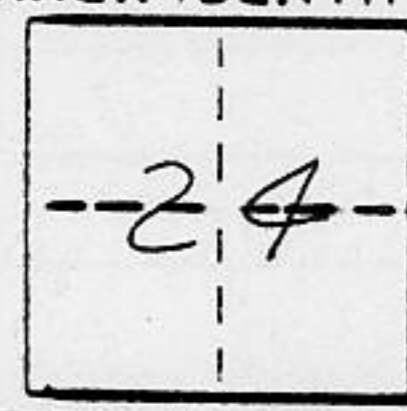


**CORNER RECORD**

COUNTY OF PLACER T. 15N R. 16E M.D.B.E MERIDIAN CALIFORNIA  
 CORNER TYPE: GOV'T. CORNER  MEANDER  RANCHO  CONTROL  OTHER   
 CORNER IDENTIFICATION - DATE OF VISIT OCT. 10, 1989



LOT 43 & 44, PINELAND SUB'D, NO. 2, BOOK 7, SURVEYS 107

CORNER - LEFT AS FOUND  FOUND AND TAGGED  REESTABLISHED  OBLITERATED CORNER  REBUILT

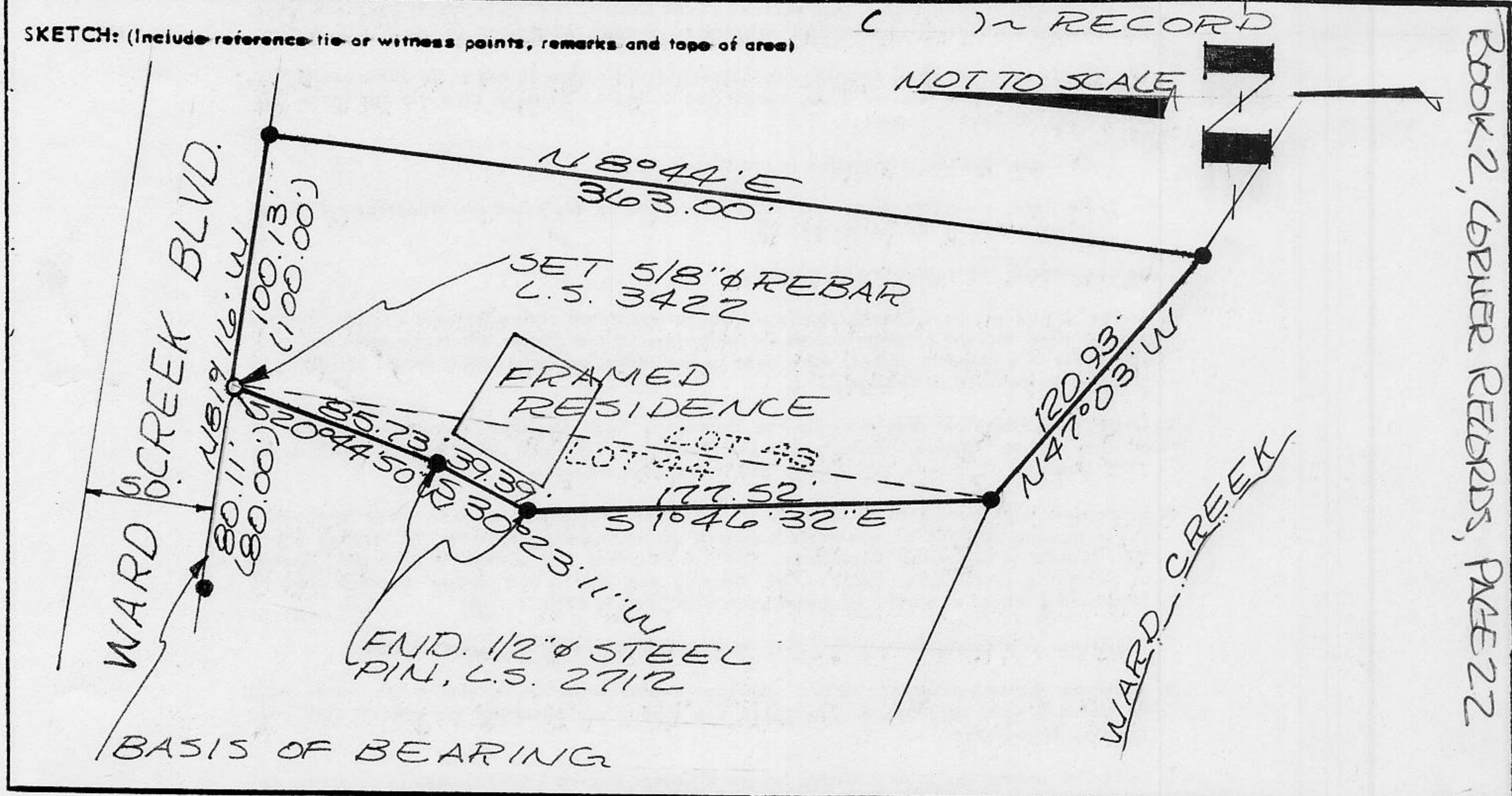
PHYSICAL DESCRIPTION OF CORNER FOUND: EVIDENCE AND METHOD USED TO IDENTIFY OR REESTABLISH

~ FOUND 1/2" Ø STEEL PIN, R.C.E. 847, UNLESS OTHERWISE INDICATED.

PHYSICAL DESCRIPTION OF MONUMENTS REBUILT OR PERPETUATED

~ SET 5/8" Ø REBAR WITH YELLOW PLASTIC CAP, STAMPED L.S. 3422, UNLESS OTHERWISE INDICATED.

CALIFORNIA COORDINATE SYSTEM ORDER: FIRST  SECOND  THIRD  N/A  
 STATIONS USED: NGS (USC & GS)  STATE  COUNTY  OTHER  STATION \_\_\_\_\_ STATION \_\_\_\_\_  
 ZONE \_\_\_\_\_ ELEVATION \_\_\_\_\_ NORTHINGS (Y) \_\_\_\_\_ EASTINGS (X) \_\_\_\_\_



BOOK 2, COMPUTER RECORDS, PAGE 22

**SURVEYOR'S CERTIFICATE**

THIS CORNER RECORD WAS PREPARED BY ME OR UNDER MY DIRECTION IN CONFORMANCE WITH THE LAND SURVEYORS ACT ON NOV 30 1989  
 SIGNED: Jerry W. Tippin  
 L.S. or R.C.E. No.: L.S. 3422



**COUNTY SURVEYOR'S CERTIFICATE**

THIS CORNER RECORD WAS RECEIVED 12/1 1989 AND EXAMINED AND FILED 12/4 1989  
 BY: John R. [Signature]  
 TITLE: DEPUTY COUNTY SURVEYOR  
 DOCUMENT No. \_\_\_\_\_  
 STATEMENT ON BACK OF SHEET J.N. 443.00 ES  NO