

CORNER RECORD

COUNTY OF PLACER T. 18N R. 17E M.D. MERIDIAN CALIFORNIA

CORNER TYPE: GOV'T. CORNER MEANDER RANCHO CONTROL OTHER
 CORNER IDENTIFICATION - DATE OF VISIT 9-22 1989



LOT 20, HIGHLANDS NO. 2, BOOK F MAPS 63

CORNER - LEFT AS FOUND FOUND AND TAGGED REESTABLISHED OBLITERATED CORNER REBUILT

PHYSICAL DESCRIPTION OF CORNER FOUND: EVIDENCE AND METHOD USED TO IDENTIFY OR REESTABLISH

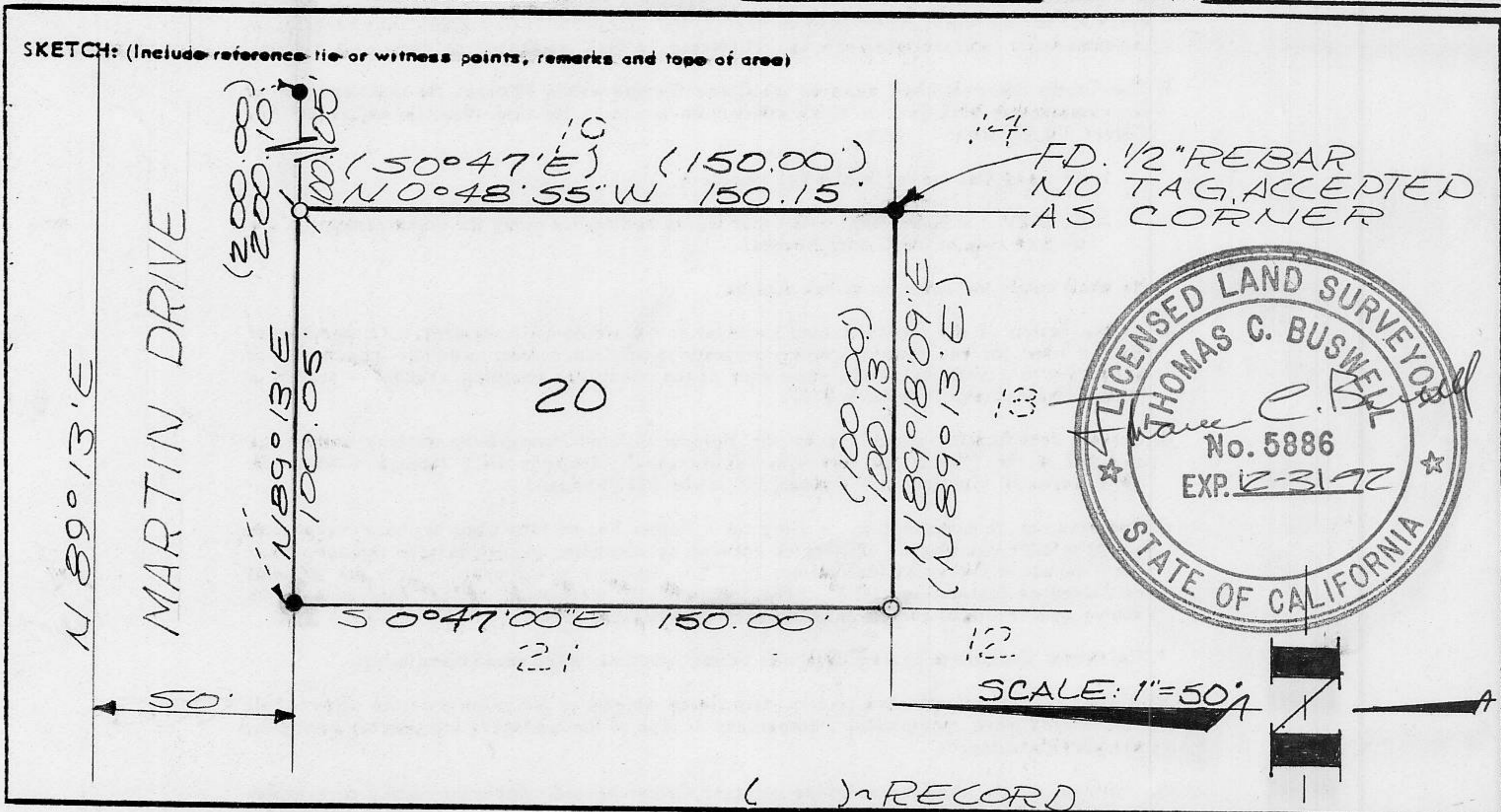
● FOUND 1/2" REBAR AS PER F MAPS 63

PHYSICAL DESCRIPTION OF MONUMENTS REBUILT OR PERPETUATED

QV SET 5/8" REBAR WITH YELLOW PLASTIC CAP, L.S. 5886

CALIFORNIA COORDINATE SYSTEM ORDER: FIRST SECOND THIRD N/A
 STATIONS USED: NGS (USC & GS) STATE COUNTY OTHER STATION _____ STATION _____
 ZONE _____ ELEVATION _____ NORTHINGS (Y) _____ EASTINGS (X) _____

SKETCH: (Include reference tie or witness points, remarks and type of area)



SURVEYOR'S CERTIFICATE

THIS CORNER RECORD WAS PREPARED BY ME OR UNDER MY DIRECTION IN CONFORMANCE WITH THE LAND SURVEYORS ACT ON 11-30 1989

SIGNED: Thomas C. Buswell

L.S. or R.C.E. No.: L.S. 5886

SEAL

COUNTY SURVEYOR'S CERTIFICATE

THIS CORNER RECORD WAS RECEIVED 12/1 1989 AND EXAMINED AND FILED 12/4 1989

BY: John R. Greas
 TITLE: DEPUTY COUNTY SURVEYOR

DOCUMENT No. _____

STATEMENT ON BACK OF SHEET

IN 438.00 YES NO

BOOK 2 CORNER RECORDS PAGE 23