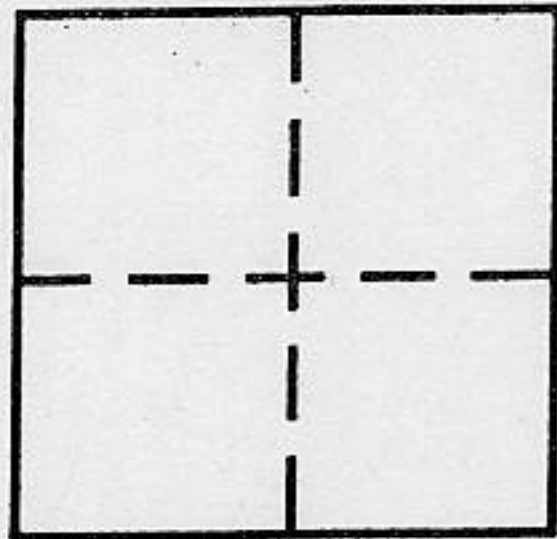


CORNER RECORD

COUNTY OF PLACER, CALIFORNIA

City of \_\_\_\_\_ Document Number \_\_\_\_\_

Brief Legal Description PARCEL "C" 9 PM 28



SEC 12  
T. 13 N.  
R. 9 E.

CORNER TYPE

Government Corner  Control   
Meander  Property   
Rancho  Other   
Date of Survey 7/17-7/22, 1996

COORDINATES (Optional)

N. \_\_\_\_\_  
E. \_\_\_\_\_  
Zone \_\_\_\_\_ Datum \_\_\_\_\_  
Elev. \_\_\_\_\_

Corner — Left as found  Found and tagged  Established  Reestablished  Rebuilt

Identification and type of corner found: Evidence used to identify or procedure used to establish or reestablish corner:

NW cor & SW cor of Parcel C, 9/PM/28

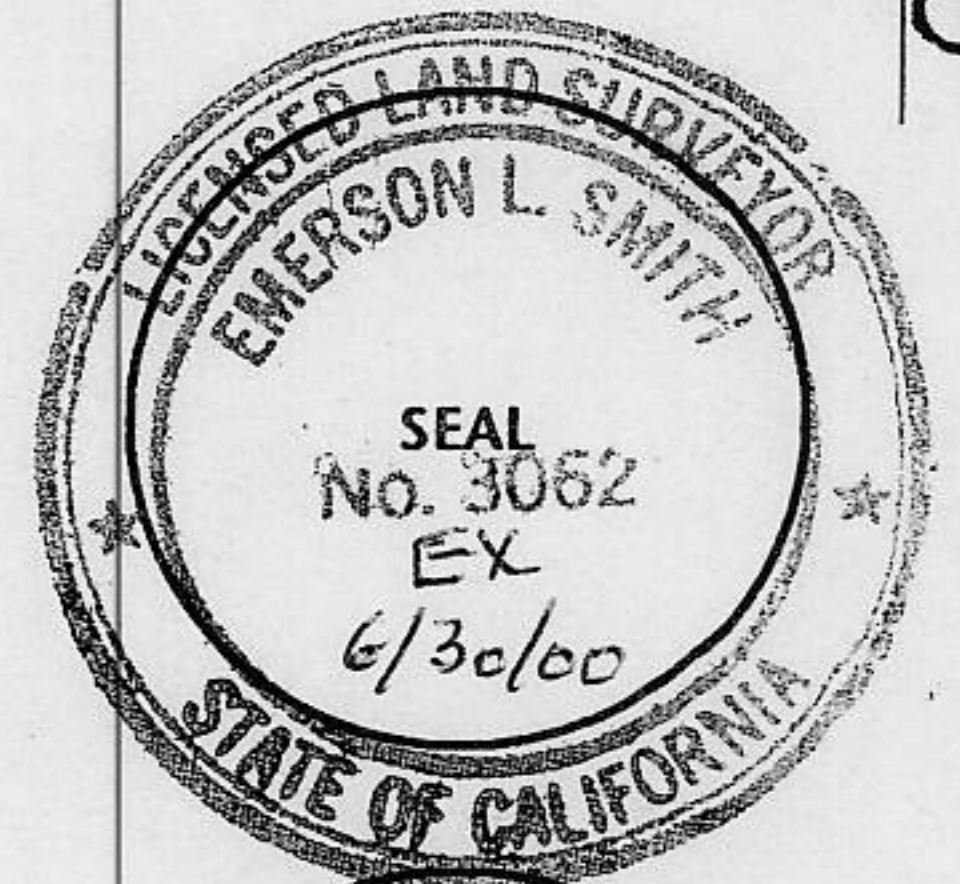
A description of the physical condition of the monument as found and as set or reset: See Map

SURVEYOR'S STATEMENT

This Corner Record was prepared by me or under my direction in conformance with the Land

Surveyors' Act on 8/5/96 19 \_\_\_\_.

Signed Emerson Smith L.S. or R.C.E. Number LS 3062

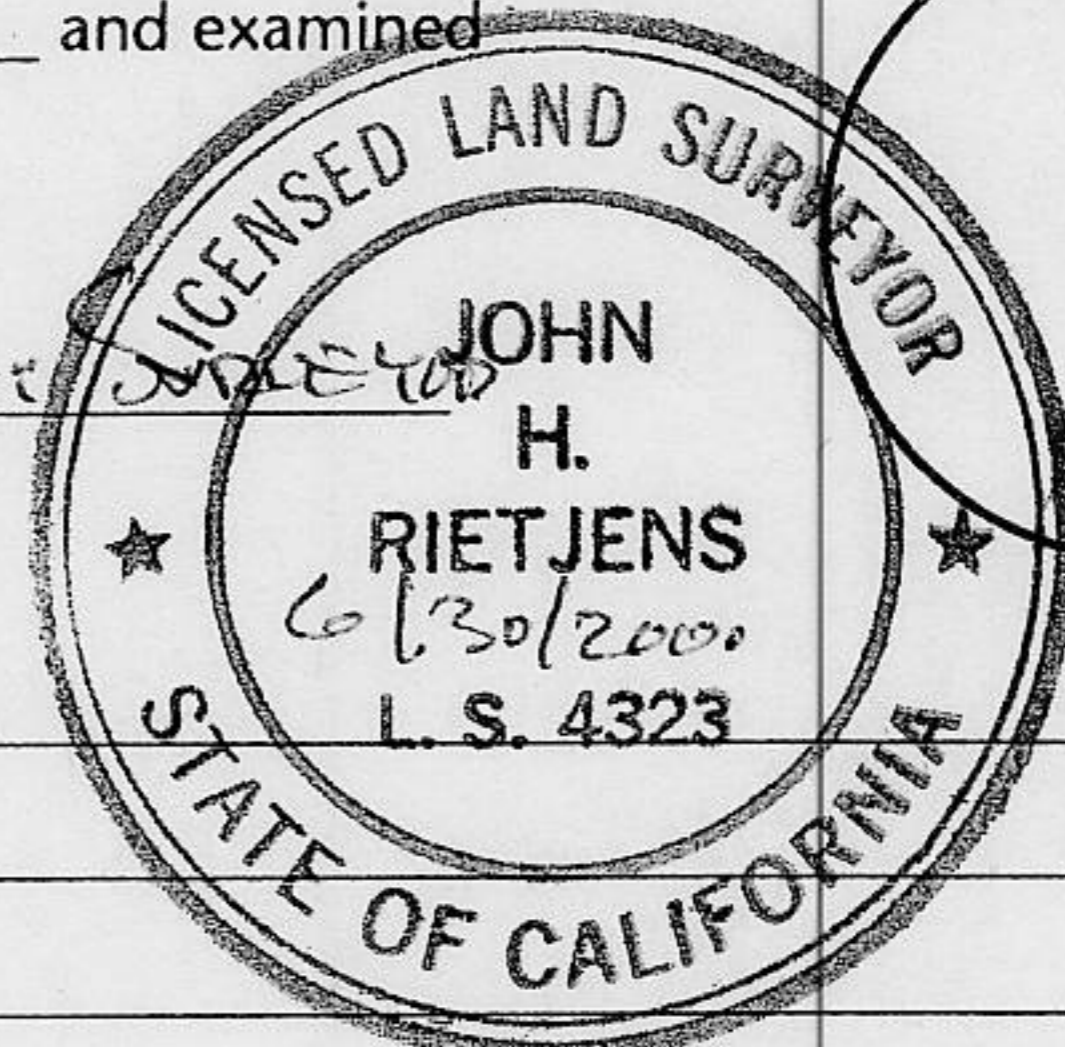


COUNTY SURVEYOR'S STATEMENT

This Corner Record was received OCTOBER 4 19 96 and examined

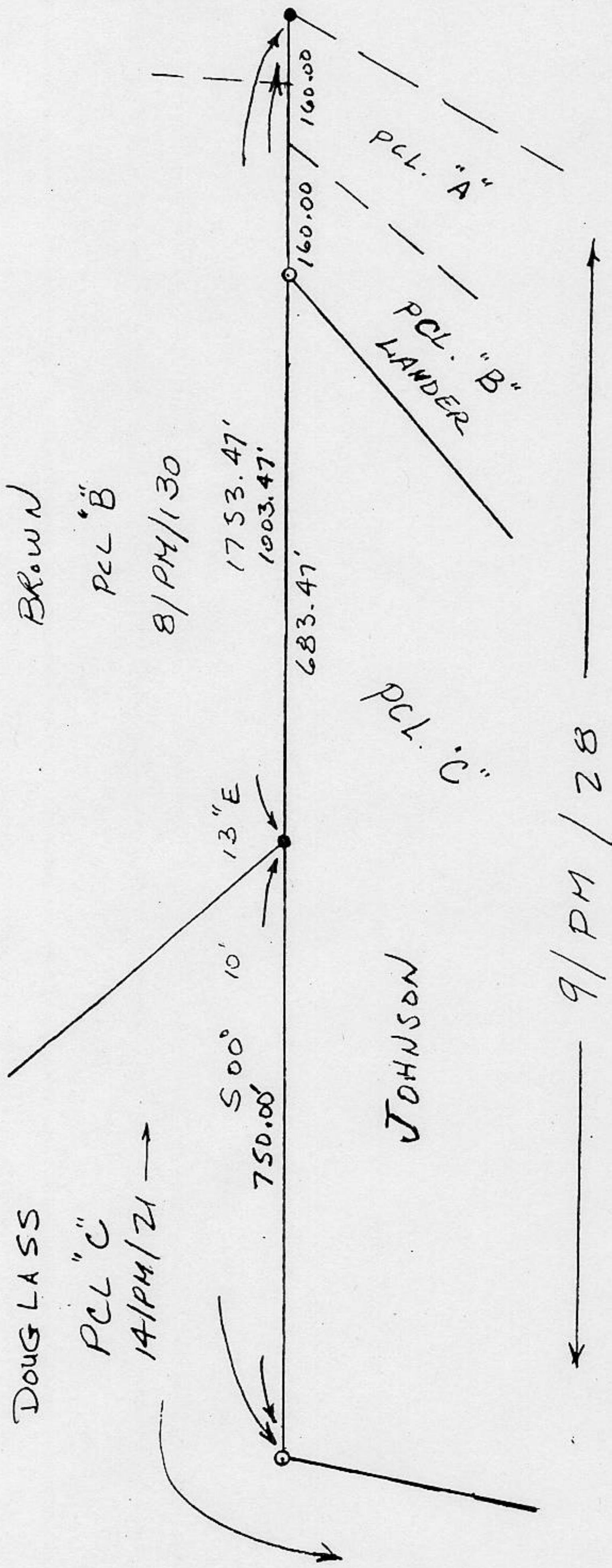
and filed OCT 15 19 96.

Signed John H. Rietjens Title Deputy County Surveyor



County Surveyor's Comment \_\_\_\_\_

BOOK 5 CORNER RECORDS PAGE 50



1" = 200'

MAP SHOWING A PORTION OF THE NE 1/4 OF SECTION 12,  
T.13N., R.9E., MDM, AND A PORTION OF 9/PM/28 SURVEYED  
FOR KEVIN JOHNSON.

SCALE: 1" = 200'

JULY 1996

EMERSON L. SMITH  
LS 3062

- = Found 5/8 REBAR  
RCE 9093
- = SET 3/4" REBAR WITH PLASTIC CAPS MK'd LS 3062