

PREPARED FOR:  
 County Of Placer  
 c/o Joel Swift - AIA

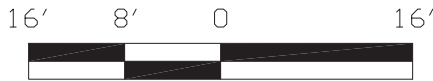
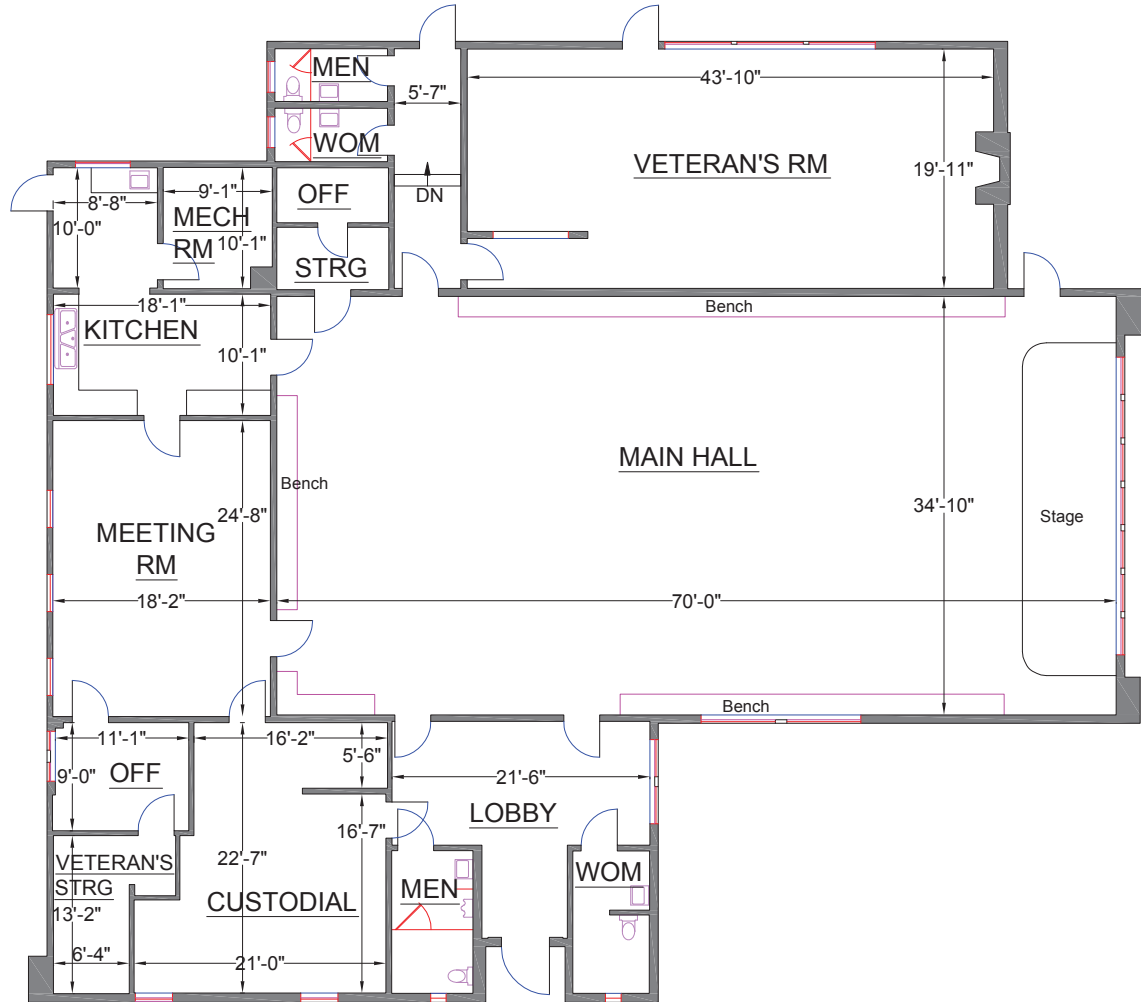
# LOOMIS VETERANS MEMORIAL HALL 5945 HORSESHOE BAR ROAD LOOMIS, CA

(As Measured: November 2012)

## FLOOR PLAN



LIBRARY ROAD



SCALE: 1/16" = 1' - 0"

### HORSESHOE BAR

**Note:** All dimensions shown are rounded to the nearest inch, for informational purposes only. All measurements are recorded to 1/8" accuracy as documented in the final CAD drawing supplied.



Corporate Design Group, Inc.  
 TEL: (916) 781-6543  
 FILE: L120918 (12-383)

LASERTECH® is a registered US trademark of Lasertech® Floorplans Ltd.  
 Copyright 1998-2012 Lasertech® Floorplans Ltd., All Rights Reserved

Survey Accuracy: +/- 0.10 %