

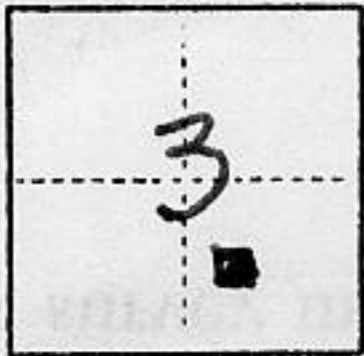
(For County Use Only)

CORNER RECORD

COUNTY OF PLACER T. 10N R. 7E M.D. MERIDIAN CALIFORNIA

CORNER TYPE: GOV'T. CORNER MEANDER RANCHO CONTROL OTHER

CORNER IDENTIFICATION — DATE OF VISIT NOV 30 19 89



CORNER — LEFT AS FOUND FOUND AND TAGGED REESTABLISHED OBLITERATED CORNER REBUILT

PHYSICAL DESCRIPTION OF CORNER FOUND; EVIDENCE AND METHOD USED TO IDENTIFY OR REESTABLISH

ALL CORNERS OF PARCEL MISSING

● CORNERS FOUND PER 7 RS 158

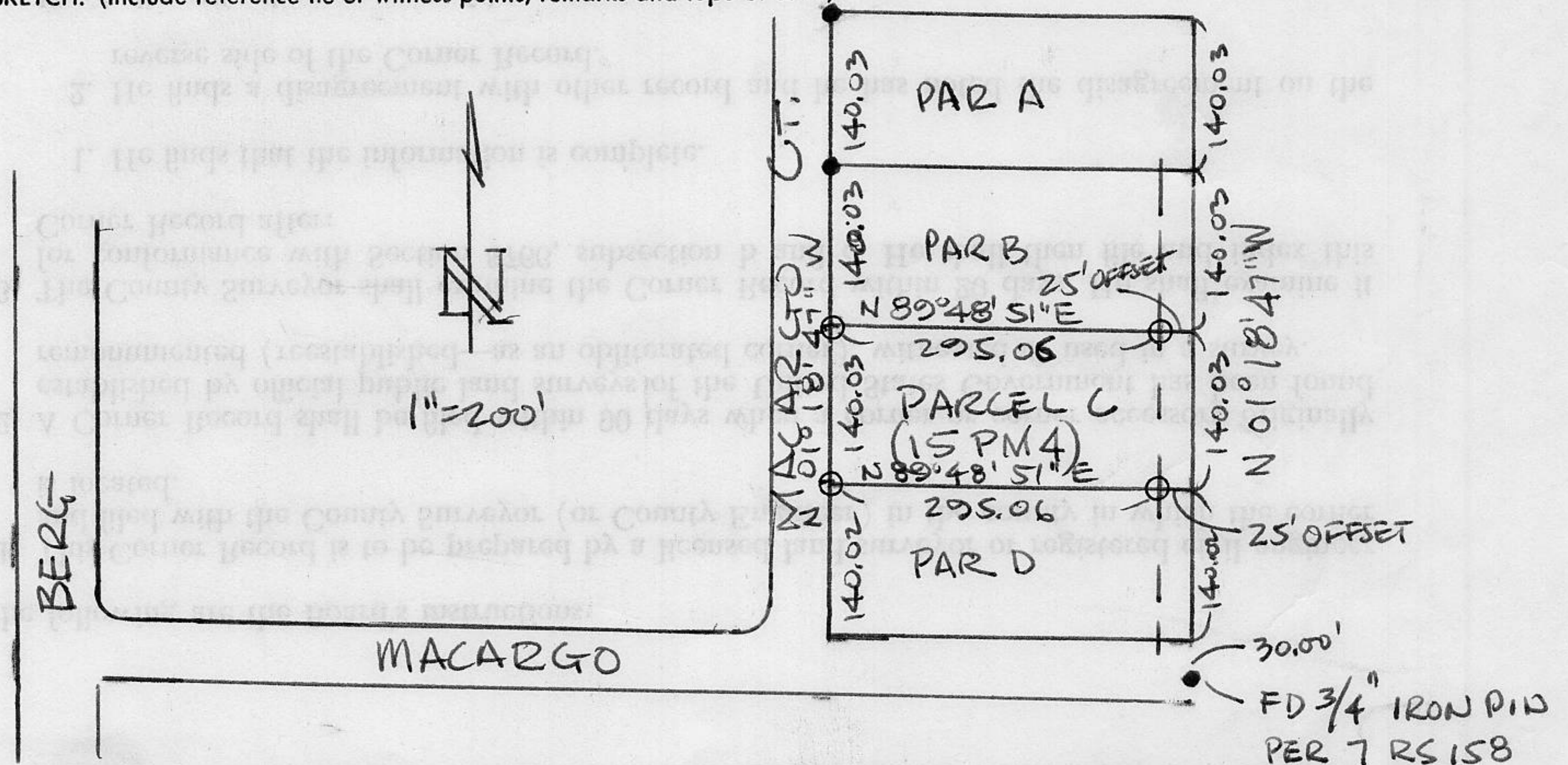
PHYSICAL DESCRIPTION OF MONUMENTS REBUILT OR PERPETUATED

⊕ INDICATES 5/8" REBAR SET AT FRONT & 25' FROM BACK COR. TAGGED WITH RCE 13845

CALIFORNIA COORDINATE SYSTEM ORDER: FIRST SECOND THIRD
STATIONS USED: NGS (USC & GS) STATE COUNTY OTHER STATION _____ STATION _____
ZONE _____ ELEVATION _____ NORTHINGS (Y) _____ EASTINGS (X) _____

(Fold)

SKETCH: (Include reference tie or witness points, remarks and topo of area)



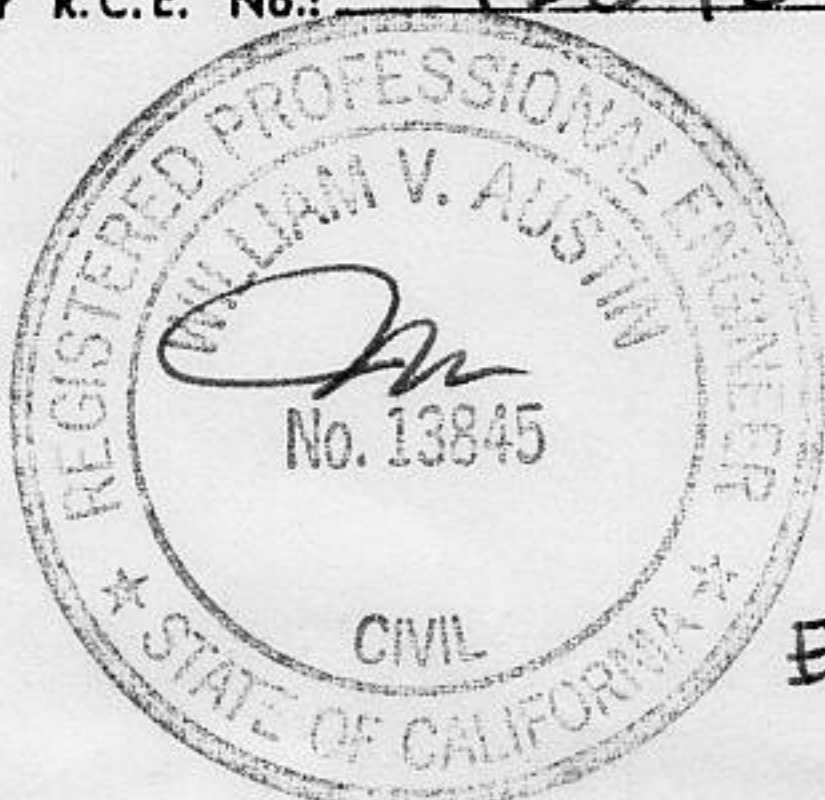
BOOK 2, CORNER RECORDS, PAGE 27

SURVEYOR'S CERTIFICATE

THIS CORNER RECORD WAS PREPARED BY ME OR UNDER MY DIRECTION IN CONFORMANCE WITH THE LAND SURVEYORS ACT ON DEC 1 19 89.

SIGNED: [Signature]

or R.C.E. No.: 13845



SEAL

EXP 3/31/93

COUNTY SURVEYOR'S CERTIFICATE

THE CORNER RECORD WAS RECEIVED 12/12 19 89 AND EXAMINED AND FILED 12/14 19 89.

BY: [Signature]

TITLE: DEPUTY COUNTY SURVEYOR

DOCUMENT No. _____

STATEMENT ON BACK OF SHEET

YES

NO