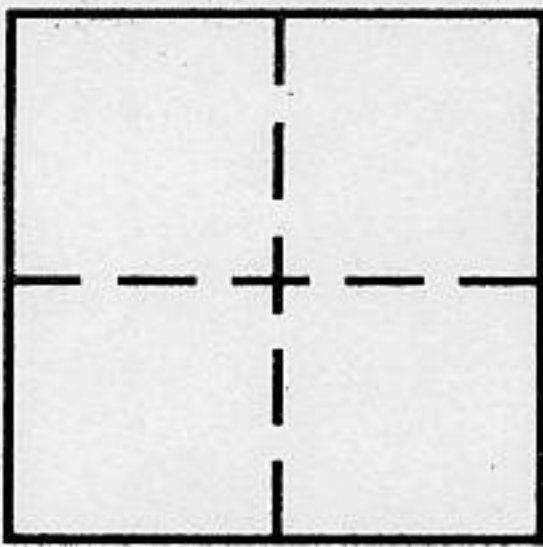


CORNER RECORD

COUNTY OF PLACER, CALIFORNIA

City of _____ Document Number _____

Brief Legal Description _____



SEC 15
T 16 N
R 11 E

CORNER TYPE

- Government Corner
- Meander
- Rancho
- Date of Survey 6/29 - 7/5, 1996
- Control
- Property
- Other

COORDINATES (Optional)

N. _____
E. _____
Zone _____ Datum _____
Elev. _____

Corner — Left as found Found and tagged Established Reestablished Rebuilt

Identification and type of corner found: Evidence used to identify or procedure used to establish or reestablish corner:

Easterly corner between Parcels A & B of 15/PM/57

AND

Easterly corner between Parcels D of 15/PM/57 and A of 17/PM/64

A description of the physical condition of the monument as found and as set or reset: See Map

SURVEYOR'S STATEMENT

This Corner Record was prepared by me or under my direction in conformance with the Land

Surveyors' Act on 7/5/96 19 ____.

Signed Emerson L Smith L.S. or R.C.E. Number LS 3062

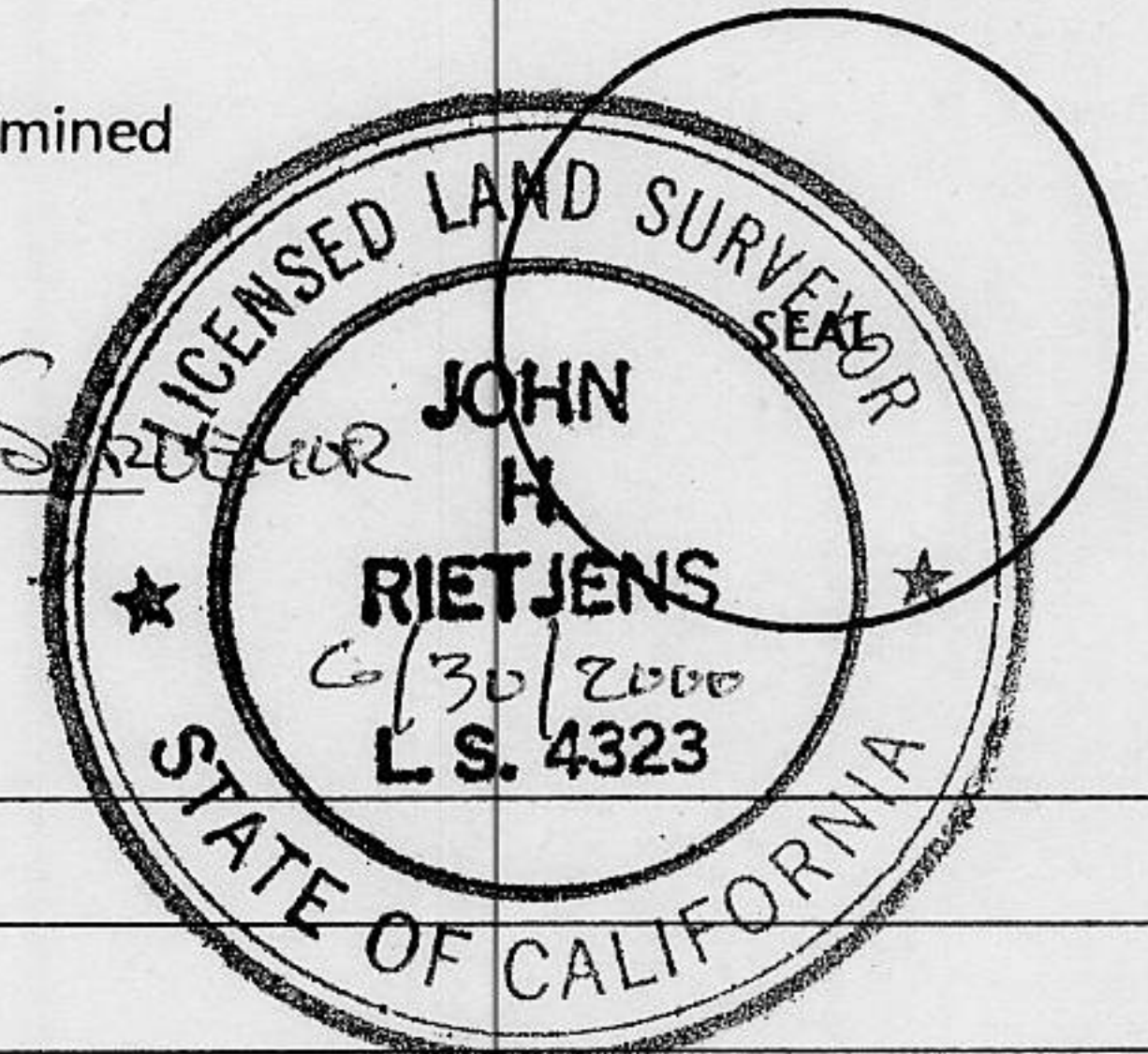


COUNTY SURVEYOR'S STATEMENT

This Corner Record was received JULY 10 19 96 and examined

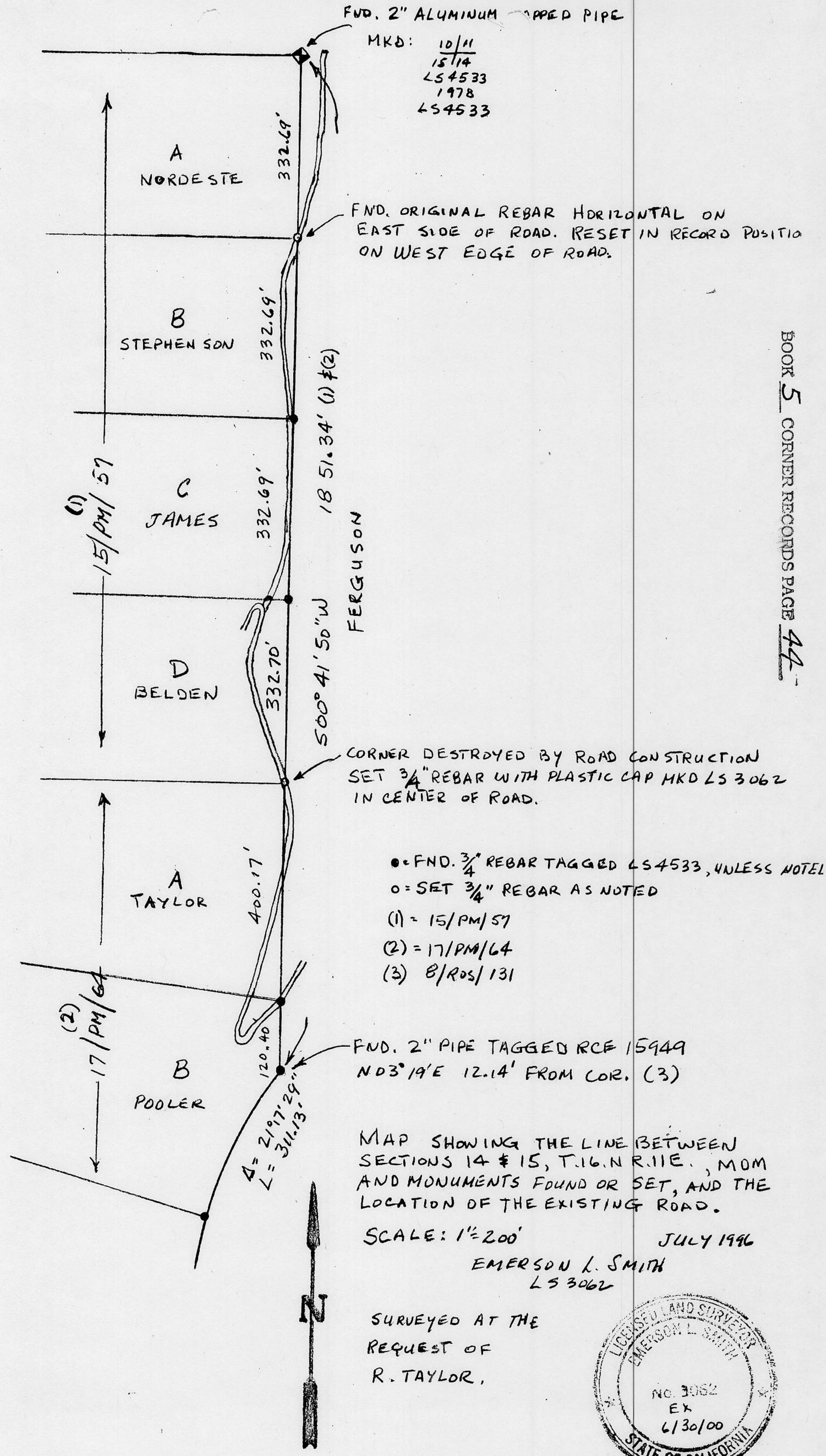
and filed JULY 26 1996.

Signed John H. Rietsjens Title Deputy County Surveyor



County Surveyor's Comment _____

BOOK 5 CORNER RECORDS PAGE 44



FND. 2" ALUMINUM TAPPED PIPE

MKD: 10/11
 15/14
 LS 4533
 1978
 LS 4533

FND. ORIGINAL REBAR HORIZONTAL ON EAST SIDE OF ROAD. RESET IN RECORD POSITION ON WEST EDGE OF ROAD.

FERGUSON

CORNER DESTROYED BY ROAD CONSTRUCTION SET 3/4" REBAR WITH PLASTIC CAP MKD LS 3062 IN CENTER OF ROAD.

- = FND. 3/4" REBAR TAGGED LS 4533, UNLESS NOTED
- = SET 3/4" REBAR AS NOTED
- (1) = 15/PM/57
- (2) = 17/PM/64
- (3) = 8/ROS/131

FND. 2" PIPE TAGGED RCF 15949 N03°19'E 12.14' FROM COR. (3)

MAP SHOWING THE LINE BETWEEN SECTIONS 14 & 15, T.16.N R.11E., MOM AND MONUMENTS FOUND OR SET, AND THE LOCATION OF THE EXISTING ROAD.

SCALE: 1" = 200'

JULY 1996

EMERSON L. SMITH
 LS 3062

SURVEYED AT THE REQUEST OF R. TAYLOR,

