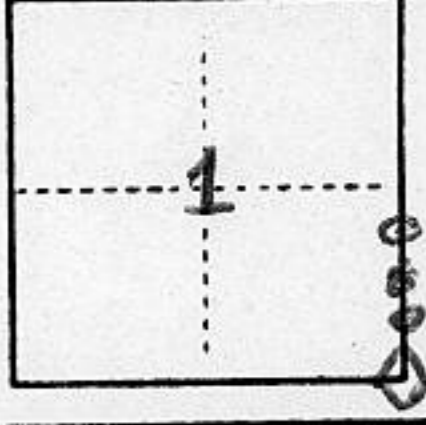


(For County Use Only)

CORNER RECORD

COUNTY OF PLACER T. 13N R. 7E MDM MERIDIAN CALIFORNIA

CORNER TYPE: GOV'T. CORNER MEANDER RANCHO CONTROL OTHER
CORNER IDENTIFICATION — DATE OF VISIT _____ 19____



BOOK 0 OF MAPS, Pg. 5.

CORNER — LEFT AS FOUND FOUND AND TAGGED REESTABLISHED OBLITERATED CORNER REBUILT

PHYSICAL DESCRIPTION OF CORNER FOUND; EVIDENCE AND METHOD USED TO IDENTIFY OR REESTABLISH
SEE SKETCH

PHYSICAL DESCRIPTION OF MONUMENTS REBUILT OR PERPETUATED
SEE SKETCH

CALIFORNIA COORDINATE SYSTEM ORDER: FIRST SECOND THIRD
STATIONS USED: NGS (USC & GS) STATE COUNTY OTHER STATION _____ STATION _____
ZONE _____ ELEVATION _____ NORTHINGS (Y) _____ EASTINGS (X) _____

(Fold)

SKETCH: (Include reference tie or witness points, remarks and topo of area)
SEE SKETCH

SURVEYOR'S CERTIFICATE

THIS CORNER RECORD WAS PREPARED BY ME OR UNDER MY DIRECTION IN CONFORMANCE WITH THE LAND SURVEYORS ACT ON MAY 27 1990

SIGNED: Emerson Smith

L.S. or R.C.E. No.: LS 3062



SEAL

COUNTY SURVEYOR'S CERTIFICATE

THE CORNER RECORD WAS RECEIVED 5/29 1990 AND EXAMINED AND FILED CS 1990

BY: John R. Stephens
TITLE: DEPUTY COUNTY SURVEYOR

DOCUMENT No. _____

STATEMENT ON BACK OF SHEET

YES NO

Book 2, Corner Records, Page 34

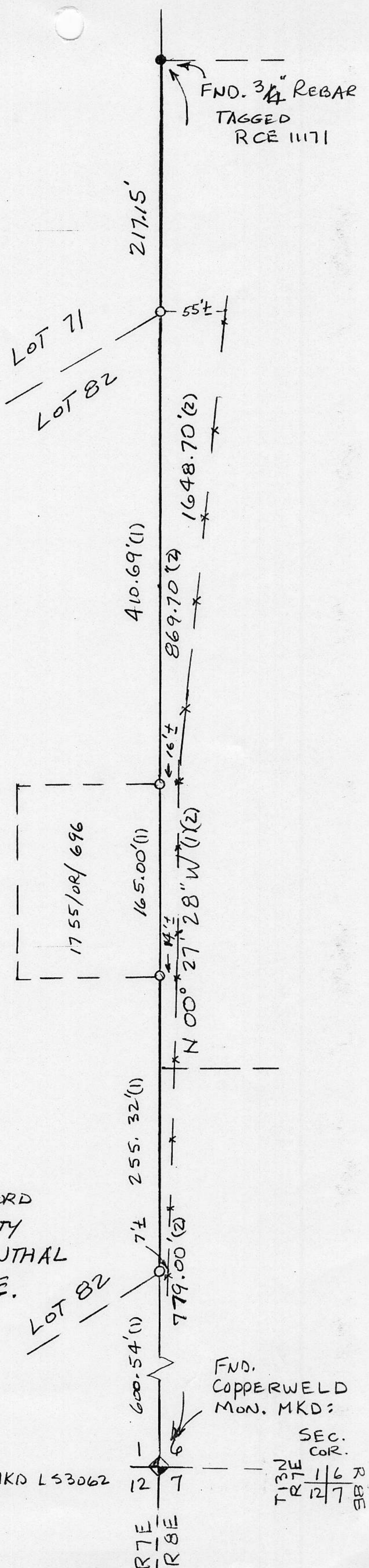


SKETCH TO ACCOMPANY CORNER RECORD
 TO BE FILED WITH THE PLACER COUNTY
 SURVEYOR, AT THE REQUEST OF L. ODENTHAL
 A PORTION OF SEC. 1, T. 13N. R. 7E.

ORIGINALLY FILED IN BOOK O OF
 MAPS AT PAGE 5.

EMERSON L. SMITH - LS 3062
 MAY, 1990.

o = SET 3/4" REBAR WITH PLASTIC CAP MKD LS3062
 (1) = O/MAPS/5
 (2) = 23/PM/2



FND. 3/4" REBAR
 TAGGED
 RCE 11171

LOT 71
 LOT 82

1755/or/696

FND.
 COPPERWELD
 MON. MKD:

SEC.
 COR.
 T13N
 R7E 1/6
 12/7
 R3E

