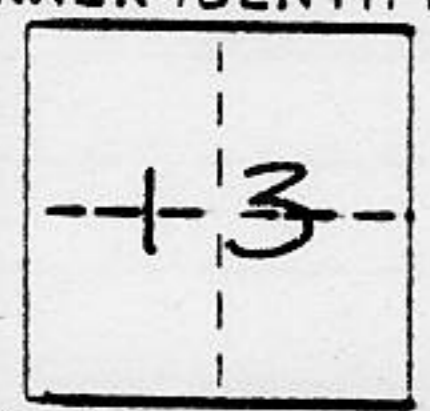


CORNER RECORD

COUNTY OF PLACER T. 15N R. 16E MP MERIDIAN CALIFORNIA
 CORNER TYPE: GOV'T. CORNER MEANDER RANCHO CONTROL OTHER
 CORNER IDENTIFICATION - DATE OF VISIT S-4 19 90



LOTS 98 & 99, TALMONT ESTATES UNIT NO. 1, H MAPS 9

CORNER - LEFT AS FOUND FOUND AND TAGGED REESTABLISHED OBLITERATED CORNER REBUILT

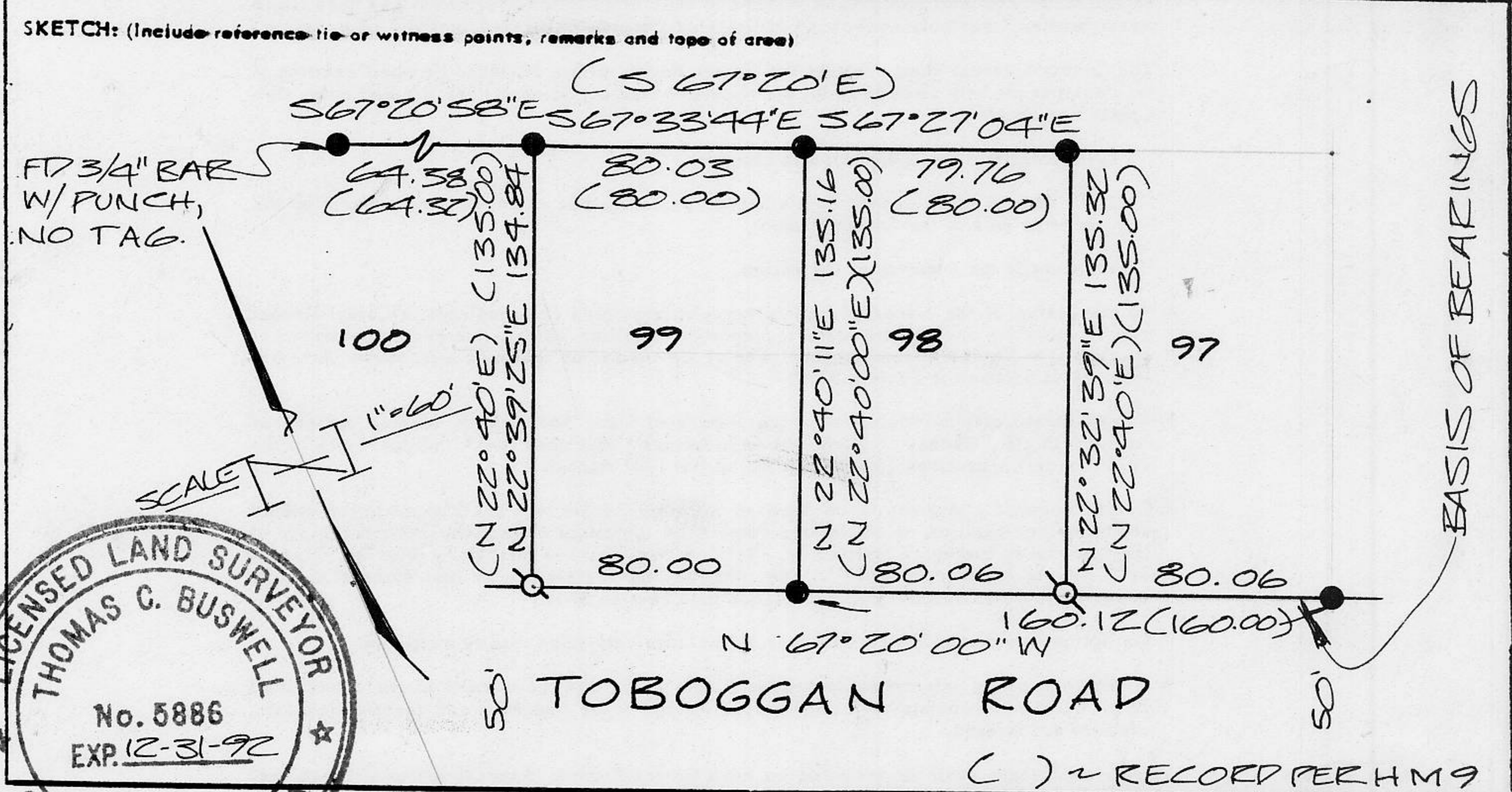
PHYSICAL DESCRIPTION OF CORNER FOUND: EVIDENCE AND METHOD USED TO IDENTIFY OR REESTABLISH _____

● FOUND MONUMENT AS INDICATED. 1/2" REBAR W/ PUNCH, NO TAG, UNLESS OTHERWISE INDICATED.

PHYSICAL DESCRIPTION OF MONUMENTS REBUILT OR PERPETUATED _____

Q~ SET 5/8" REBAR WITH YELLOW PLASTIC CAP LS 5886

CALIFORNIA COORDINATE SYSTEM ORDER: FIRST SECOND THIRD N/A
 STATIONS USED: NGS (USC & GS) STATE COUNTY OTHER STATION _____ STATION _____
 ZONE _____ ELEVATION _____ NORTHINGS (Y) _____ EASTINGS (X) _____



SURVEYOR'S CERTIFICATE
 THIS CORNER RECORD WAS PREPARED BY ME OR UNDER MY DIRECTION IN CONFORMANCE WITH THE LAND SURVEYORS ACT ON 5-28 19 90
 SIGNED: Thomas C. Buswell
 L.S. or ~~REG.~~ No.: 5886

COUNTY SURVEYOR'S CERTIFICATE
 THIS CORNER RECORD WAS RECEIVED 6/15 19 90 AND EXAMINED AND FILED 6/18 19 90
 BY: John Ruppens
 TITLE: DEPUTY COUNTY SURVEYOR
 DOCUMENT No. _____
 STATEMENT ON BACK OF SHEET YES NO

BOOK 2, CORNER RECORDS, PAGE 35