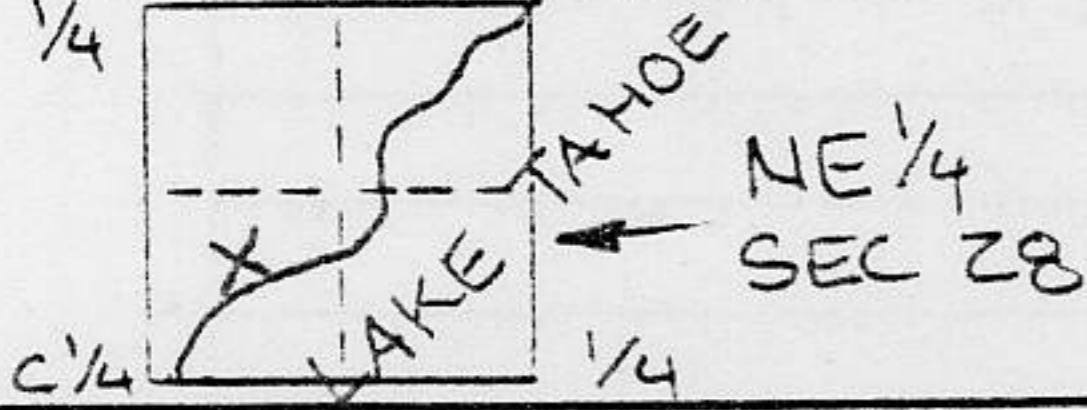


CORNER RECORD

COUNTY OF Placer T. 16 N R. 17 E MDM MERIDIAN CALIFORNIA

CORNER TYPE: GOV'T. CORNER MEANDER RANCHO CONTROL OTHER
 CORNER IDENTIFICATION - DATE OF VISIT June 1990



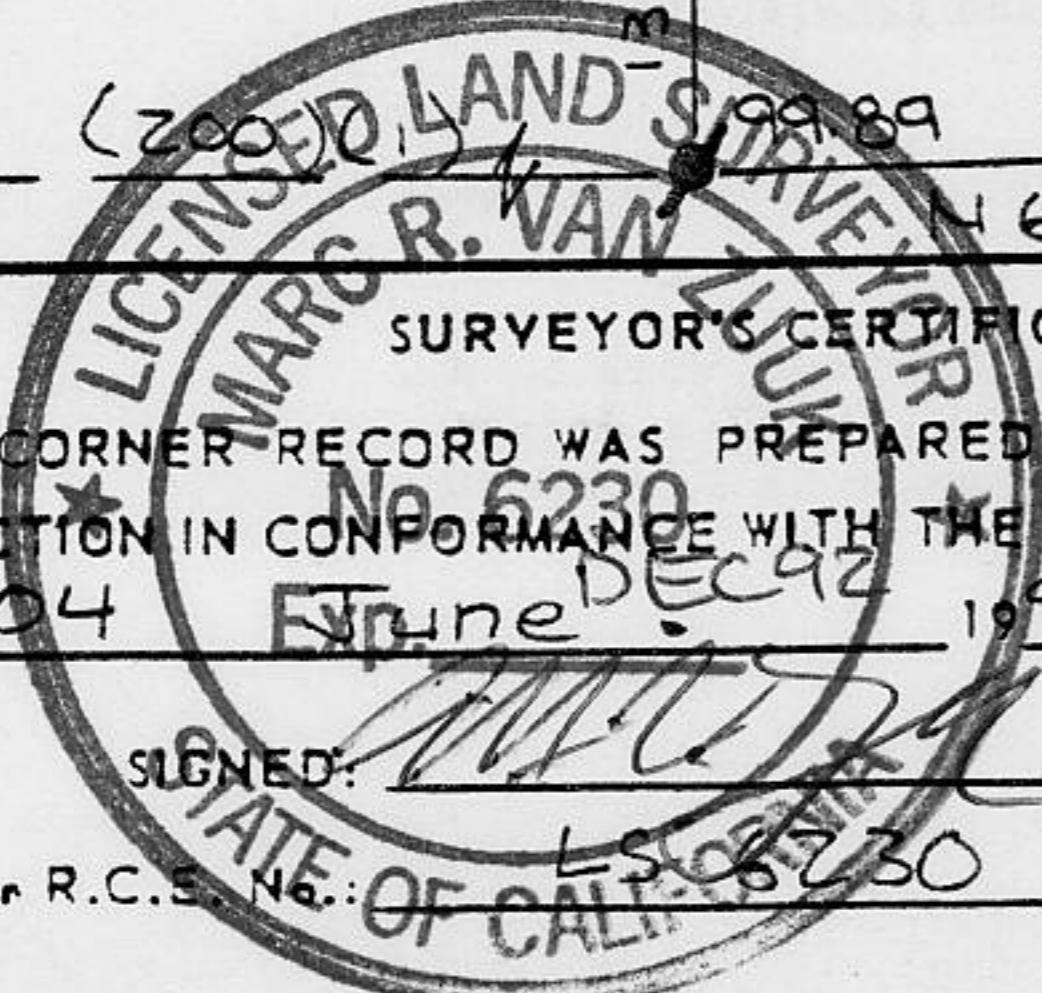
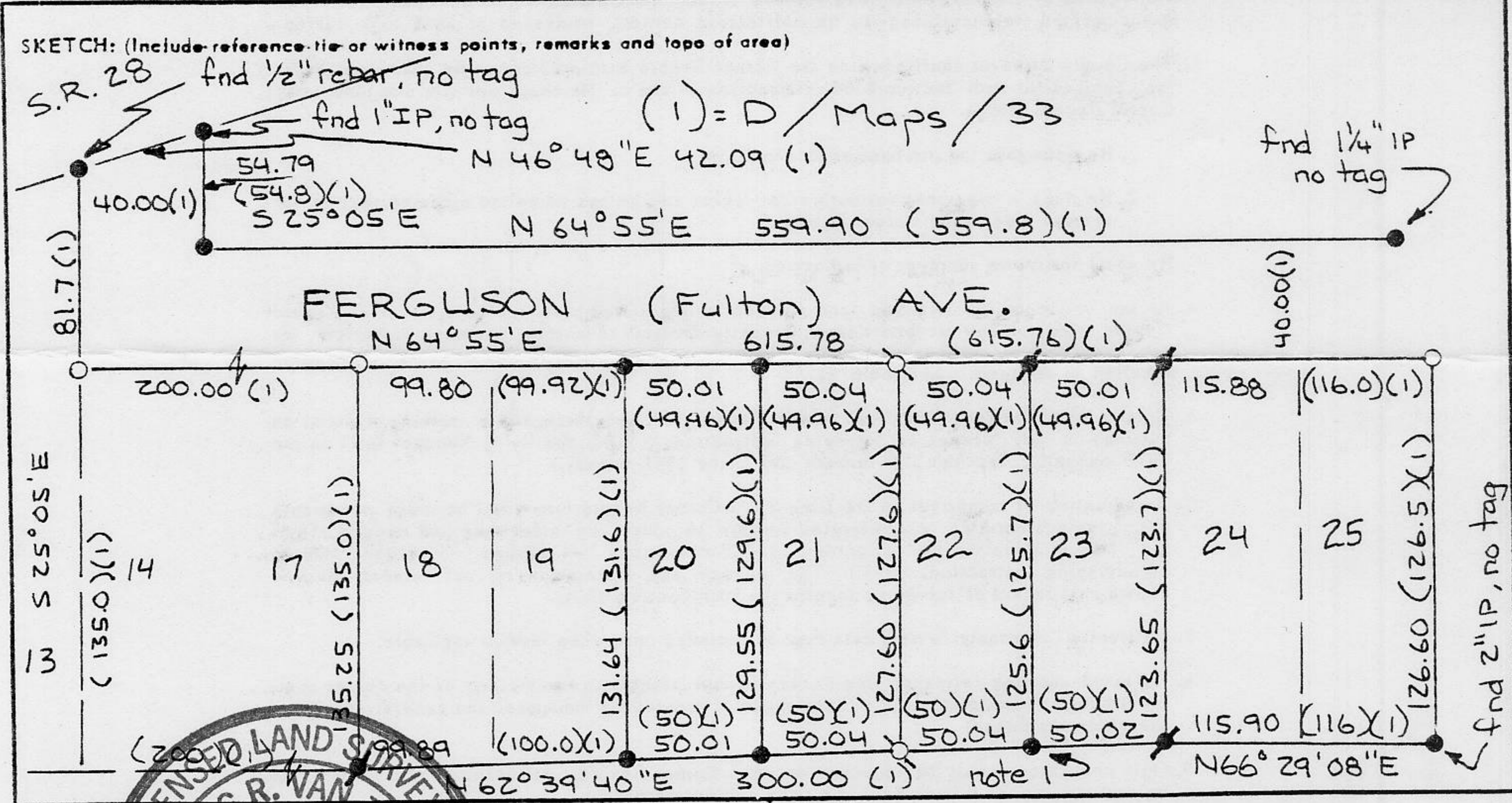
A Portion of Lake Forest Unit #2
D Maps 33

CORNERS LEFT AS FOUND FOUND AND TAGGED REESTABLISHED OBLITERATED CORNER REBUILT

PHYSICAL DESCRIPTION OF CORNER FOUND: EVIDENCE AND METHOD USED TO IDENTIFY OR REESTABLISH
 • found 5/8" rebar tagged LS 4914
 • found 5/8" rebar tagged LS 3422
 note 1: found plastic cap nailed to Aspen Tree. Tag is unreadable. tree is at corner position.
 other monuments found as noted below on sketch

PHYSICAL DESCRIPTION OF MONUMENTS REBUILT OR PERPETUATED
 Q set 5/8" rebar w/cap LS 6230
 O dimension point - nothing fnd or set

CALIFORNIA COORDINATE SYSTEM ORDER: FIRST SECOND THIRD
 STATIONS USED: NGS (USC & GS) STATE COUNTY OTHER STATION _____ STATION _____
 ZONE _____ ELEVATION _____ NORTHINGS (Y) _____ EASTINGS (X) _____



SURVEYOR'S CERTIFICATE
 THIS CORNER RECORD WAS PREPARED BY ME OR UNDER MY DIRECTION IN CONFORMANCE WITH THE LAND SURVEYORS ACT ON 04 June 1990
 SIGNED: _____
 L.S. or R.C.S. No. LS 6230
 SEAL

COUNTY SURVEYOR'S CERTIFICATE
 THIS CORNER RECORD WAS RECEIVED 6/26 1990
 AND EXAMINED AND FILED 7/3 1990
 BY: John Rupers
 TITLE: DEPUTY COUNTY SURVEYOR
 DOCUMENT No. _____
 STATEMENT ON BACK OF SHEET 1/4 488.00 YES NO

Book 2, Corner Records, Page 310