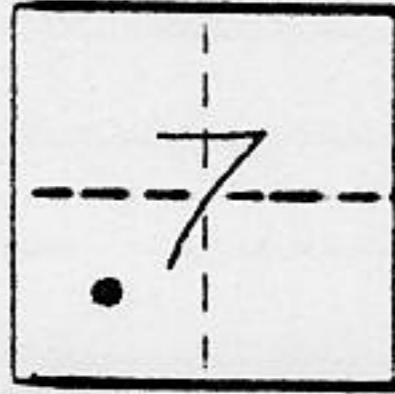


CORNER RECORD

COUNTY OF PLACER T. 14N R. 17E M.D.B. MERIDIAN CALIFORNIA

CORNER TYPE: GOV'T. CORNER MEANDER RANCHO CONTROL OTHER

CORNER IDENTIFICATION - DATE OF VISIT APRIL 17 1990



BOOK "G" PAGE 5
LOT NO. 122 CHAMBERLANDS SUBDIVISION UNIT "C"

CORNER - LEFT AS FOUND FOUND AND TAGGED REESTABLISHED OBLITERATED CORNER REBUILT

PHYSICAL DESCRIPTION OF CORNER FOUND: EVIDENCE AND METHOD USED TO IDENTIFY OR REESTABLISH

Ø SET 5/8" φ REBAR w/ YELLOW PLASTIC CAP STAMPED L.S. 3422

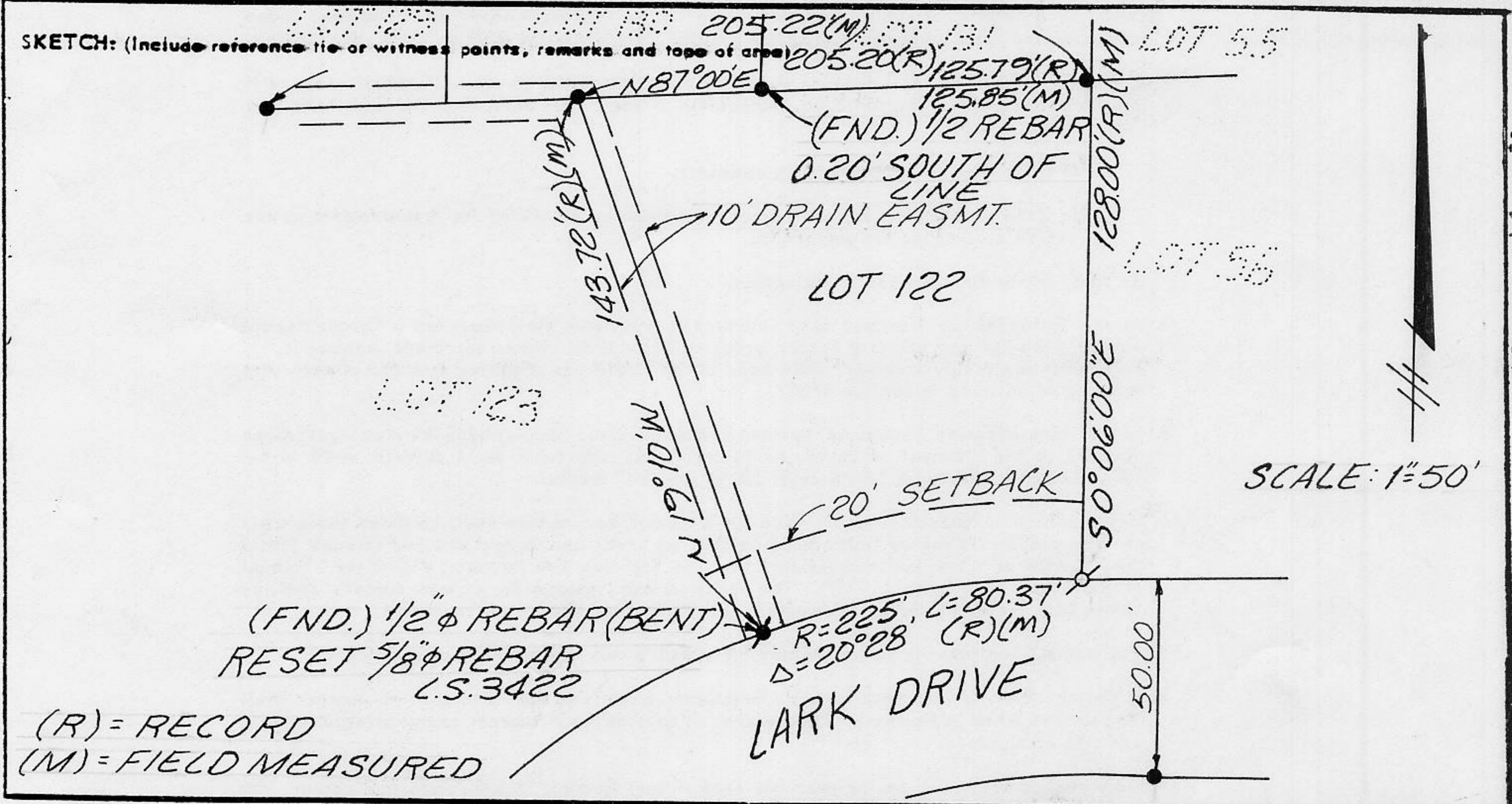
PHYSICAL DESCRIPTION OF MONUMENTS REBUILT OR PERPETUATED

● FOUND 1/2" φ REBAR NO TAG

CALIFORNIA COORDINATE SYSTEM ORDER: FIRST SECOND THIRD N/A

STATIONS USED: NGS (USC & GS) STATE COUNTY OTHER STATION _____ STATION _____

ZONE _____ ELEVATION _____ NORTHINGS (Y) _____ EASTINGS (X) _____

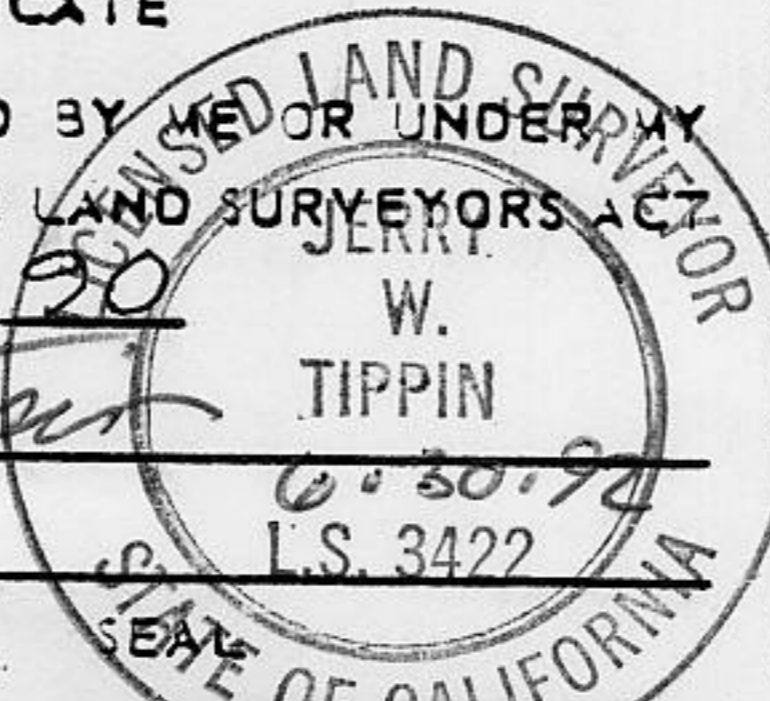


SURVEYOR'S CERTIFICATE

THIS CORNER RECORD WAS PREPARED BY ME OR UNDER MY DIRECTION IN CONFORMANCE WITH THE LAND SURVEYORS ACT ON APRIL 27 1990

SIGNED: [Signature]

L.S. or R.C.E. No. 3422



COUNTY SURVEYOR'S CERTIFICATE

THIS CORNER RECORD WAS RECEIVED 6/26 1990 AND EXAMINED AND FILED 7/3 1990

BY: [Signature]
TITLE: DEPUTY COUNTY SURVEYOR

DOCUMENT No. _____
STATEMENT ON BACK OF SHEET

YES NO

JN478.00

BOOK 2, CORNER RECORDS, PAGE 37