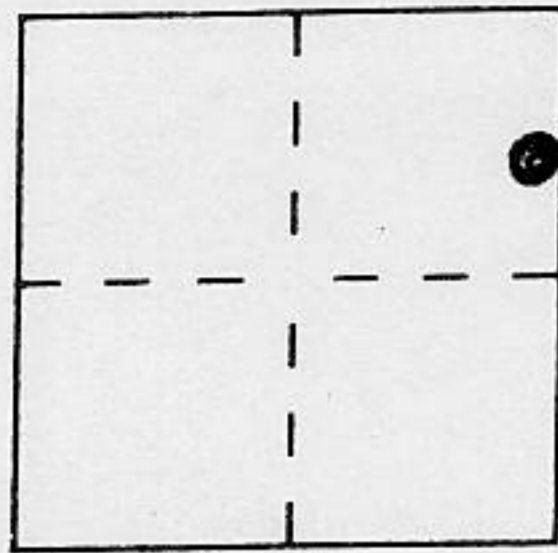


# CORNER RECORD

Document Number \_\_\_\_\_

City of \_\_\_\_\_ County of PLACER, California

Brief Legal Description LOT 58 MARTIS WOODS ESTATES TR. # 496  
BOOK "N" OF MAPS PAGE 27



SEC. 22  
T. 17N.  
R. 16E.  
M.D.M.

### CORNER TYPE

Government Corner  Control   
Meander  Property   
Rancho  Other   
Date of Survey 4/12/96

### COORDINATES (Optional)

N. \_\_\_\_\_  
E. \_\_\_\_\_  
Zone \_\_\_\_\_ Datum \_\_\_\_\_  
Elev. \_\_\_\_\_

Corner — Left as found  Found and tagged  Established  Reestablished  Rebuilt

Identification and type of corner found: Evidence used to identify or procedure used to establish or reestablish the corner:

- Δ = FOUND 2" BRASS DISC IN MUN. WELL L.S. 4165 PER "N" MAPS/27
- = FOUND 5/8" REBAR @ CNT. OF SAC
- ⊙ = FOUND 3/4" CAPPED IRON PIPE STAMPED L.S. 4165
- ⊗ = FOUND 5/8" REBAR w/PLAS. CAP STAMPED R.C.E. 20257

A description of the physical condition of the monument as found and as set or reset:

- = SET NAIL & TAG IN ROCK 0.5' BELOW GR. STAMPED L.S. 5549

JN. 9621

### SURVEYOR'S STATEMENT

This Corner Record was prepared by me or under my direction in conformance with the Land Surveyors' Act on APRIL 12 1996.

Signed Charles R. Sage L.S. or R.C.E. Number L.S. 5549  
LIC. EXPIRES 6-30-97



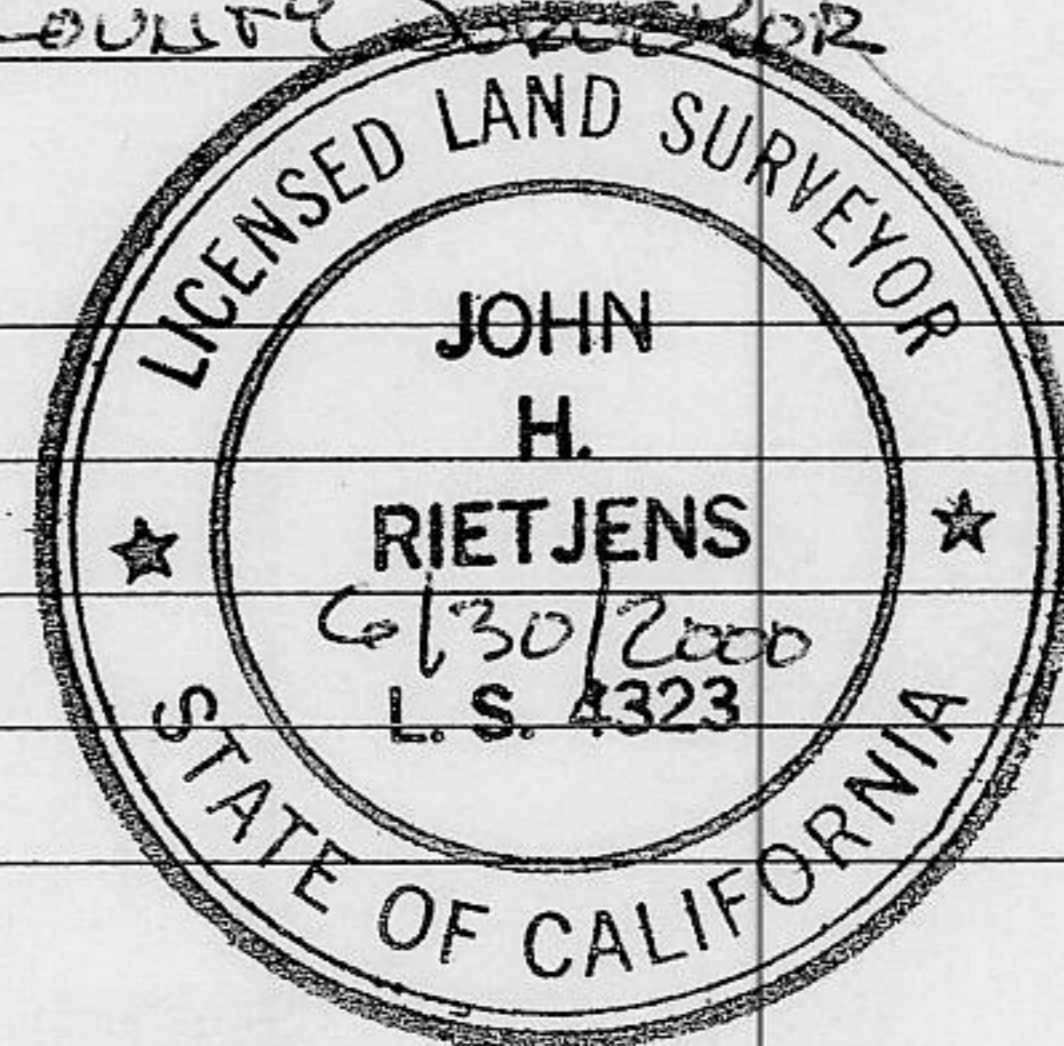
### COUNTY SURVEYOR'S STATEMENT

This Corner Record was received MAY 17 1996 and examined

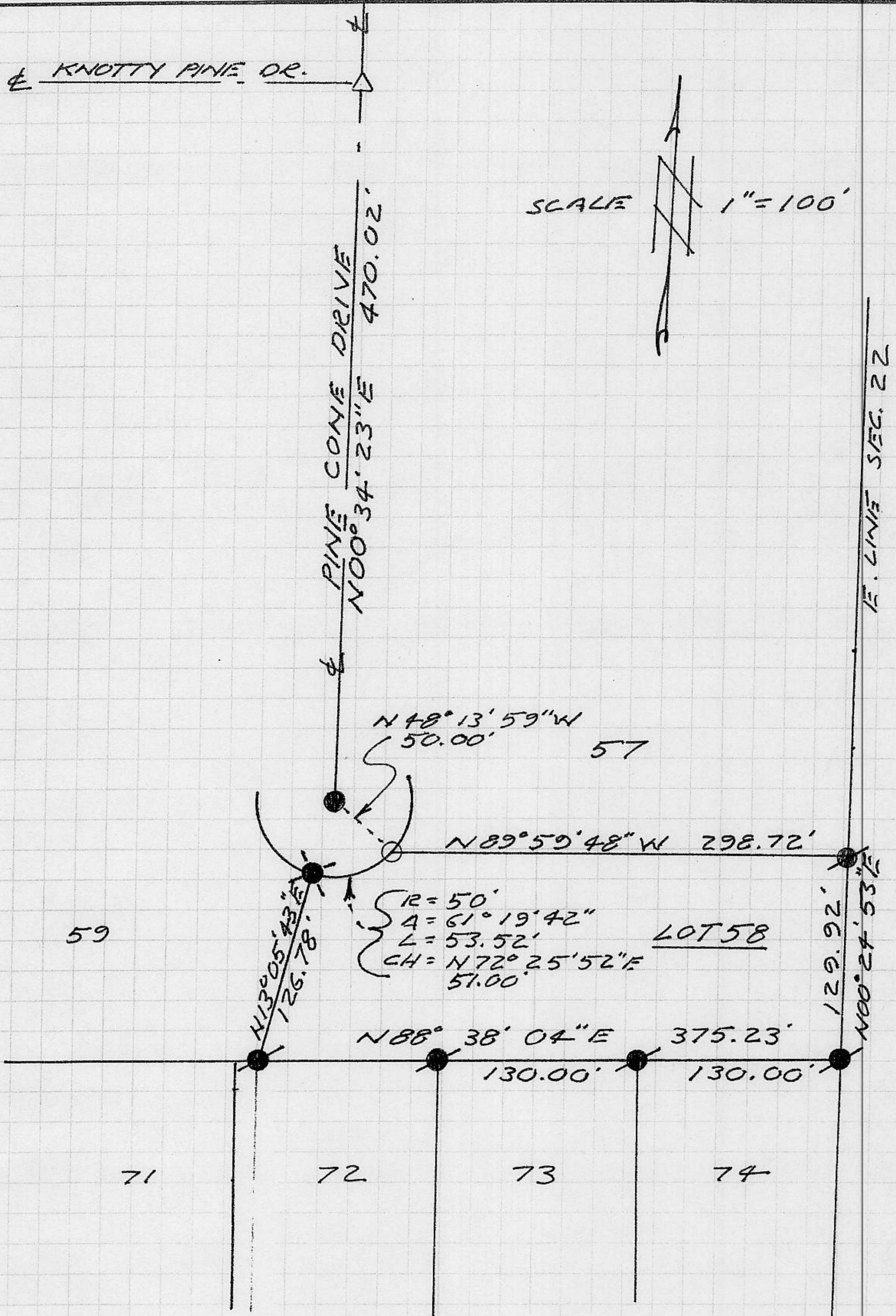
and filed MAY 23 1996.

Signed John Rietjens Title DEPUTY COUNTY SURVEYOR

County Surveyor's Comment \_\_\_\_\_



BOOK 5 CORNER RECORDS PAGE 35



NOTE: THE BEARINGS & DISTANCES SHOWN ARE RECORD PER "N/MAR/27. NO MATERIAL DISCREPANCIES WITH RECORD INFORMATION WERE FOUND