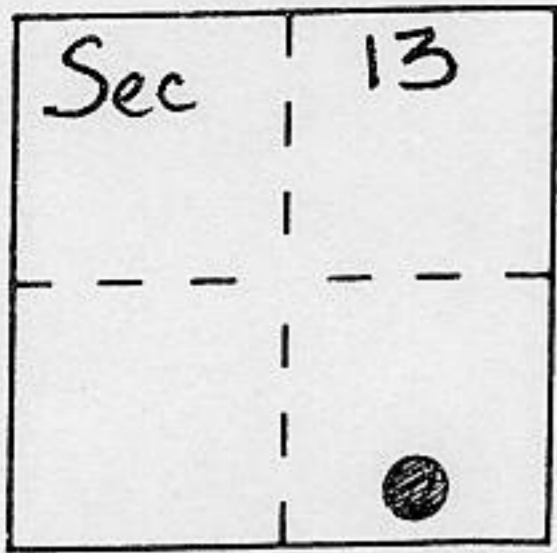


CORNER RECORD

Document Number _____

City of _____ County of Placer, California

Brief Legal Description Lot 1 Block D Lake Tahoe Park Subd. #1
Books D of Maps Page 17



T.15N.
 R.16E.
 M.D.M.

CORNER TYPE

Government Corner Control
 Meander Property
 Rancho Other
 Date of Survey 1/4/96

COORDINATES (Optional)

N. _____
 E. _____
 Zone _____ Datum _____
 Elev. _____

Corner — Left as found Found and tagged Established Reestablished Rebuilt

Identification and type of corner found: Evidence used to identify or procedure used to establish or reestablish the corner:

- = Found 3" diam. iron pipe per 10/sur/115.
- ' = Found spike + aluminum washer per 10/sur/115.
- / = Found spike at centerline intersection per 10/sur/115.

A description of the physical condition of the monument as found and as set or reset:

- = Set 3/4" iron pipe w/plastic plug stamped L.S. 5549
- = Found remains of 2x2 original hub, set 3/4" iron pipe w/plastic plug stamped L.S. 5549

JN: 9602

SURVEYOR'S STATEMENT

This Corner Record was prepared by me or under my direction in conformance with the Land Surveyors' Act on JAN. 10 1996.

Signed Charles R. Sage L.S. or R.C.E. Number LS 5549
LIC. EXP. 6-30-97

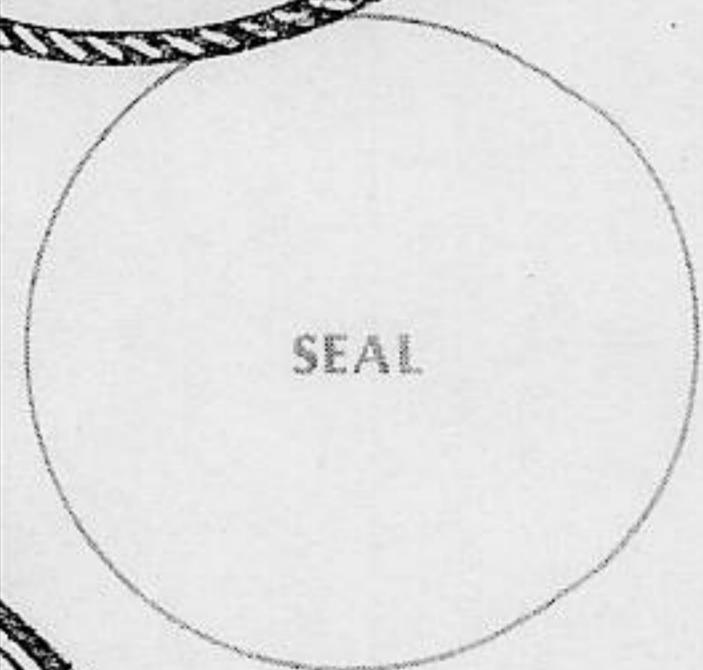


COUNTY SURVEYOR'S STATEMENT

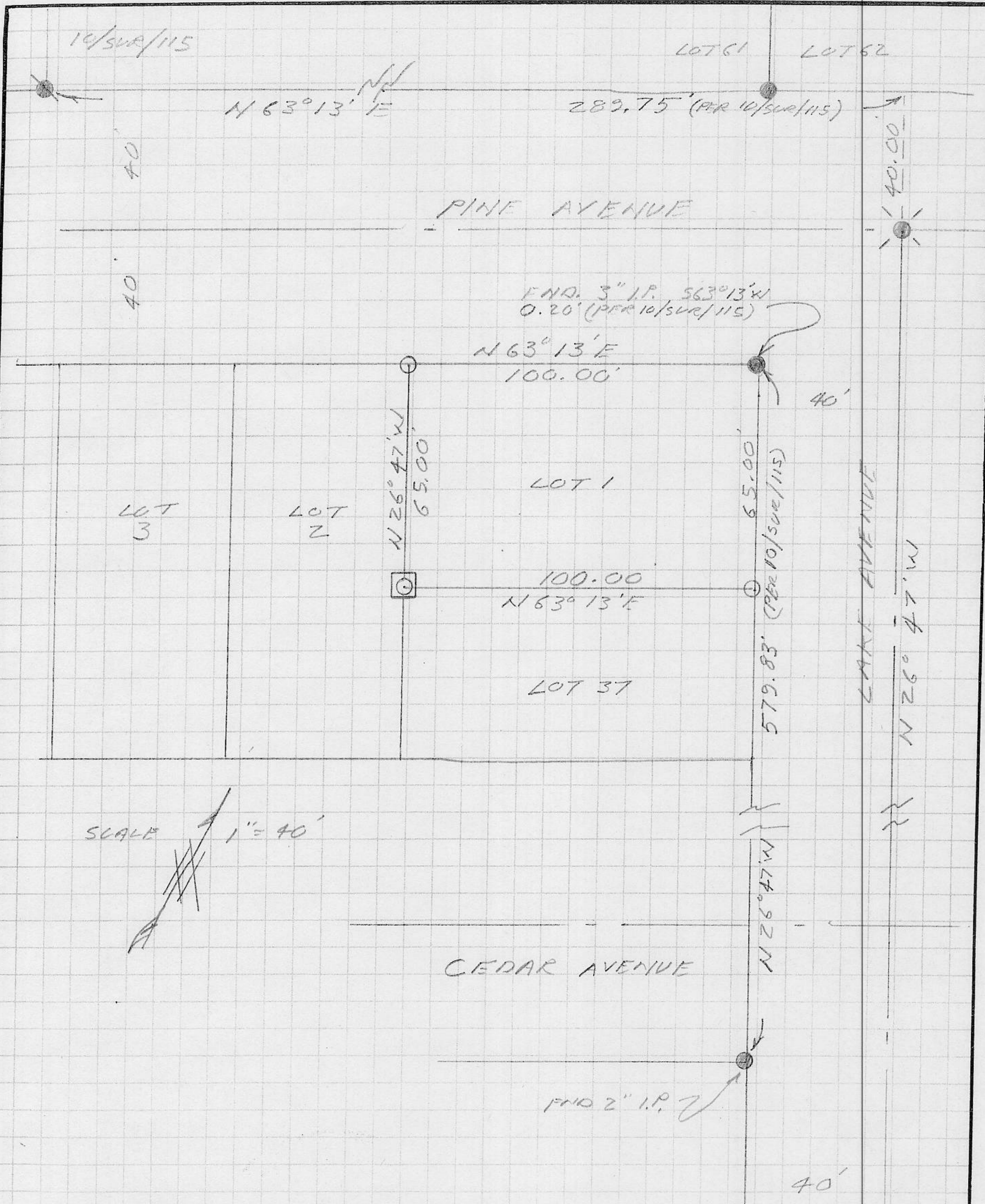
This Corner Record was received MAY 17 1996 and examined and filed MAY 23 1996.

Signed John Rietjens Title DEPUTY COUNTY SURVEYOR

County Surveyor's Comment _____



BOOK 5 CORNER RECORDS PAGE 34



Note: All information shown are record per Book D of Maps Page 17. No material discrepancies with record information were found unless otherwise noted.