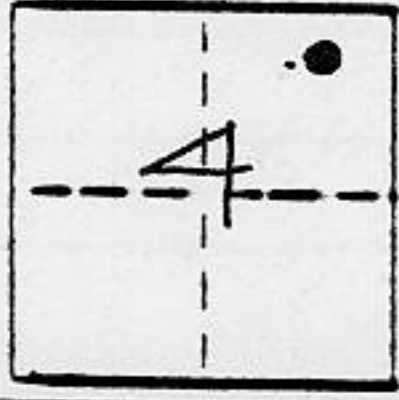


CORNER RECORD

COUNTY OF PLACER T. 15N R. 16E M.P. _____ MERIDIAN CALIFORNIA

CORNER TYPE: GOV'T. CORNER MEANDER RANCHO CONTROL OTHER
 CORNER IDENTIFICATION - DATE OF VISIT 5-23 1990



LOT 253, ALPINE MEADOWS #8, BOOK "I" MAPS PAGE 53

CORNER - LEFT AS FOUND FOUND AND TAGGED REESTABLISHED OBLITERATED CORNER REBUILT

PHYSICAL DESCRIPTION OF CORNER FOUND: EVIDENCE AND METHOD USED TO IDENTIFY OR REESTABLISH _____

FR. MONUMENT AS INDICATED.

PHYSICAL DESCRIPTION OF MONUMENTS REBUILT OR PERPETUATED _____

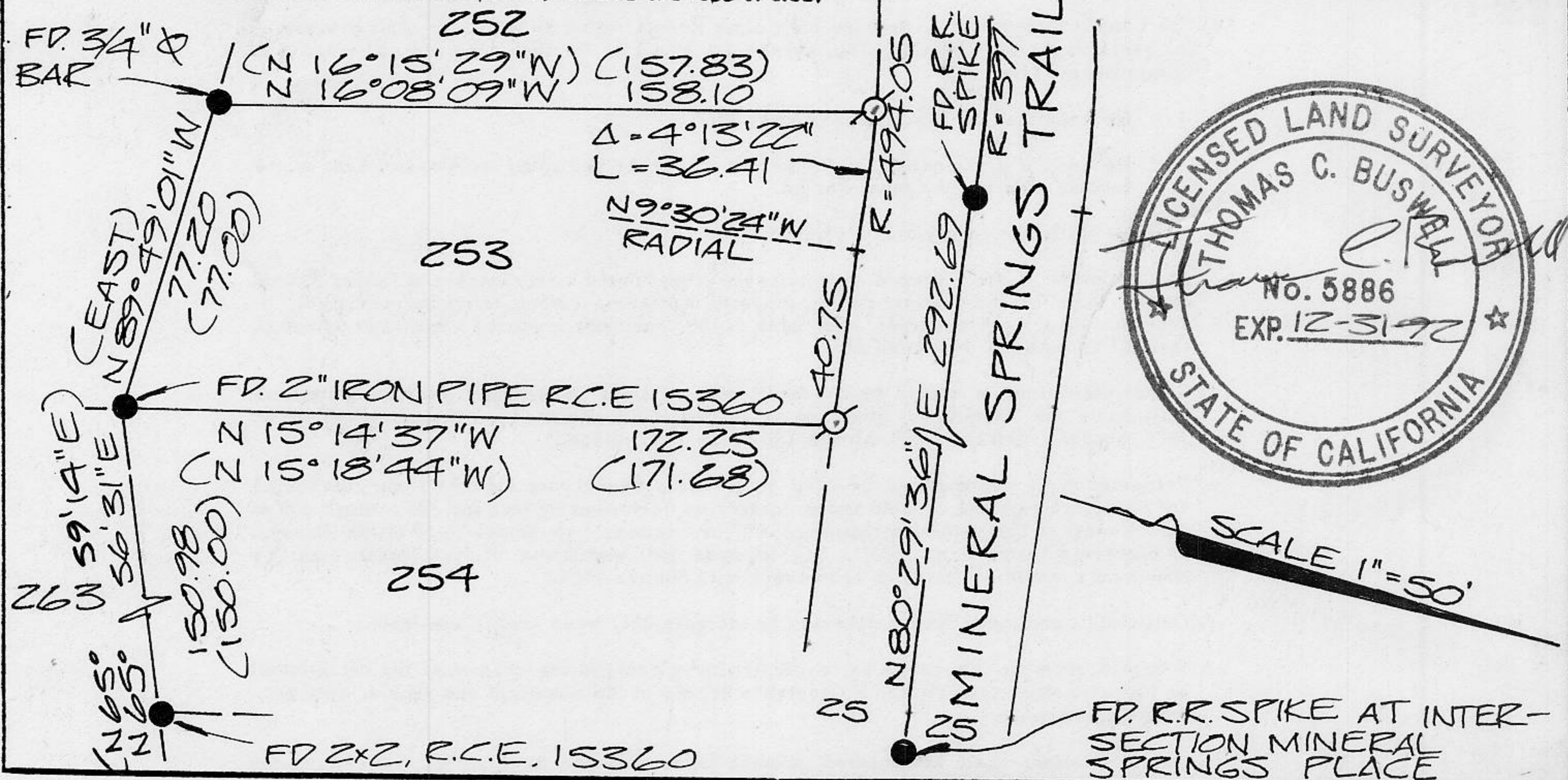
On SET 5/8" Ø REBAR WITH YELLOW PLASTIC CAP STAMPED L.S. 5886 UNLESS OTHERWISE INDICATED.

CALIFORNIA COORDINATE SYSTEM ORDER: FIRST SECOND THIRD NOT APPLICABLE

STATIONS USED: NGS (USC & GS) STATE COUNTY OTHER STATION _____ STATION _____

ZONE _____ ELEVATION _____ NORTHINGS (Y) _____ EASTINGS (X) _____

SKETCH: (Include reference tie or witness points, remarks and topo of area)



() ~ RECORD I M 53



SCALE 1"=50'

SURVEYOR'S CERTIFICATE

THIS CORNER RECORD WAS PREPARED BY ME OR UNDER MY DIRECTION IN CONFORMANCE WITH THE LAND SURVEYORS ACT ON 6-30 1990

SIGNED: Thomas C. Buswell

L.S. or R.C.E. No.: 5886

SEAL

COUNTY SURVEYOR'S CERTIFICATE

THIS CORNER RECORD WAS RECEIVED 7/24 1990 AND EXAMINED AND FILED 7/25 1990

BY John R. [Signature] TITLE: DEPUTY COUNTY SURVEYOR

DOCUMENT No. _____ STATEMENT ON BACK OF SHEET

YES NO

BOOK 2, CORNER RECORDS, PAGE 42