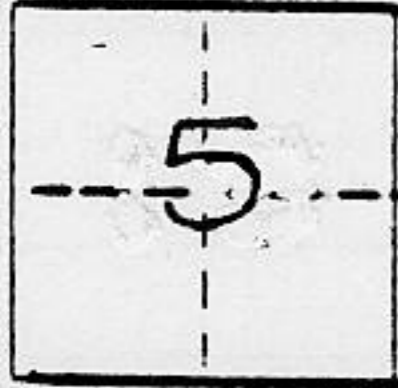


**CORNER RECORD**

COUNTY OF PLACER T. 15N R. 16E M.D. CALIFORNIA MERIDIAN

CORNER TYPE: GOV'T. CORNER  MEANDER  RANCHO  CONTROL  OTHER   
 CORNER IDENTIFICATION - DATE OF VISIT 5-15 19 90



LOT 2, BEAR CREEK SUBDIVISION, BOOK H MAPS 19

CORNER - LEFT AS FOUND  FOUND AND TAGGED  REESTABLISHED OBLITERATED CORNER  REBUILT

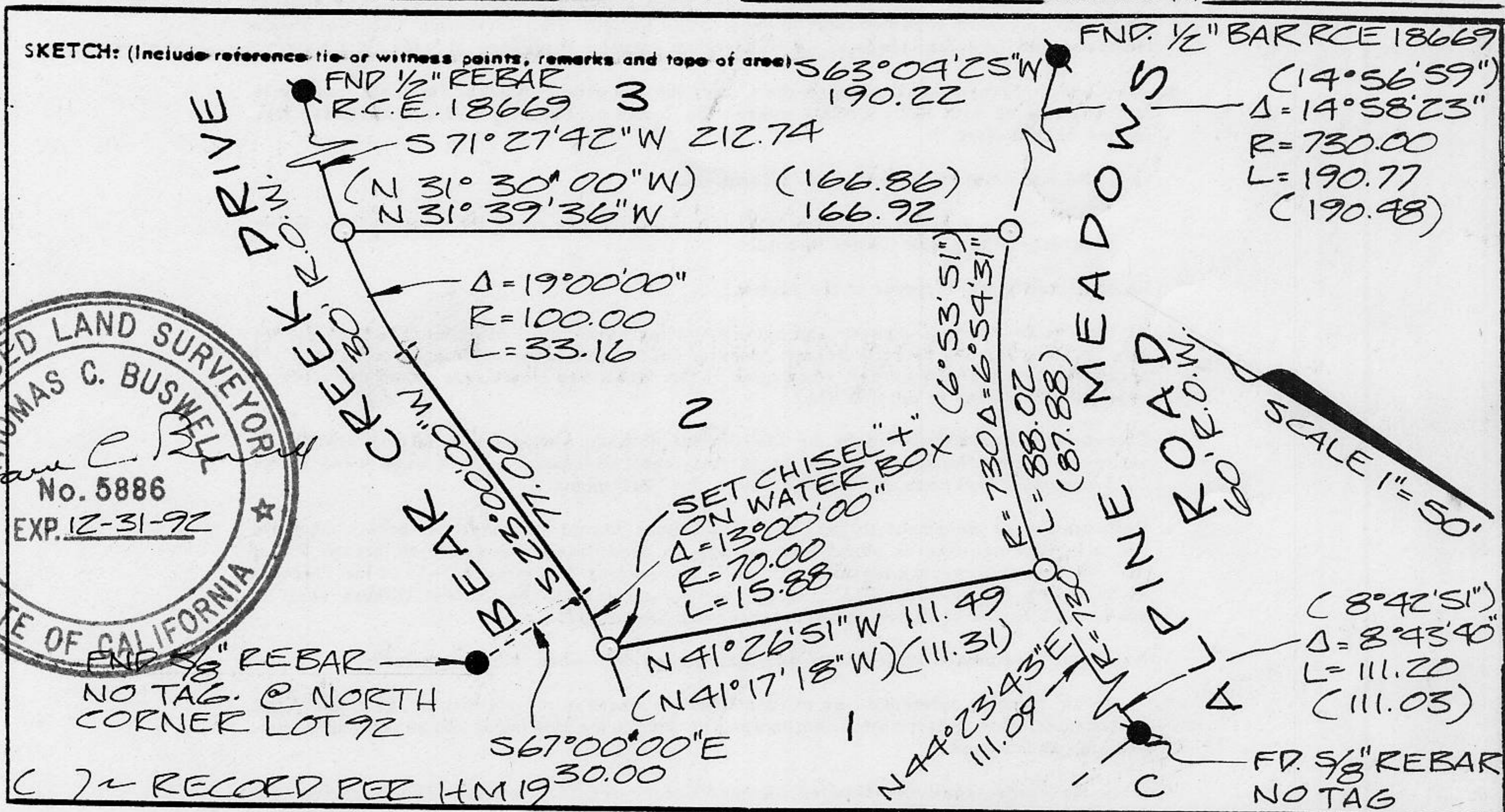
PHYSICAL DESCRIPTION OF CORNER FOUND: EVIDENCE AND METHOD USED TO IDENTIFY OR REESTABLISH

FOUND MONUMENT AS INDICATED.

PHYSICAL DESCRIPTION OF MONUMENTS REBUILT OR PERPETUATED

SET 5/8" REBAR WITH YELLOW PLASTIC CAP STAMPED L.S. 5886 UNLESS OTHERWISE INDICATED.

CALIFORNIA COORDINATE SYSTEM ORDER: FIRST  SECOND  THIRD  NOT APPLICABLE  
 STATIONS USED: NGS (USC & GS)  STATE  COUNTY  OTHER  STATION \_\_\_\_\_ STATION \_\_\_\_\_  
 ZONE \_\_\_\_\_ ELEVATION \_\_\_\_\_ NORTHINGS (Y) \_\_\_\_\_ EASTINGS (X) \_\_\_\_\_



**SURVEYOR'S CERTIFICATE**

THIS CORNER RECORD WAS PREPARED BY ME OR UNDER MY DIRECTION IN CONFORMANCE WITH THE LAND SURVEYORS ACT ON JUNE 22, 19 90

SIGNED: Thomas C. Buswell

L.S. or R.C.E. No.: 5886

SEAL

**COUNTY SURVEYOR'S CERTIFICATE**

THIS CORNER RECORD WAS RECEIVED 7/24 1990 AND EXAMINED AND FILED 7/25 1990

BY: John R. Jones  
 TITLE: DEPUTY COUNTY SURVEYOR

DOCUMENT No. \_\_\_\_\_  
 STATEMENT ON BACK OF SHEET

YES  NO

BOOK 2, CORNER RECORDS, PAGE 43