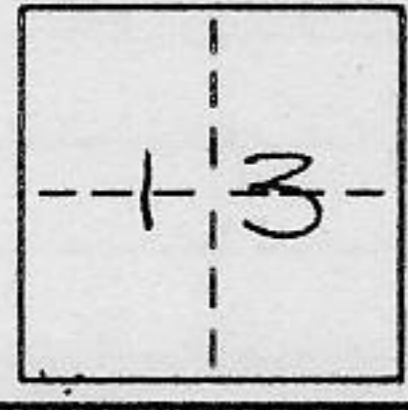


CORNER RECORD

COUNTY OF PLACER T. 15N R. 16E MOUNT DIABLO MERIDIAN CALIFORNIA

CORNER TYPE: GOV'T. CORNER MEANDER RANCHO CONTROL OTHER
CORNER IDENTIFICATION - DATE OF VISIT JAN. 7TH 1991



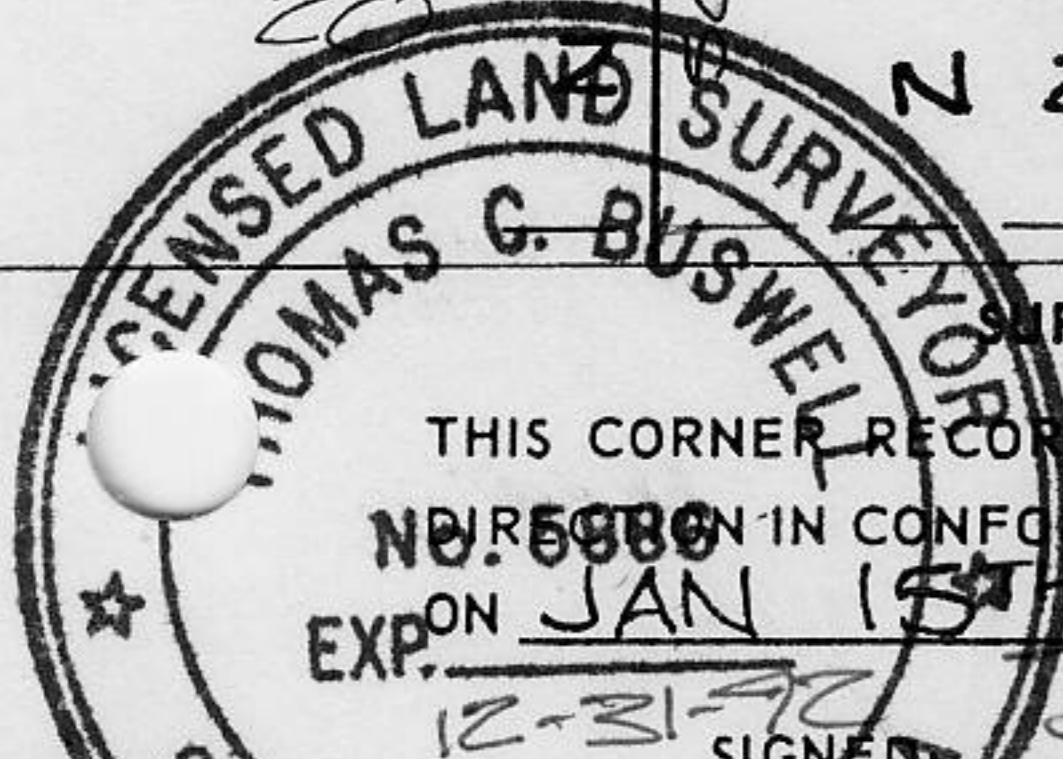
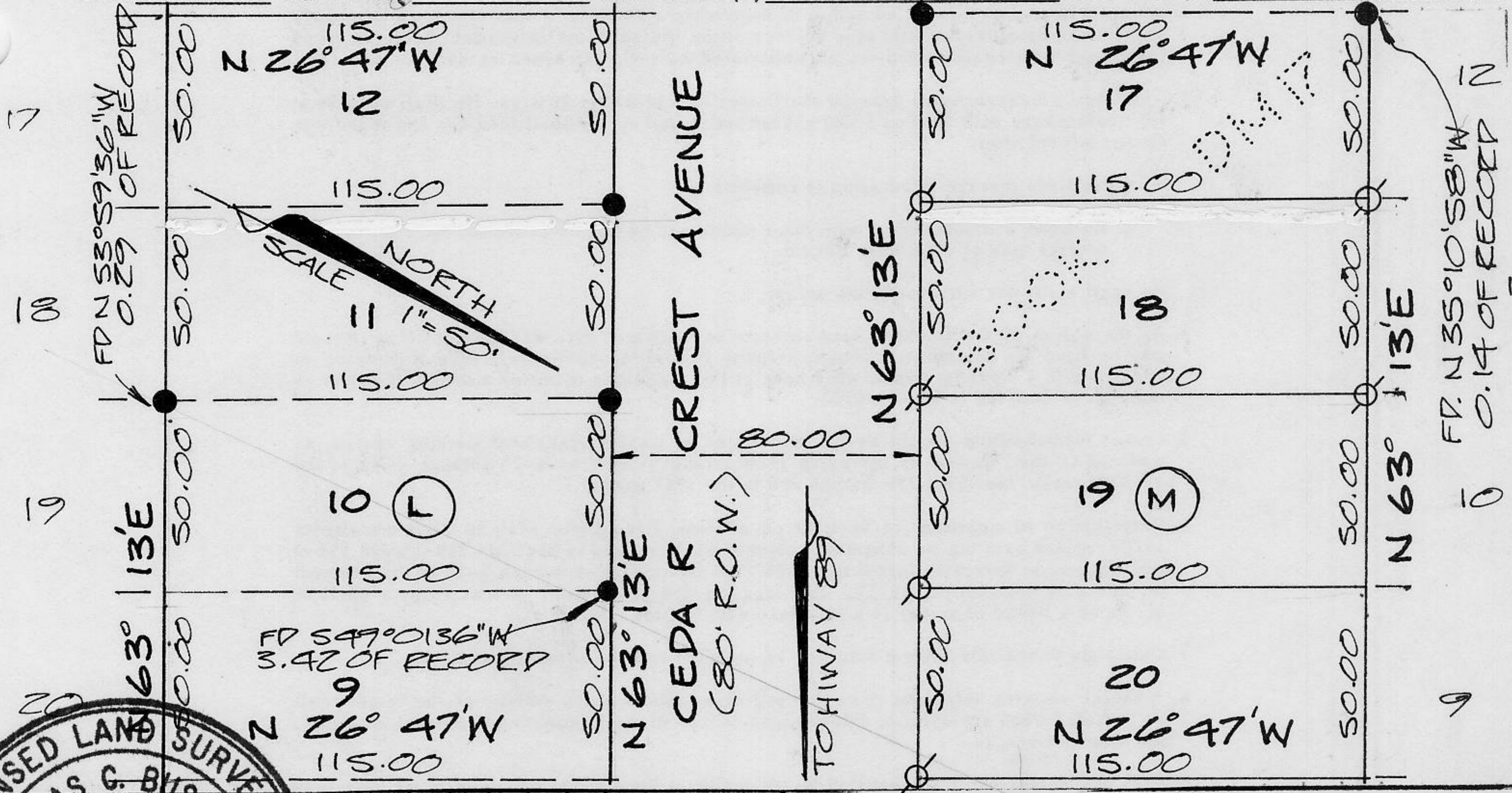
LOT 18
LOT 20, BLOCK "M" LAKE TAHOE PARK, SUBDIVISION NO. 1

CORNER - LEFT AS FOUND FOUND AND TAGGED REESTABLISHED OBLITERATED CORNER REBUILT

PHYSICAL DESCRIPTION OF CORNER FOUND: EVIDENCE AND METHOD USED TO IDENTIFY OR REESTABLISH
● FOUND 5/8" REBAR, NO TAG, UNLESS OTHERWISE NOTED.

PHYSICAL DESCRIPTION OF MONUMENTS REBUILT OR PERPETUATED
○ SET 5/8" REBAR L.S. 5886

CALIFORNIA COORDINATE SYSTEM ORDER: FIRST SECOND THIRD N/A
STATIONS USED: NGS (USC & GS) STATE COUNTY OTHER STATION _____ STATION _____
ZONE _____ ELEVATION _____ NORTHINGS (Y) _____ EASTINGS (X) _____



SURVEYOR'S CERTIFICATE
THIS CORNER RECORD WAS PREPARED BY ME OR UNDER MY
NO. 5886 IN CONFORMANCE WITH THE LAND SURVEYORS ACT
EXP. ON JAN 15 1991
SIGNED: Thomas G. Buswell

COUNTY SURVEYOR'S CERTIFICATE
THIS CORNER RECORD WAS RECEIVED 1/25 1991
AND EXAMINED AND FILED 1/25 1991
BY: Cherubius
TITLE: DEPUTY COUNTY SURVEYOR

Book 2, Corner Records, Page 43