

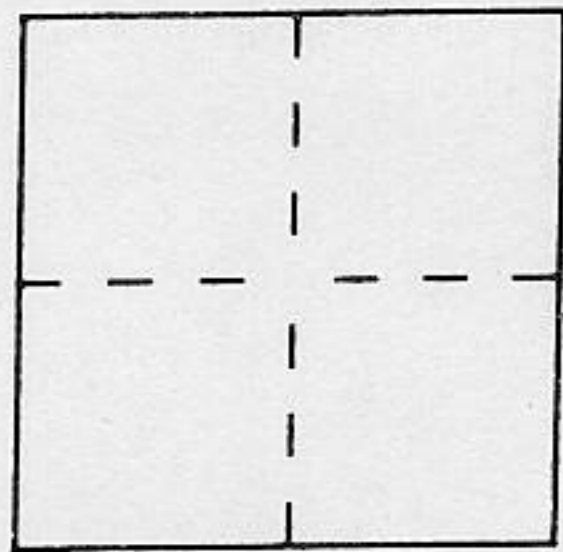
CORNER RECORD

Document Number \_\_\_\_\_

City of ROSEVILLE

County of PLACER, California

Brief Legal Description PARCEL 34B, 28 P.M. 67



SEC 23 & 26  
T 11 N  
R 6 E

CORNER TYPE

- Government Corner
- Meander
- Rancho
- Date of Survey 1/9/96
- Control
- Property
- Other

COORDINATES (Optional)

N. \_\_\_\_\_  
 E. \_\_\_\_\_  
 Zone \_\_\_\_\_ Datum \_\_\_\_\_  
 Elev. \_\_\_\_\_

Corner — Left as found  Found and tagged  Established  Reestablished  Rebuilt

Identification and type of corner found: Evidence used to identify or procedure used to establish or reestablish the corner:

SEE PAGE 2 OF 2

A description of the physical condition of the monument as found and as set or reset:

SEE PAGE 2 OF 2

SURVEYOR'S STATEMENT

This Corner Record was prepared by me or under my direction in conformance with the Land Surveyors' Act on JANUARY 22 1996.

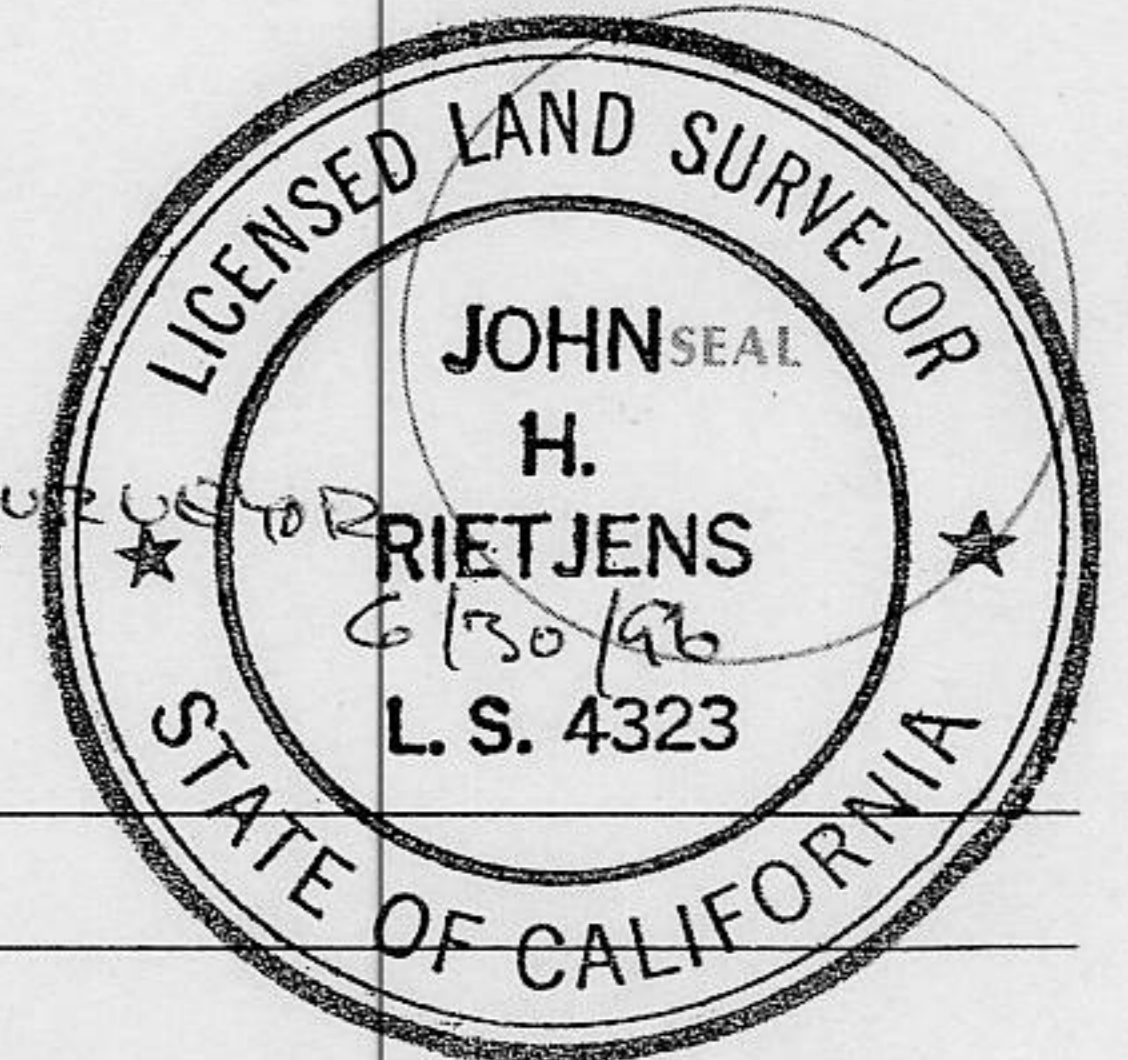
Signed Christopher R. Russell L.S. or R.C.E. Number L.S. 5696



COUNTY SURVEYOR'S STATEMENT

This Corner Record was received JAN 24 1996 and examined and filed FEB 20 1996.

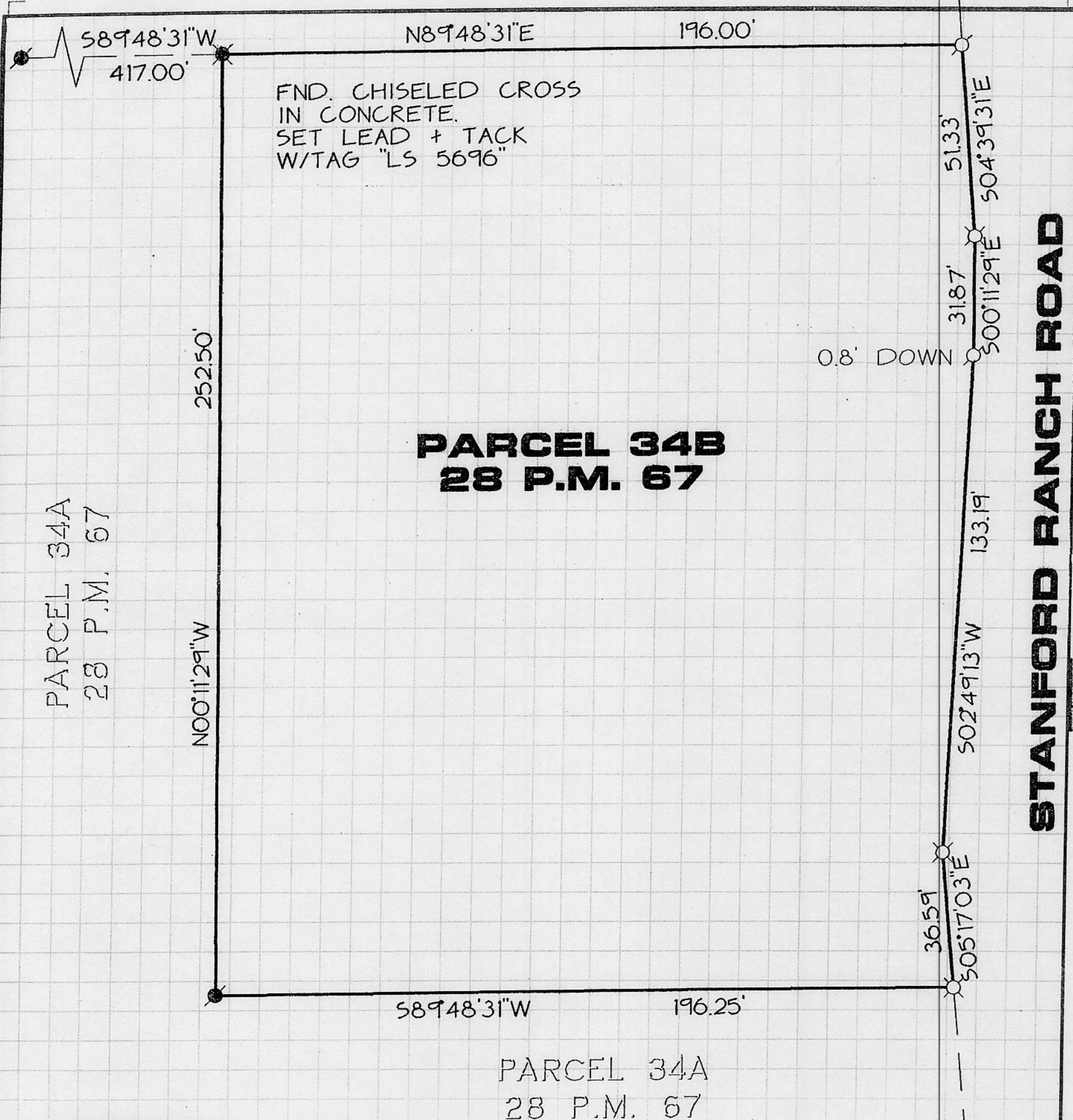
Signed John Rietjens Title DEPUTY COUNTY SURVEYOR



County Surveyor's Comment \_\_\_\_\_

BOOK 5 CORNER RECORDS PAGE 27

**STANFORD RANCH ROAD**



FND. CHISELED CROSS  
IN CONCRETE.  
SET LEAD + TACK  
W/TAG "LS 5696"

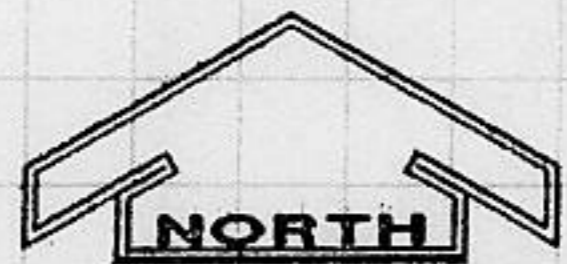
**PARCEL 34B**  
**28 P.M. 67**

PARCEL 34A  
28 P.M. 67

PARCEL 34A  
28 P.M. 67

**LEGEND**

- FND. 1" STEEL ROD  
TAGGED "LS 6046" ..... ●
- FND. MONUMENT AS NOTED ..... ⊗
- SET 5/8" REBAR WITH  
CAP "L.S. 5696" ..... ♂
- SET LEAD + TACK WITH  
TAG "L.S. 5696" IN CONC. .... ⊘



**SCALE: 1"=40'**

JOB NO. 767-00-286