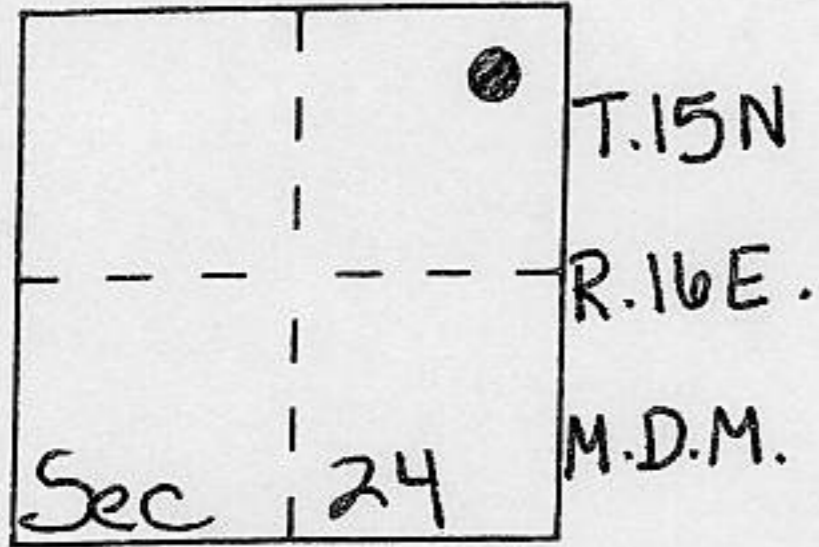


# CORNER RECORD

Document Number \_\_\_\_\_

City of \_\_\_\_\_ County of Placer, California

Brief Legal Description Lot 9 Pinelands Addition #1  
Book E of Maps Page 38



### CORNER TYPE

Government Corner  Control   
 Meander  Property   
 Rancho  Other   
 Date of Survey 7-19-95

### COORDINATES (Optional)

N. \_\_\_\_\_  
 E. \_\_\_\_\_  
 Zone \_\_\_\_\_ Datum \_\_\_\_\_  
 Elev. \_\_\_\_\_

Corner — Left as found  Found and tagged  Established  Reestablished  Rebuilt

Identification and type of corner found: Evidence used to identify or procedure used to establish or reestablish the corner:

● = Found 1/2" steel pins per E/Maps/38

A description of the physical condition of the monument as found and as set or reset:

○ = Set 3/4" iron pipe w/ plastic plug, stamped L.S. 5549

JN: 9577

### SURVEYOR'S STATEMENT

This Corner Record was prepared by me or under my direction in conformance with the Land Surveyors' Act on JULY 21 1995.

Signed Charles R. Sage Jr. L.S. or R.C.E. Number L.S. 5549  
LIC. EXP. 6-30-97

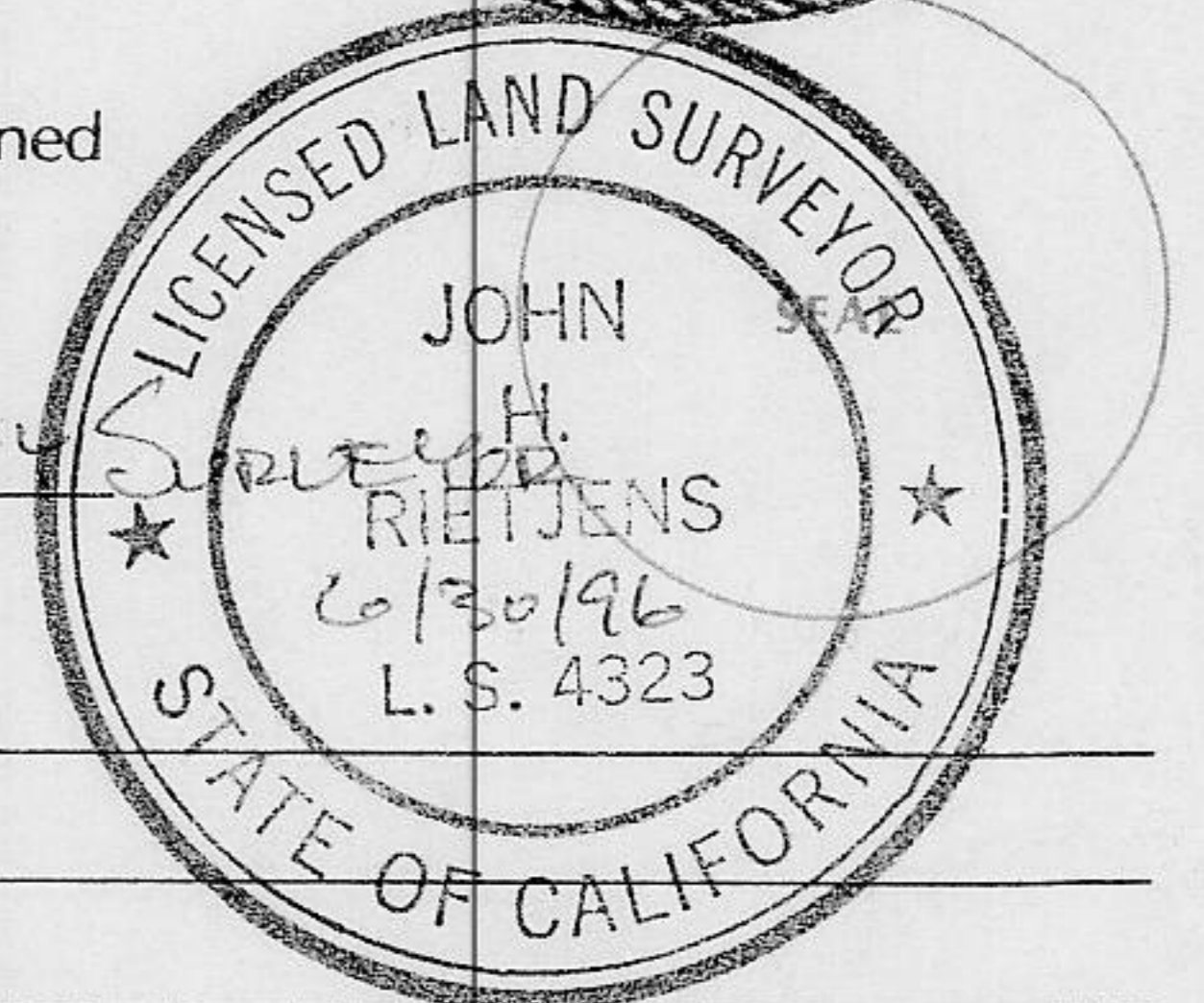


### COUNTY SURVEYOR'S STATEMENT

This Corner Record was received AUG. 24 1995 and examined

and filed AUGUST 28 1995.

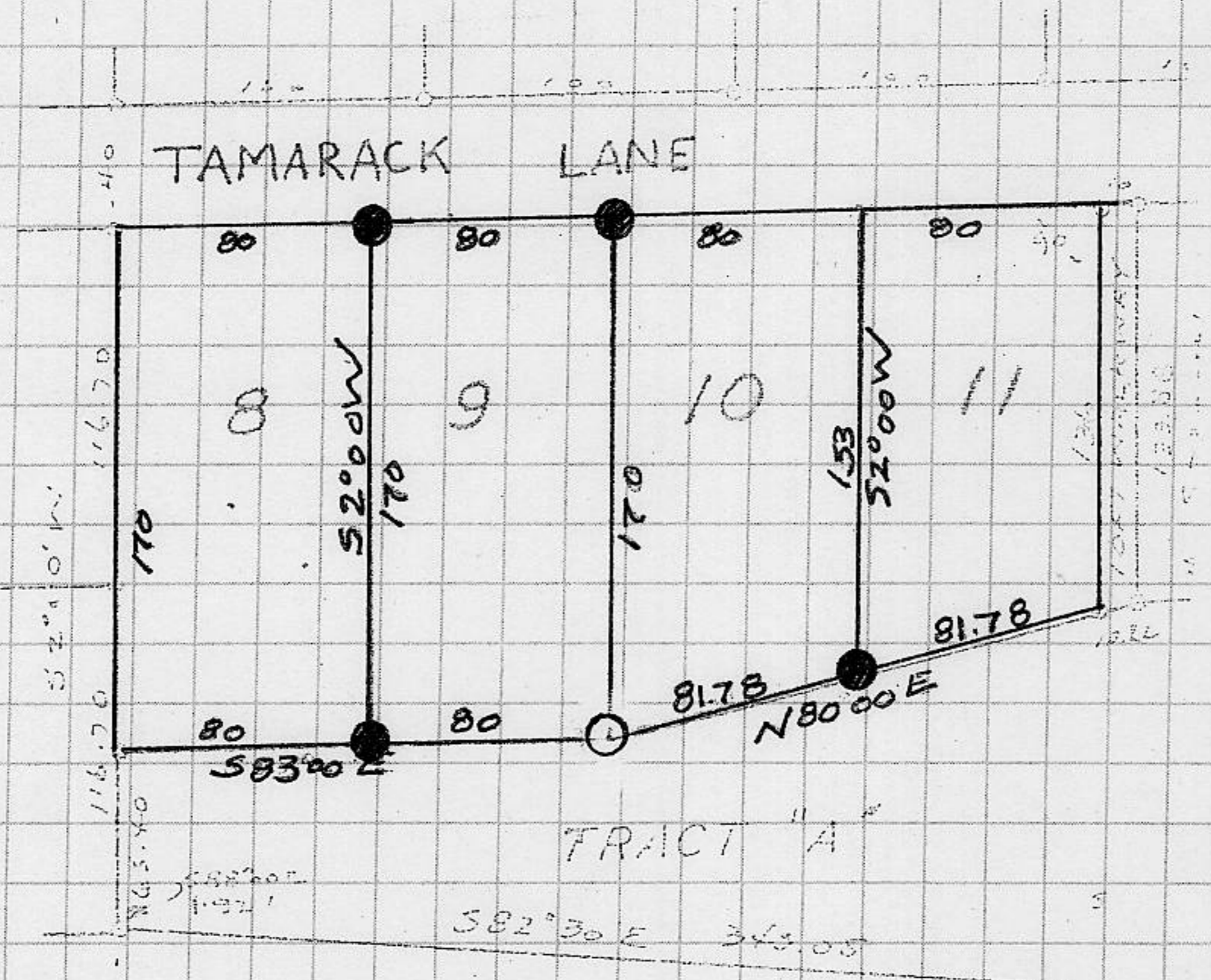
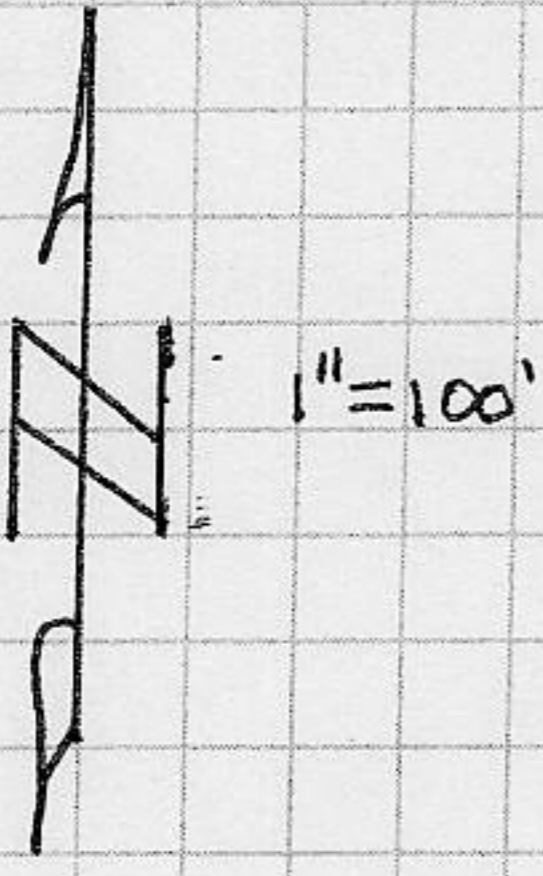
Signed John Rietjens Title Deputy County Surveyor



County Surveyor's Comment \_\_\_\_\_

BOOK 5 CORNER RECORDS PAGE 2

Scale



Note: Bearings and distances shown are record per E/Maps 38,  
No material discrepancies with record information were found.