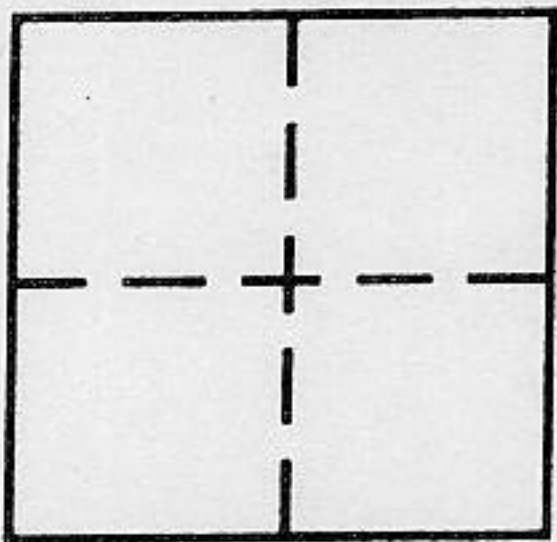


CORNER RECORD

COUNTY OF PLACER, CALIFORNIA

City of N.A. Document Number _____

Brief Legal Description LOT 21, TRACT 314 - HIDDEN OAKS SUB. - BOOK L of MAPS Pg. 40



SW 1/4
SEC 35
T11N
R7E

CORNER TYPE

- Government Corner
- Meander
- Rancho
- Date of Survey _____
- Control
- Property
- Other

COORDINATES (Optional)

N. _____
E. _____
Zone _____ Datum _____
Elev. _____

Corner — Left as found Found and tagged Established Reestablished Rebuilt

Identification and type of corner found: Evidence used to identify or procedure used to establish or reestablish corner:

SEE MAP

A description of the physical condition of the monument as found and as set or reset:

SURVEYOR'S STATEMENT

This Corner Record was prepared by me or under my direction in conformance with the Land

Surveyors' Act on OCTOBER 20, 1997.

Signed Emerson L Smith L.S. or R.C.E. Number LS 3062

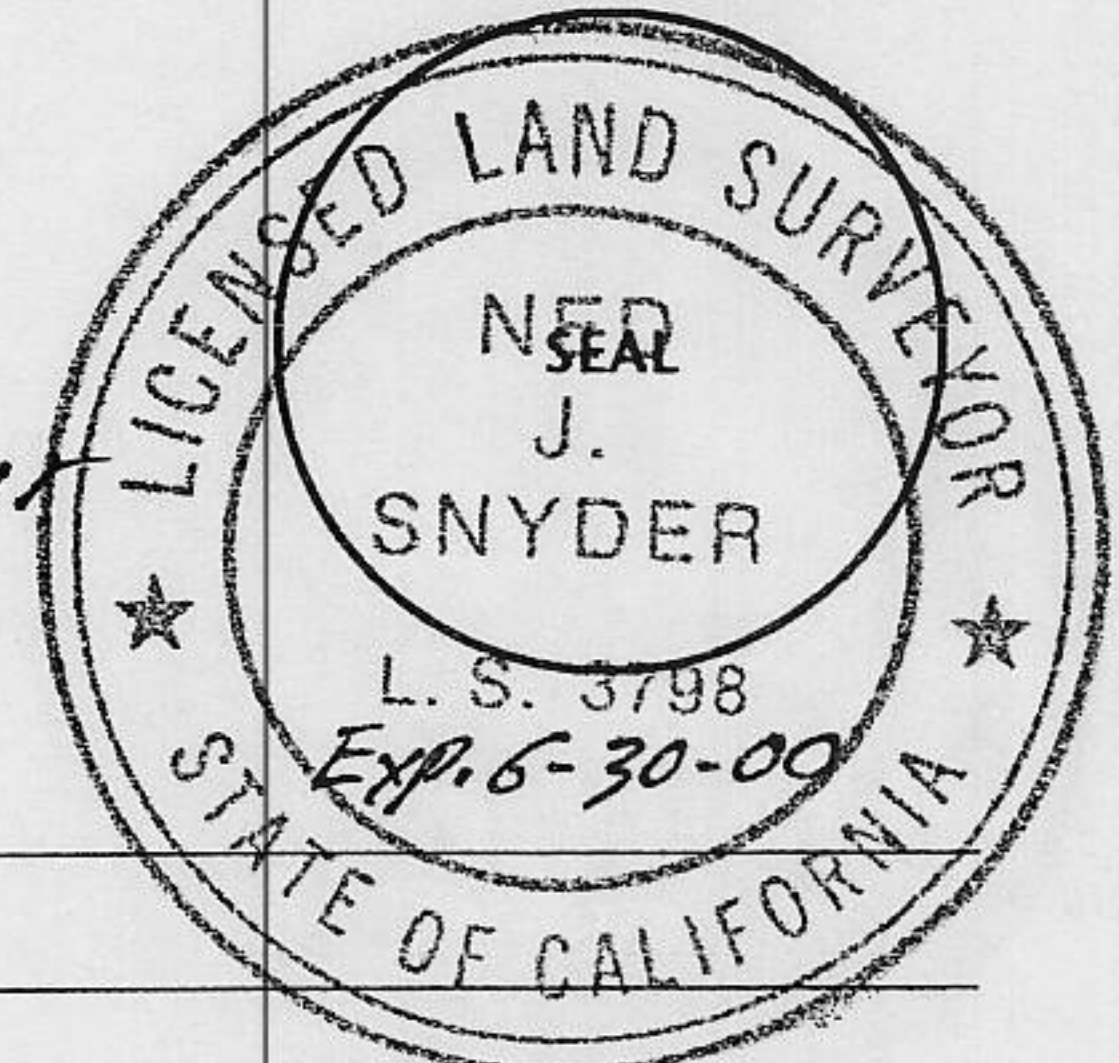


COUNTY SURVEYOR'S STATEMENT

This Corner Record was received October 22 1997 and examined

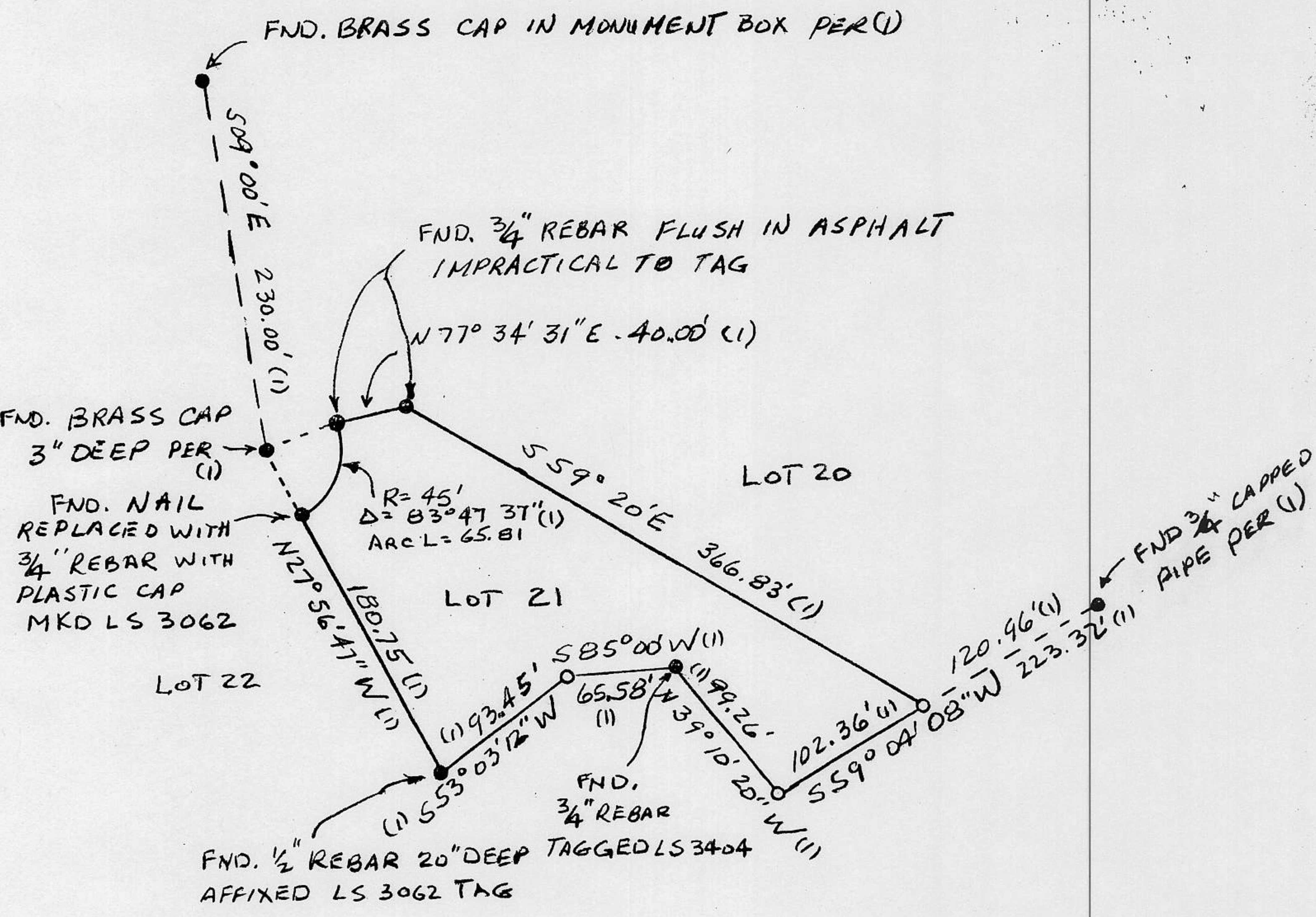
and filed September 18, 1998.

Signed Wesley Snyder Title Deputy Co. Surveyor



County Surveyor's Comment _____

BOOK 5 CORNER RECORDS PAGE 97



MAP SHOWING A RESURVEY OF LOT 21, OF TRACT 314
 HIDDEN OAKS SUBDIVISION
 IN THE SW 1/4 OF SECTION 35, T. 11 N., R. 7 E., M. D. M.
 SCALE: 1" = 100' OCTOBER 1997

EMERSON L. SMITH
 LS 3062

- FND. MONUMENT AS NOTED
- SET 3/4" REBAR WITH PLASTIC CAP MARKED LS 3062

