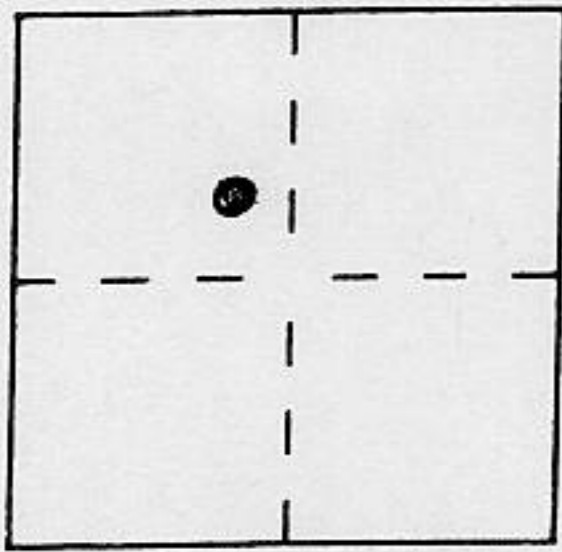


# CORNER RECORD

Document Number \_\_\_\_\_

City of \_\_\_\_\_ County of PLACER, California

Brief Legal Description LOT 12 FULTON ACRES  
BOOK "D" OF MAPS PAGE 12



S.K.C. 28  
T. 16 N.  
R. 17 E.  
M.D.M.

### CORNER TYPE

Government Corner  Control   
 Meander  Property   
 Rancho  Other   
 Date of Survey 6-3-97

### COORDINATES (Optional)

N. \_\_\_\_\_  
 E. \_\_\_\_\_  
 Zone \_\_\_\_\_ Datum \_\_\_\_\_  
 Elev. \_\_\_\_\_

Corner — Left as found  Found and tagged  Established  Reestablished  Rebuilt

Identification and type of corner found: Evidence used to identify or procedure used to establish or reestablish the corner:

- = FOUND ORIGINAL 2x2 WOOD HUB PER "D" MAPS/12
- = FOUND 5/8" REBAR W/PLAS. CAP L.S. 3422
- = FOUND 1/2" REBAR W/TAG, L.S. 3229
- = FOUND 3/4" IRON PIPE, NO TAG

A description of the physical condition of the monument as found and as set or reset:

- = SET 3/4" IRON PIPE W/PLAS. PLUG STAMPED L.S. 5549
- = SET CHISEL "X" ON ROCK

J.N. 9749

### SURVEYOR'S STATEMENT

This Corner Record was prepared by me or under my direction in conformance with the Land Surveyors' Act on JUNE 6, 1997.

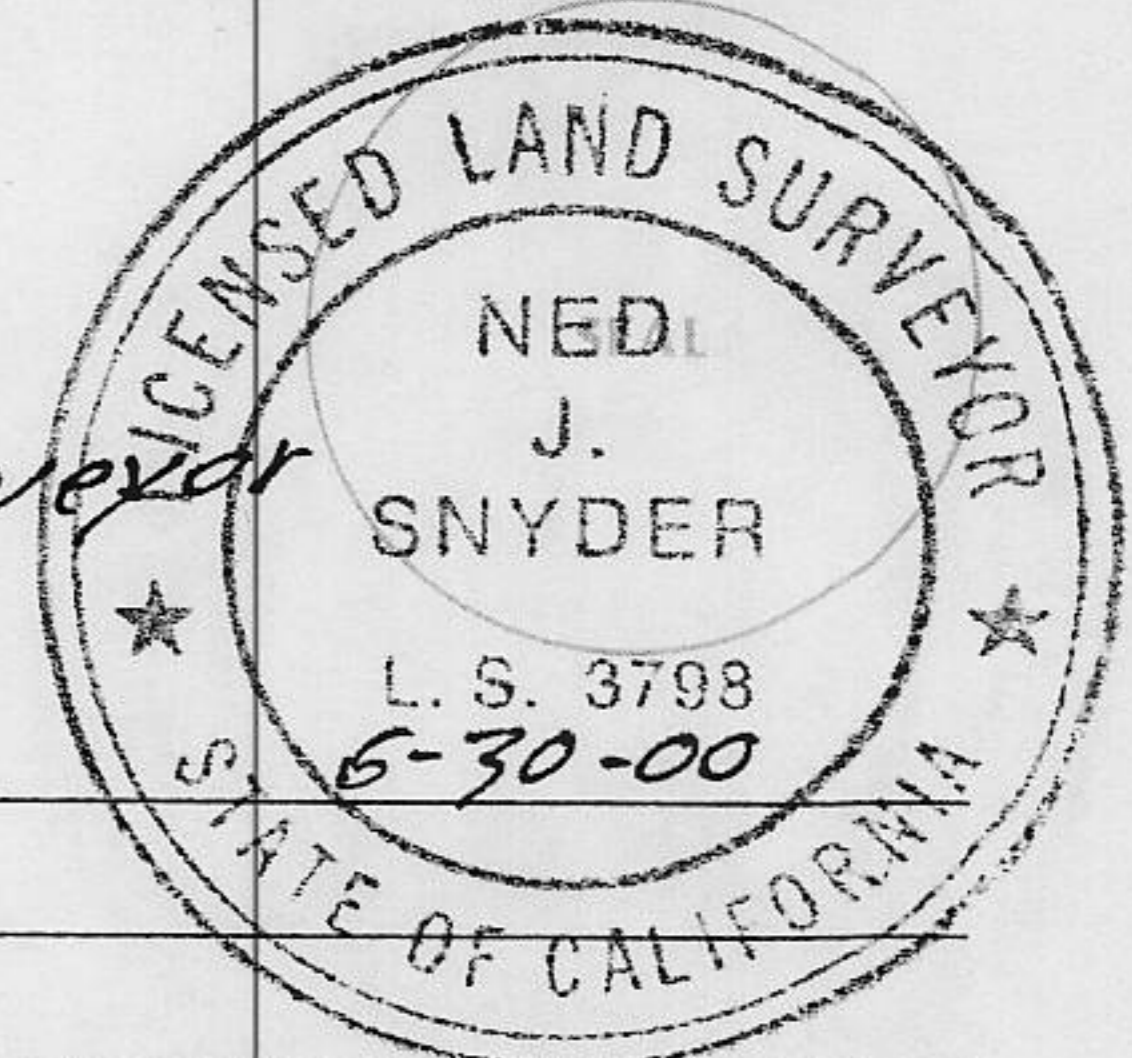
Signed Charles R. Sage L.S. or R.C.E. Number L.S. 5549  
LIC. EXPIRES 6-30-01



### COUNTY SURVEYOR'S STATEMENT

This Corner Record was received July 21, 1997 and examined and filed September 4, 1998.

Signed Ned J. Snyder Title Deputy Co. Surveyor

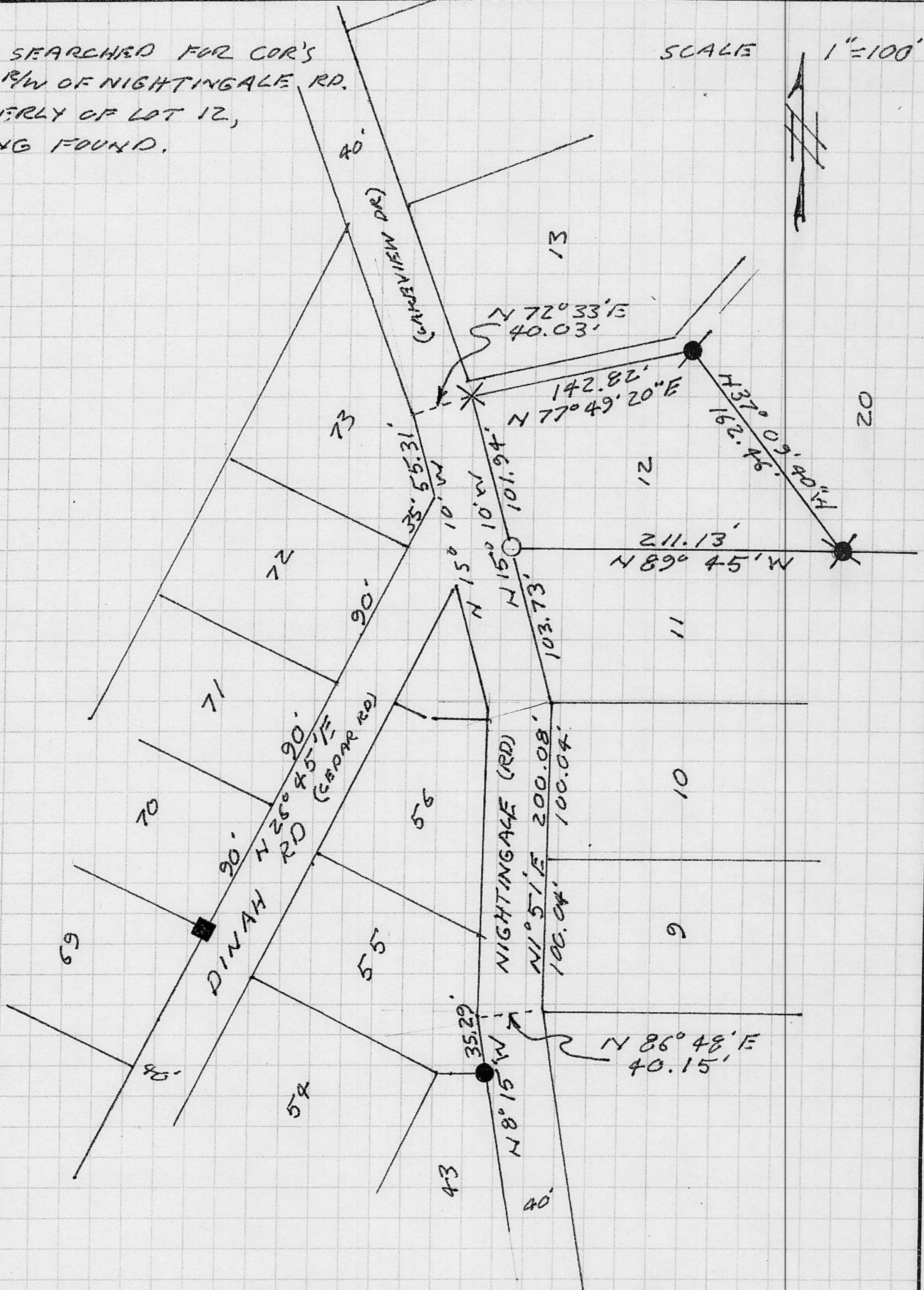


County Surveyor's Comment \_\_\_\_\_

BOOK D OF CORNER RECORDS, PAGE 93

NOTE: SEARCHED FOR COR'S  
ALONG R/W OF NIGHTINGALE RD.  
NORTHERLY OF LOT 12,  
NOTHING FOUND.

SCALE 1"=100'



NOTE: THE BEARINGS & DISTANCES SHOWN ARE  
RECORD PER "D" MAPS/12. NO MATERIAL  
DISCREPANCIES WITH RECORD INFORMATION  
WERE FOUND.