

# CA-FACTS Seroprevalence for SARS-CoV-2 in Placer County

JULIE PARSONNET, MD

DEPARTMENT OF MEDICINE AND OF EPIDEMIOLOGY AND  
POPULATION HEALTH

January 12, 2021

# Objectives

## Objectives

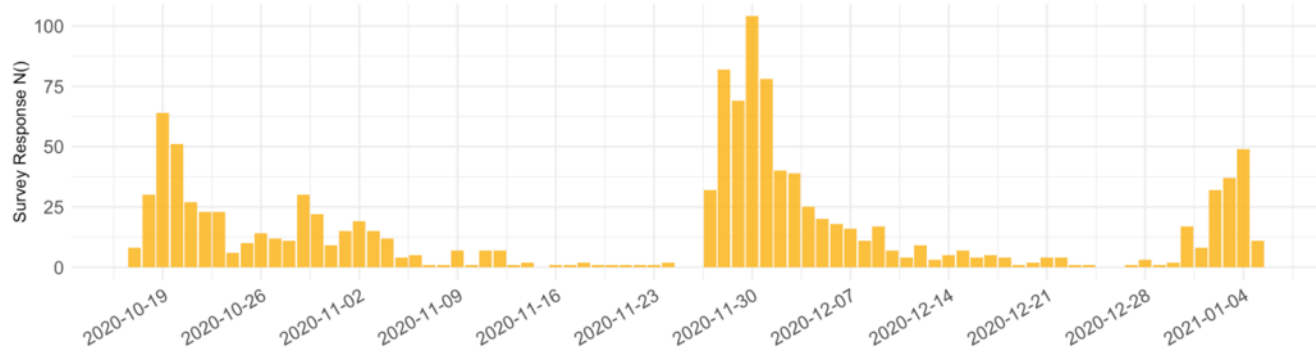
- A. Recruit representative sample of 2000 Placer residents for serosurvey
- B. Conduct serologic testing of these 2000 participants
- C. Conduct confirmatory testing
- D. Orient the data to better understand the information
- E. Provide a dashboard to analyze data

# Process and results

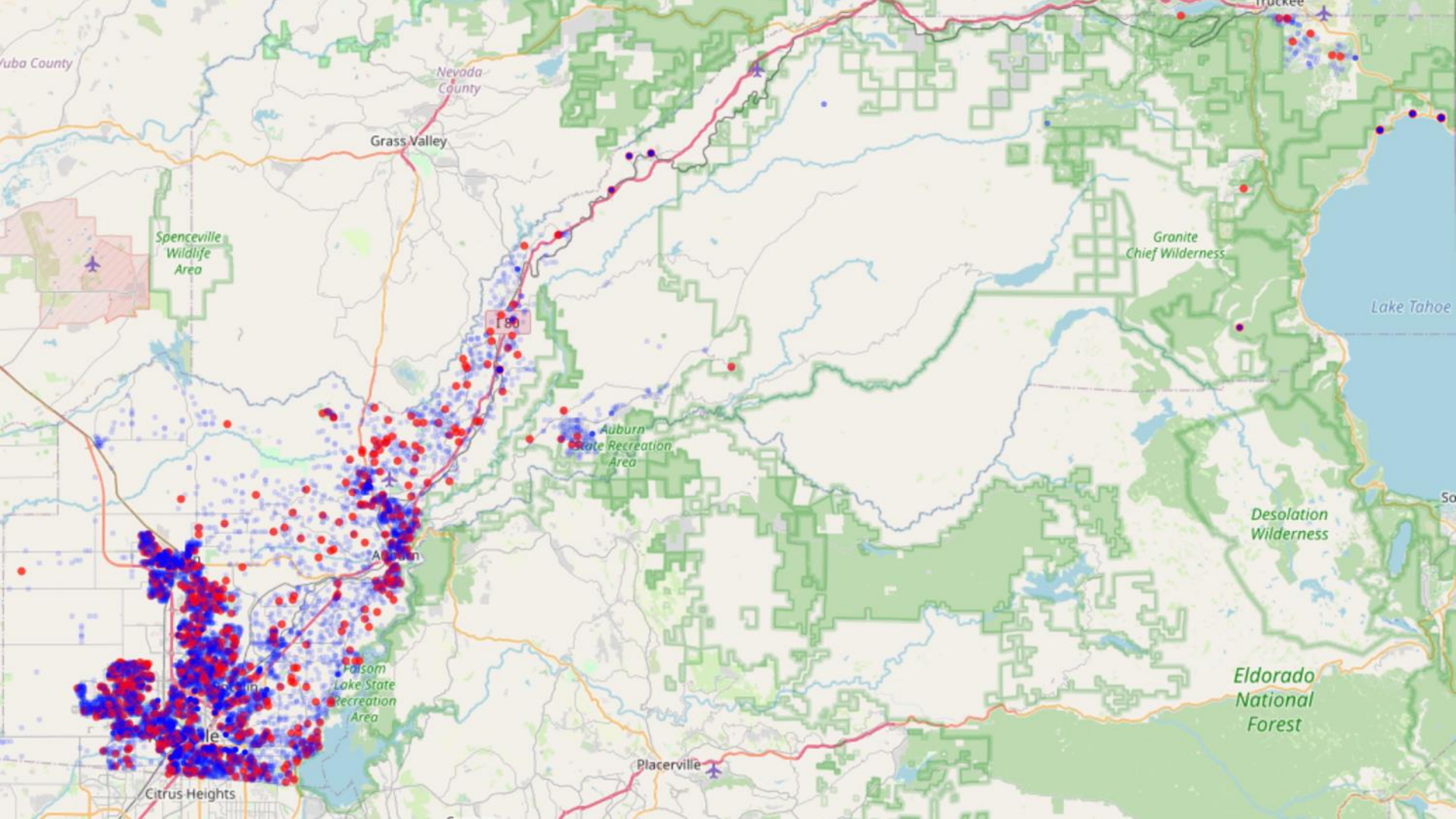


5000 mailings  
10/19/20, 11/1/20

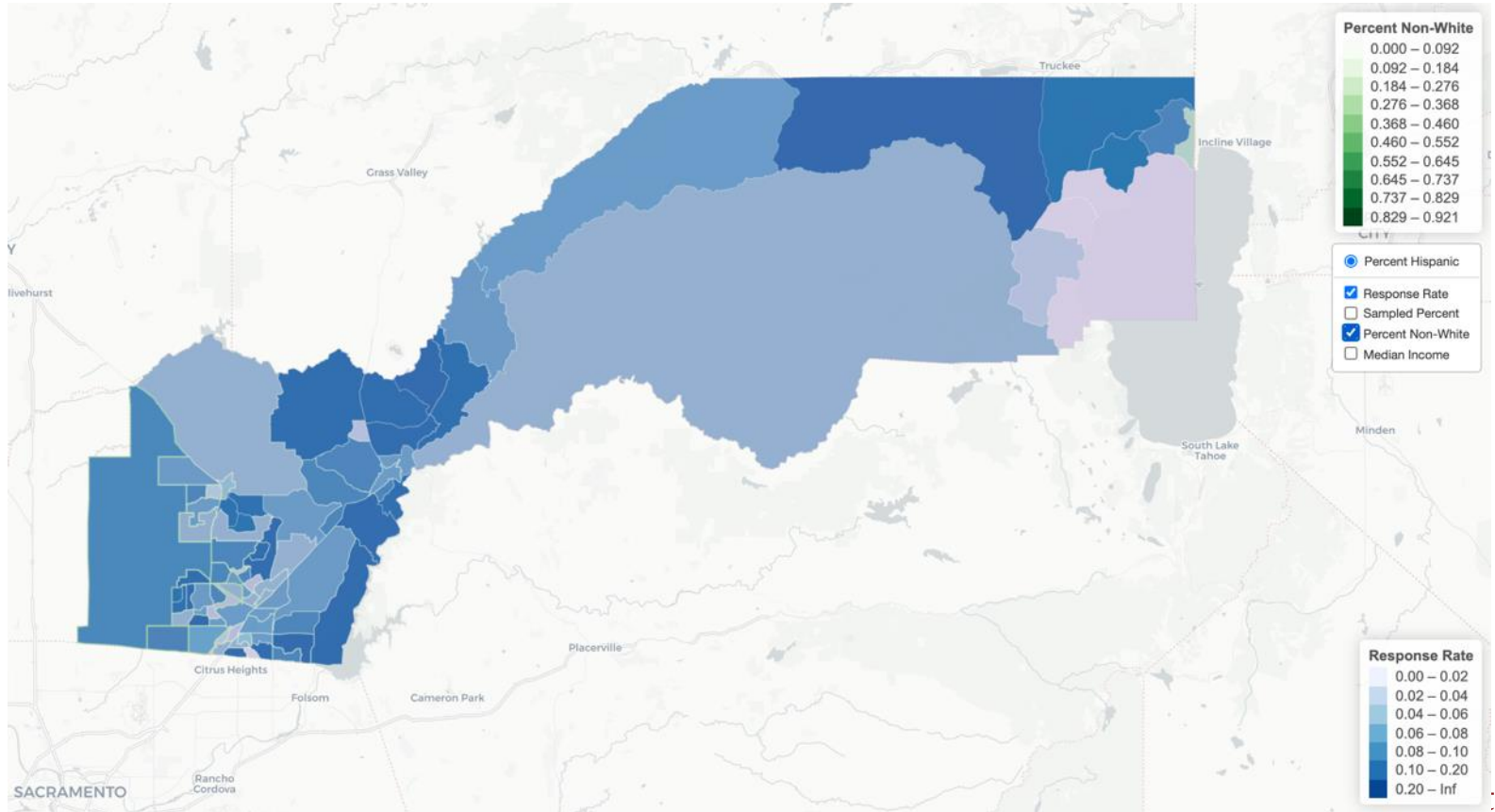
10,000, mailings  
11/30/20



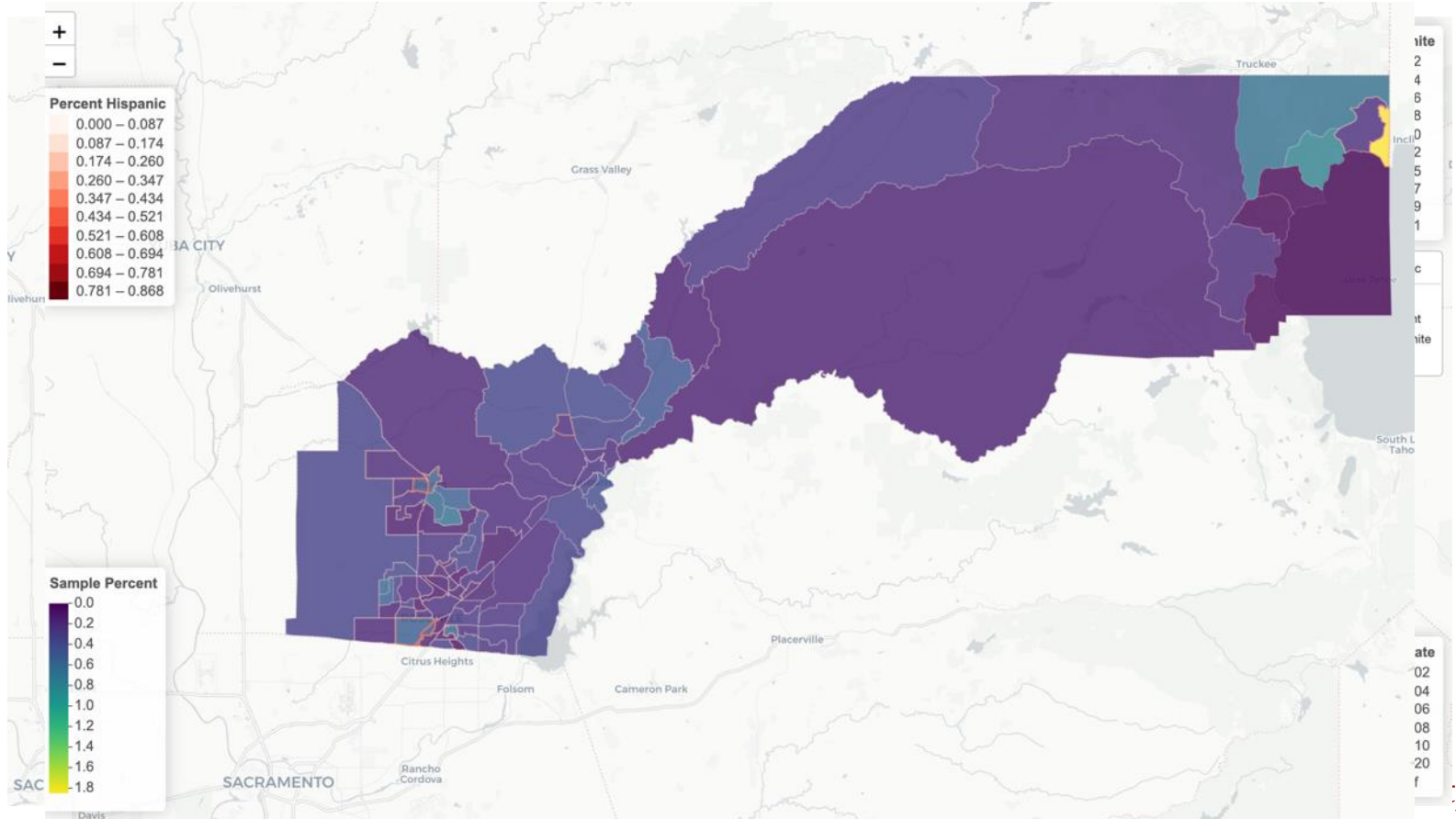
Total 1215 households responded with requests for 2661 kits  
Sent kits to 1065 households to date



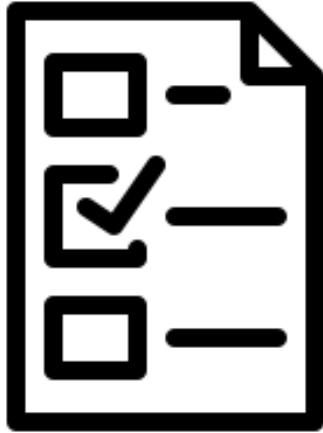
# Geography of participating households



# Geography of participating households



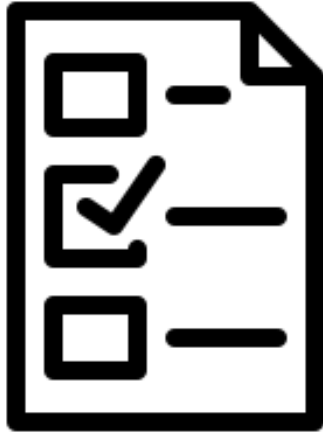
## Who participated



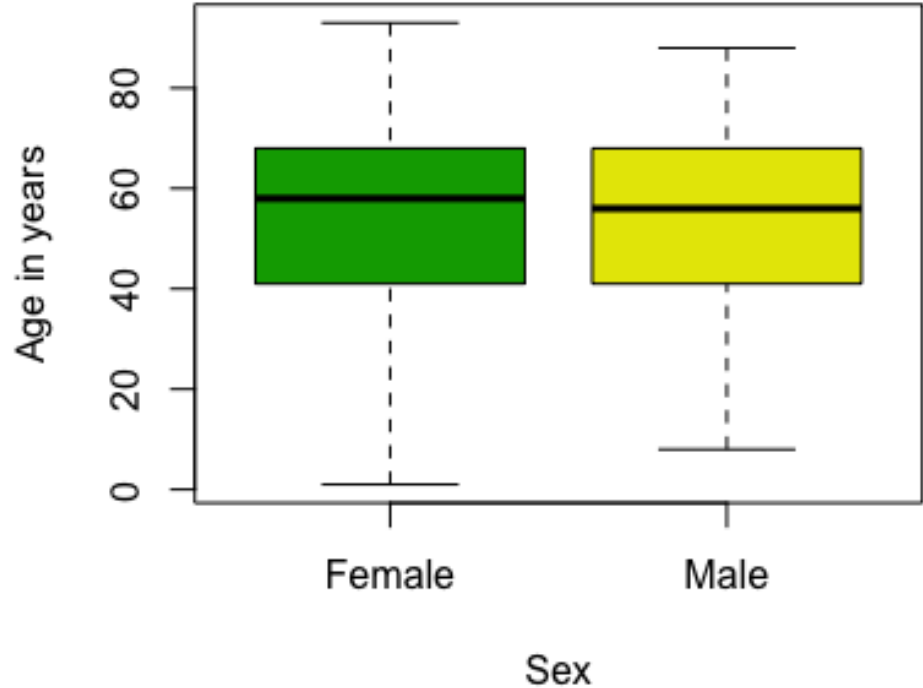
1240 Survey responses  
(2661 request)

Characteristic	
Mean age	53 years
Percent female	53%
Mean years education	15.7
Percent LatinX	5.1% (14.4%)

# Who participated



1240 Survey responses  
(2661 request)



Nine children between 1-17, Max age 93



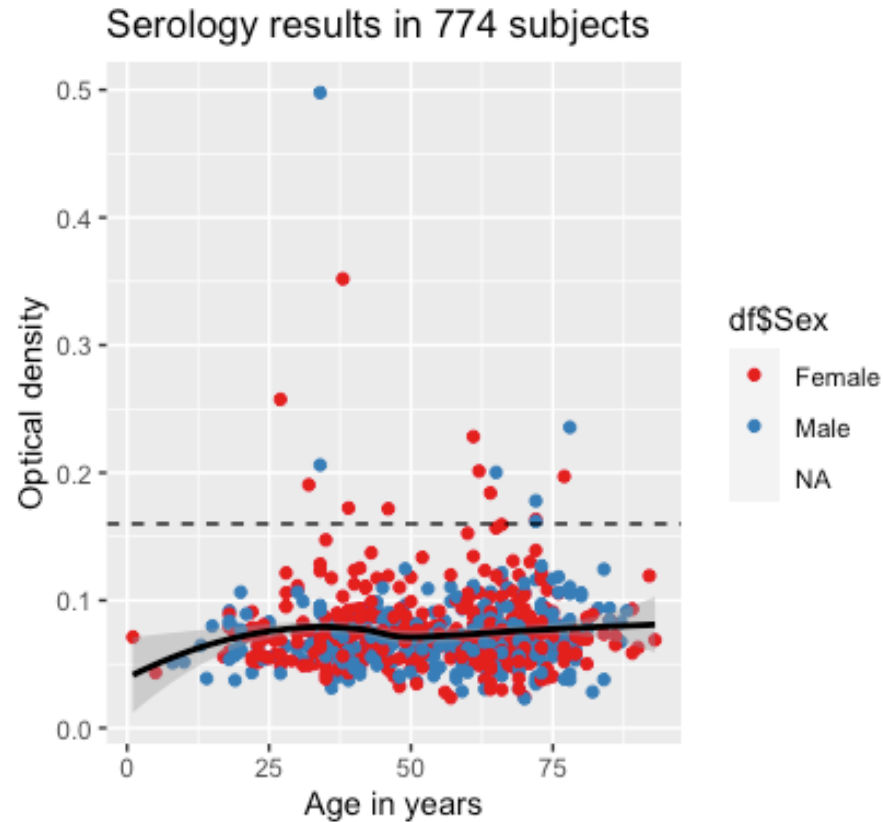
## Who gave blood spots



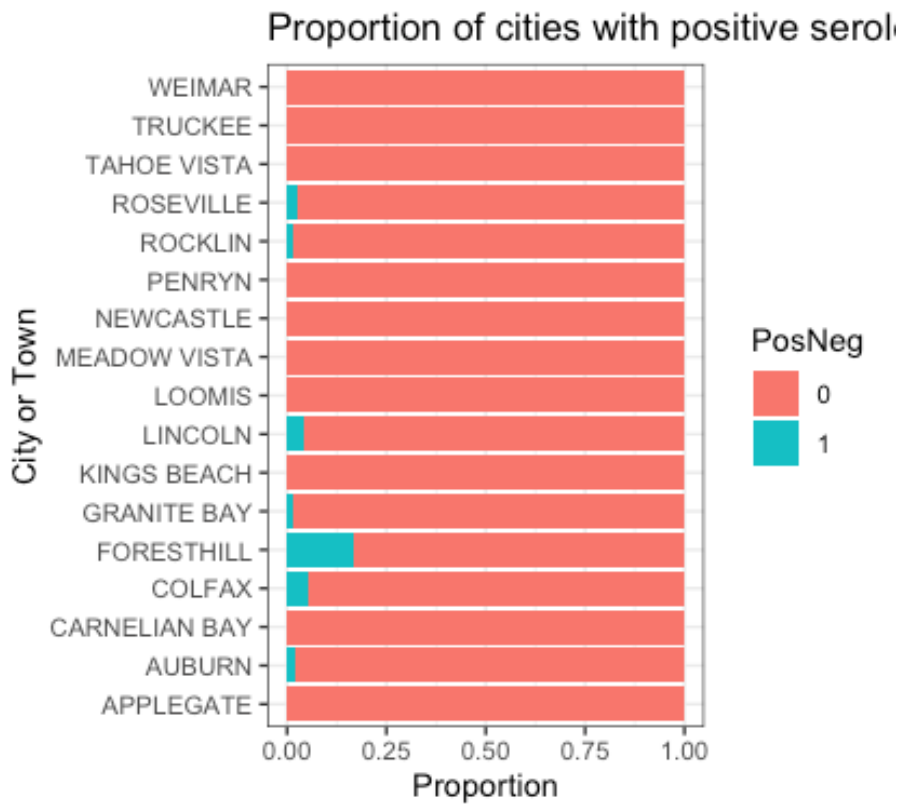
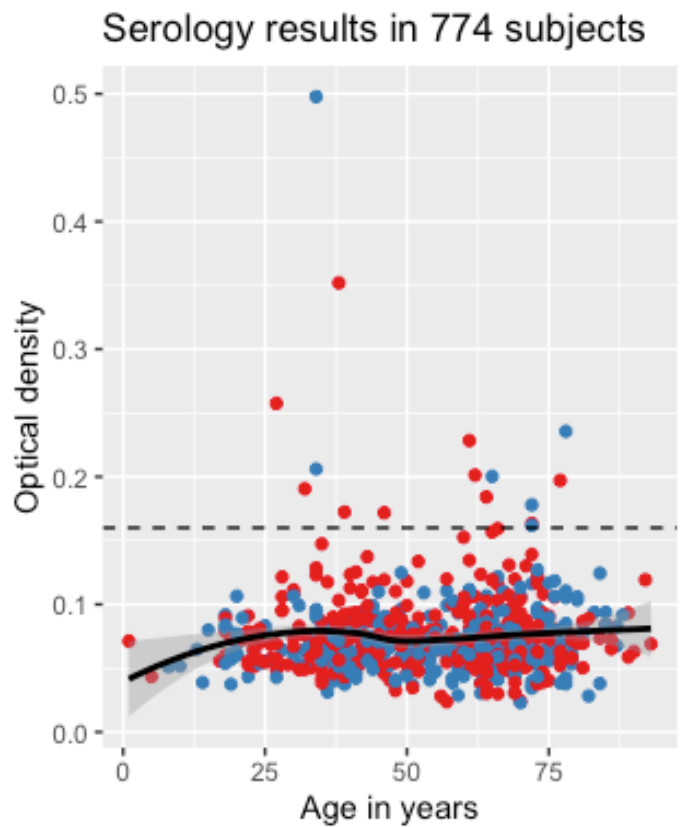
2.3% (19) are seropositive

992 blood tests logged in  
810 blood tests resulted  
(most from November)

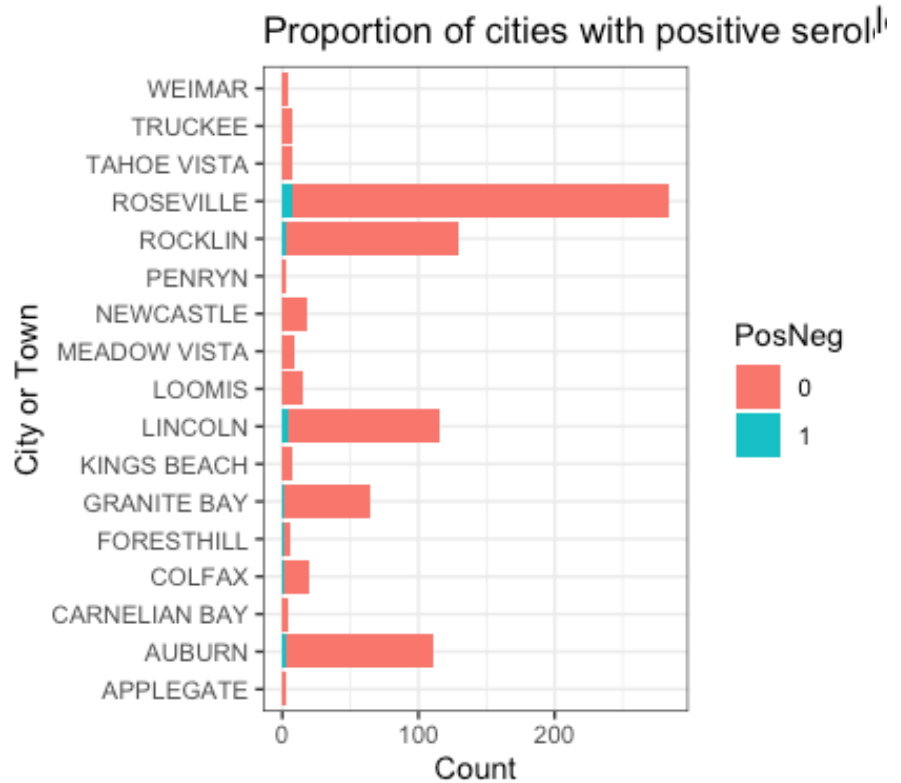
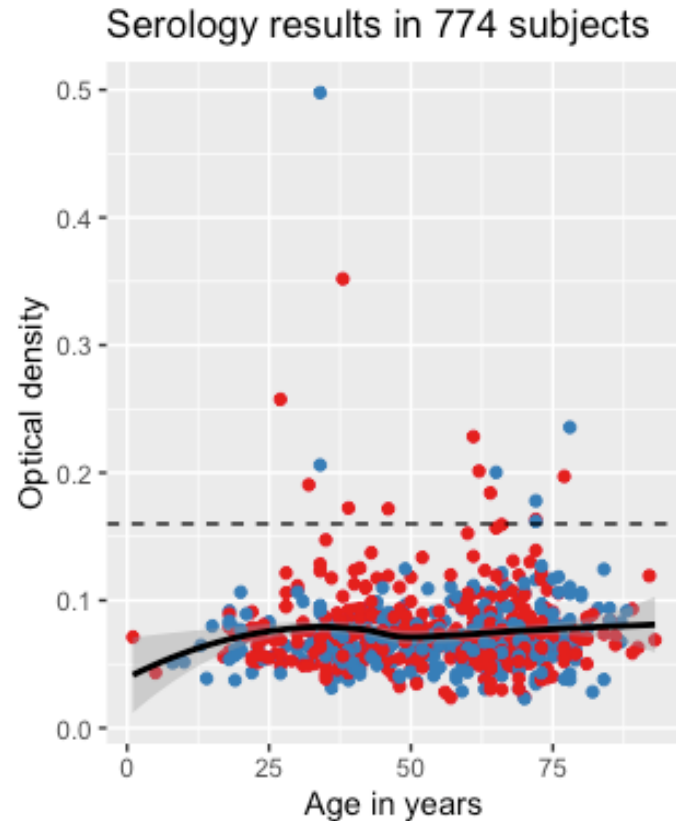
# Who are the people infected



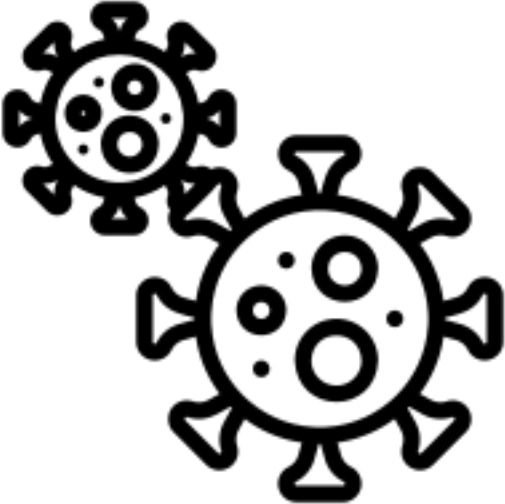
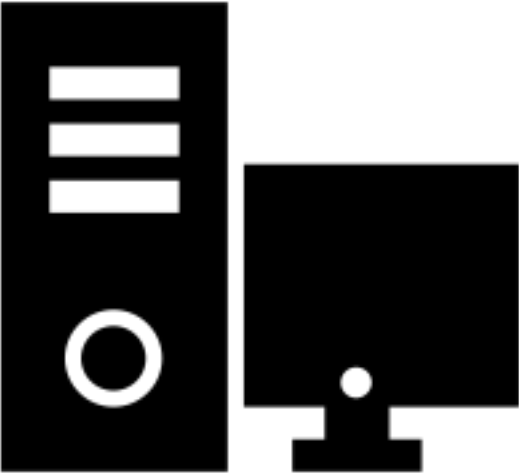
# Who are the people infected



# Who are the people infected

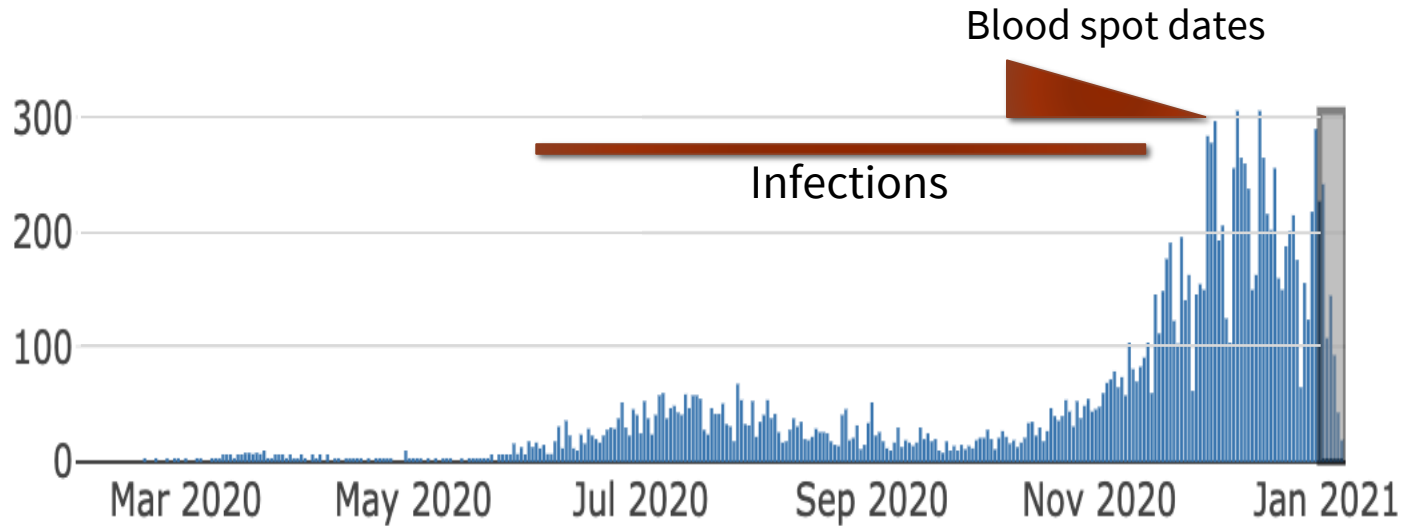


# Obstacles that have slowed us down



# Advantages of delay

New Cases by Episode Date<sup>5</sup>



## Summary

- Approximately 2.3% (1.4-3.6%) of the population tested had been infected by the middle of November
- This number is likely an underestimate and needs statistical adjustment by race, age, sex, SES and date of testing
- 9200 (5600 – 14300) people had been infected by the middle of November (about 2X diagnosed cases)
- With 60 deaths by mid November, the infection-fatality rate would be 0.6%
- These information can help frame roll-out of vaccine and understand efficacy of medical treatments

## Next steps: There is still a lot to do

- Finish up current mailing and serological testing
- Add an extra mailing to enhance diversity of the population and to cover the winter surge in cases
- Complete confirmatory testing with second serology
- Complete epidemiological and statistical analyses
- Complete dashboard for the county