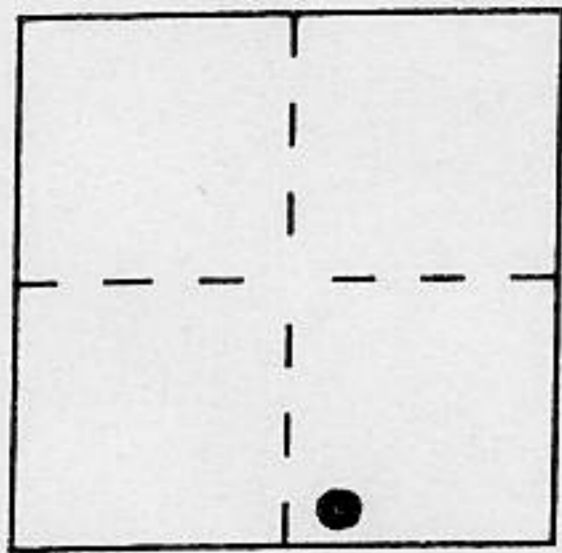


CORNER RECORD

Document Number _____

City of _____ County of PLACER, California

Brief Legal Description LOT 2 BROCKWAY PARK NO. 1
BOOK "D" OF MAPS PAGE 51



SEC. 19
T. 16 N.
R. 18 E.
M. D. M.

CORNER TYPE

Government Corner Control
 Meander Property
 Rancho Other
 Date of Survey 5/10/97

COORDINATES (Optional)

N. _____
 E. _____
 Zone _____ Datum _____
 Elev. _____

Corner — Left as found Found and tagged Established Reestablished Rebuilt

Identification and type of corner found: Evidence used to identify or procedure used to establish or reestablish the corner:

- = FOUND 1/2" REBAR, NO TAG
- = FOUND 5/8" REBAR w/PLAS. CAP L.S. 3422
- = FOUND 1" IRON PIPE (NO TAG) IN REMAINS OF ORIGINAL 2X2 WOOD PILE

A description of the physical condition of the monument as found and as set or reset:

○ = SET 3/4" IRON PIPE w/PLASTIC PLUG L.S. 5549

JN. 9734

SURVEYOR'S STATEMENT

This Corner Record was prepared by me or under my direction in conformance with the Land Surveyors' Act on MAY 12 1997.

Signed Charles R. Sage Jr., L.S. or R.C.E. Number L.S. 5549
LIC. EXPIRES 6-30-2001

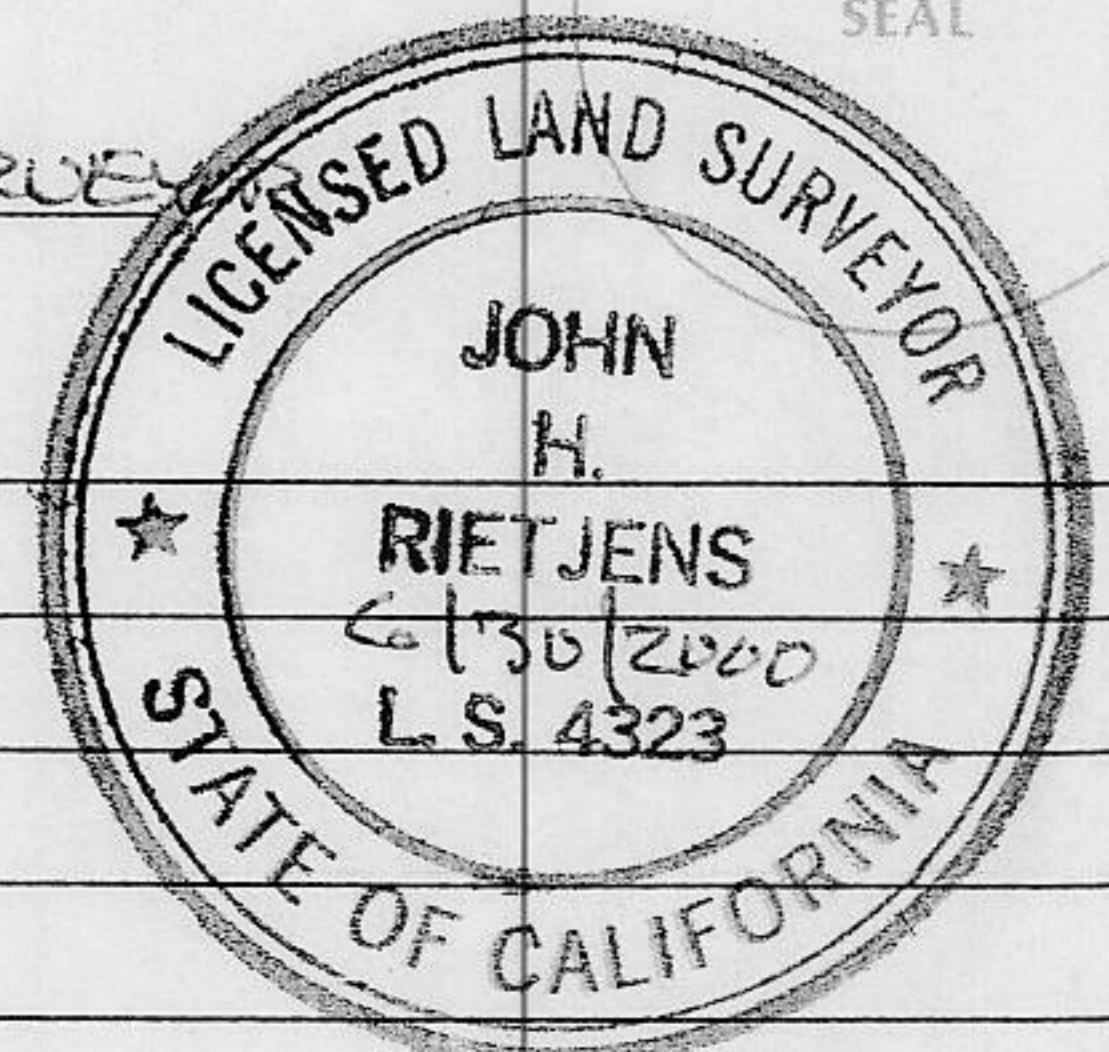


COUNTY SURVEYOR'S STATEMENT

This Corner Record was received JUNE 6 1997 and examined and filed JUNE 10 1997.

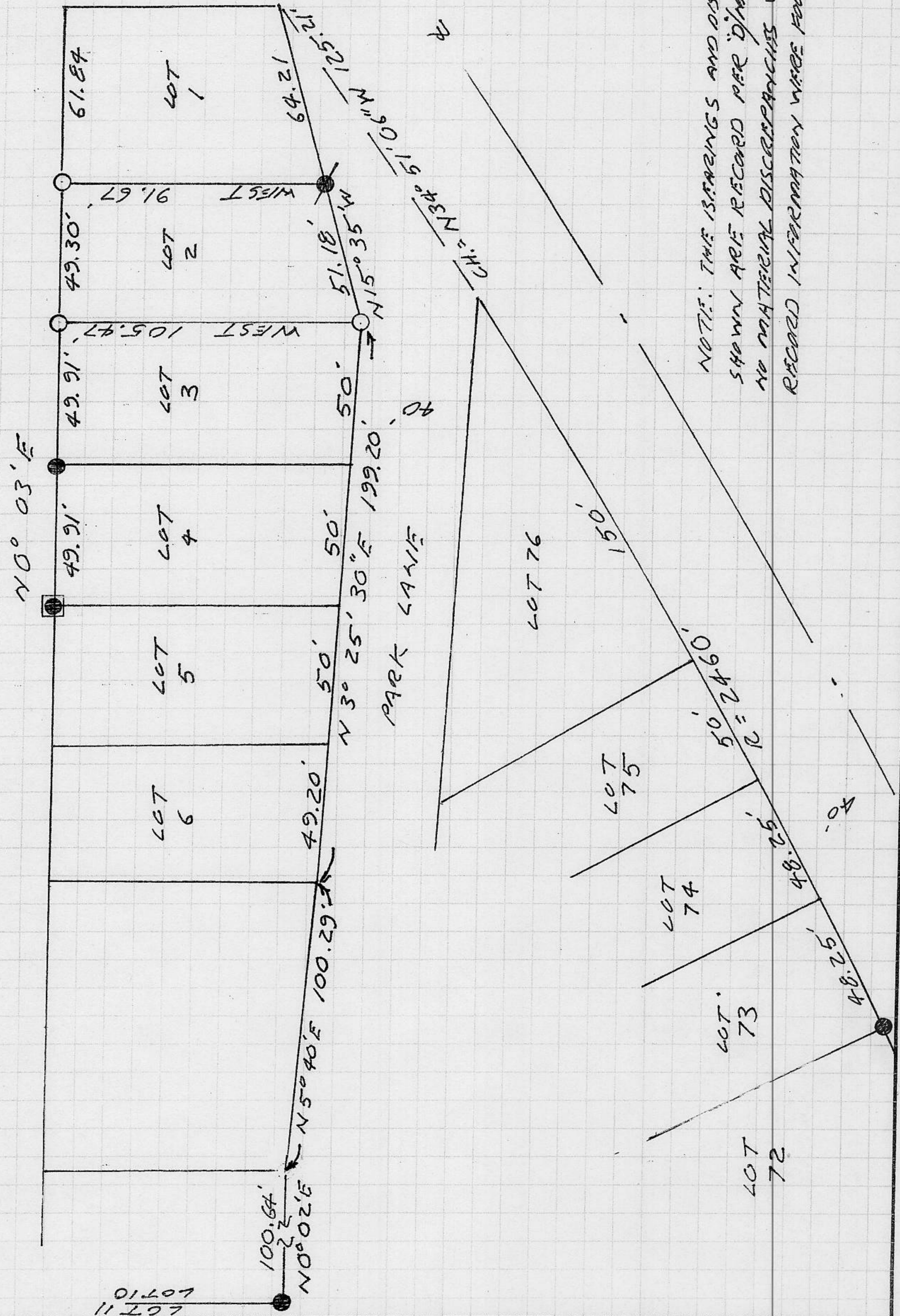
Signed John H. Rietsjens Title COUNTY SURVEYOR

County Surveyor's Comment _____



BOOK 5 CORNER RECORDS PAGE 85

SCALE 1" = 50'



NOTE: THE BEARINGS AND DISTANCES SHOWN ARE RECORDED PER JOURNAL 51. NO MATERIAL DISCREPANCIES WITH RECORD INFORMATION WERE FOUND.