

CORNER RECORD

COUNTY OF PLACER T. 13 N R. 8 E M.D.M. MERIDIAN CALIFORNIA

CORNER TYPE: GOVT. CORNER MEANDER RANCHO CONTROL OTHER

CORNER IDENTIFICATION — DATE OF VISIT 7-22 1991



BOOK 26 OF PARCEL MAPS PAGE 41 (1)
BOOK 24 OF PARCEL MAPS PAGE 7 (2)

CORNER — LEFT AS FOUND FOUND AND TAGGED REESTABLISHED OBLITERATED CORNER REBUILT

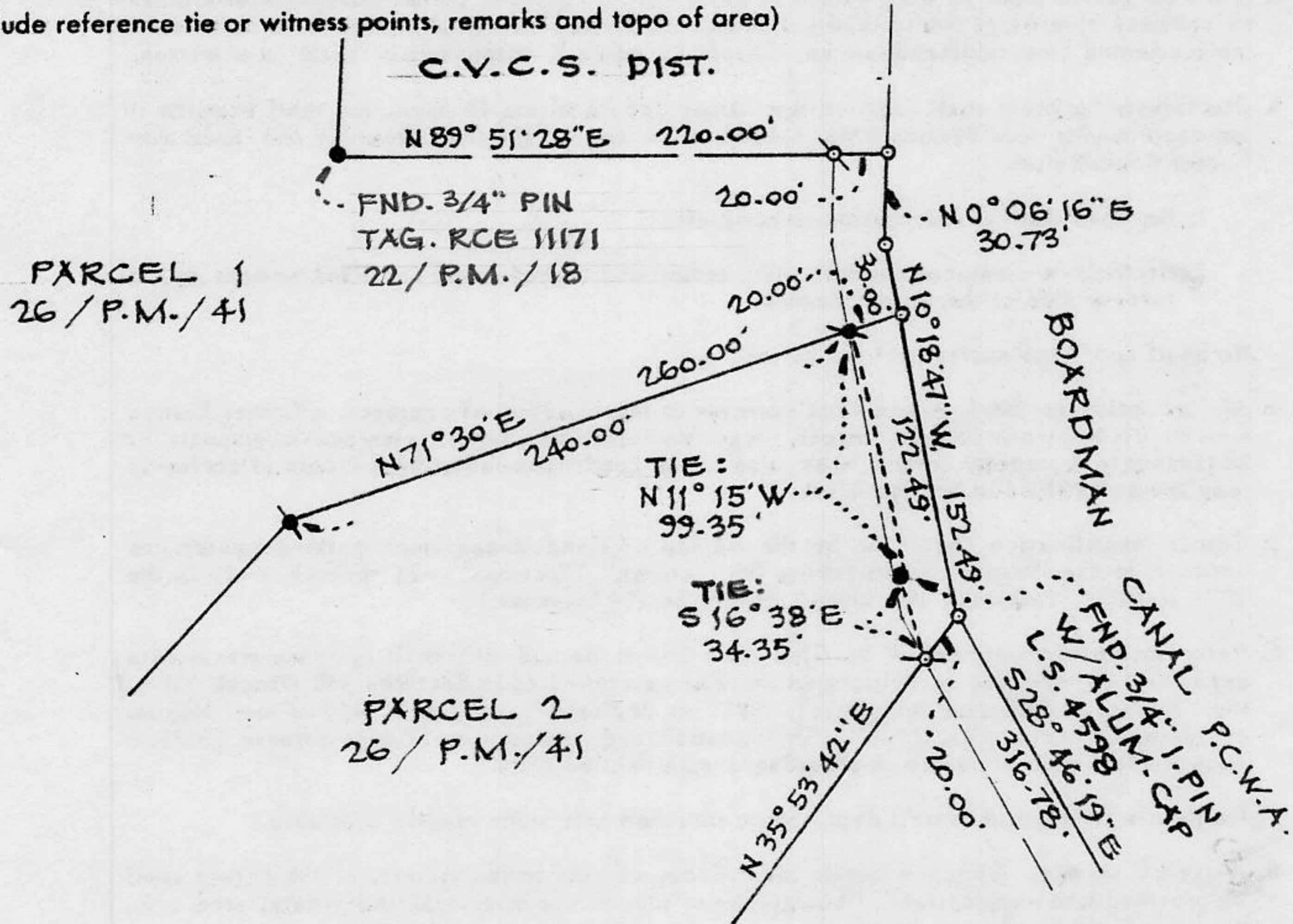
PHYSICAL DESCRIPTION OF CORNER FOUND; EVIDENCE AND METHOD USED TO IDENTIFY OR REESTABLISH

PHYSICAL DESCRIPTION OF MONUMENTS REBUILT OR PERPETUATED

- SET 3/4" IRON PIN TAGGED L.S. 3422
- FOUND 3/4" IRON PIN WITH ALUMINUM CAP STAMPED L.S. 4598 (1989 (1))
- FOUND AS NOTED
- NOTHING FOUND OR SET

CALIFORNIA COORDINATE SYSTEM ORDER: FIRST SECOND THIRD
 STATIONS USED: NGS (USC & GS) STATE COUNTY OTHER STATION _____ STATION _____
 ZONE _____ ELEVATION _____ NORTHINGS (Y) _____ EASTINGS (X) _____

SKETCH: (Include reference tie or witness points, remarks and topo of area)



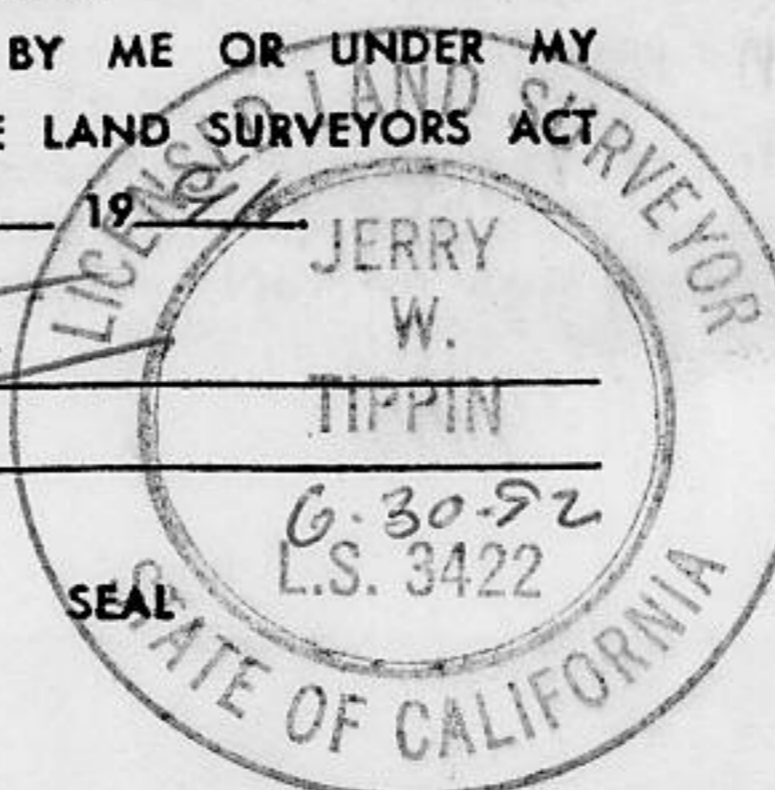
1" = 100'

SURVEYOR'S CERTIFICATE

THIS CORNER RECORD WAS PREPARED BY ME OR UNDER MY DIRECTION IN CONFORMANCE WITH THE LAND SURVEYORS ACT ON Aug 29 1991

SIGNED: Jerry W. Tippin

L.S. or R.C.E. No.: 3422



COUNTY SURVEYOR'S CERTIFICATE

THE CORNER RECORD WAS RECEIVED SEPT 27 1991
AND EXAMINED AND FILED SEPT 30 1991

BY: John Rubens
TITLE: DEPUTY COUNTY SURVEYOR

DOCUMENT No. _____

STATEMENT ON BACK OF SHEET

YES NO

Book 2, Coroner Records, Pages 95