

CORNER RECORD

COUNTY OF PLACER T. 14N R. 17E MD MERIDIAN CALIFORNIA

CORNER TYPE: GOV'T. CORNER MEANDER RANCHO CONTROL OTHER
 CORNER IDENTIFICATION - DATE OF VISIT MAY 1ST 19 91



LOT 176, CHAMBERLANDS UNIT "E" - BOOK "G" MAPS @ 61

CORNER - LEFT AS FOUND FOUND AND TAGGED REESTABLISHED OBLITERATED CORNER REBUILT

PHYSICAL DESCRIPTION OF CORNER FOUND: EVIDENCE AND METHOD USED TO IDENTIFY OR REESTABLISH _____

● FOUND 1/2" IRON PIN AS INDICATED ON RECORD MAP UNLESS OTHERWISE INDICATED.

PHYSICAL DESCRIPTION OF MONUMENTS REBUILT OR PERPETUATED _____

○ SET 5/8" & REBAR, WITH YELLOW PLASTIC CAP STAMPED "BUSWELL, CA. PLS 5886"

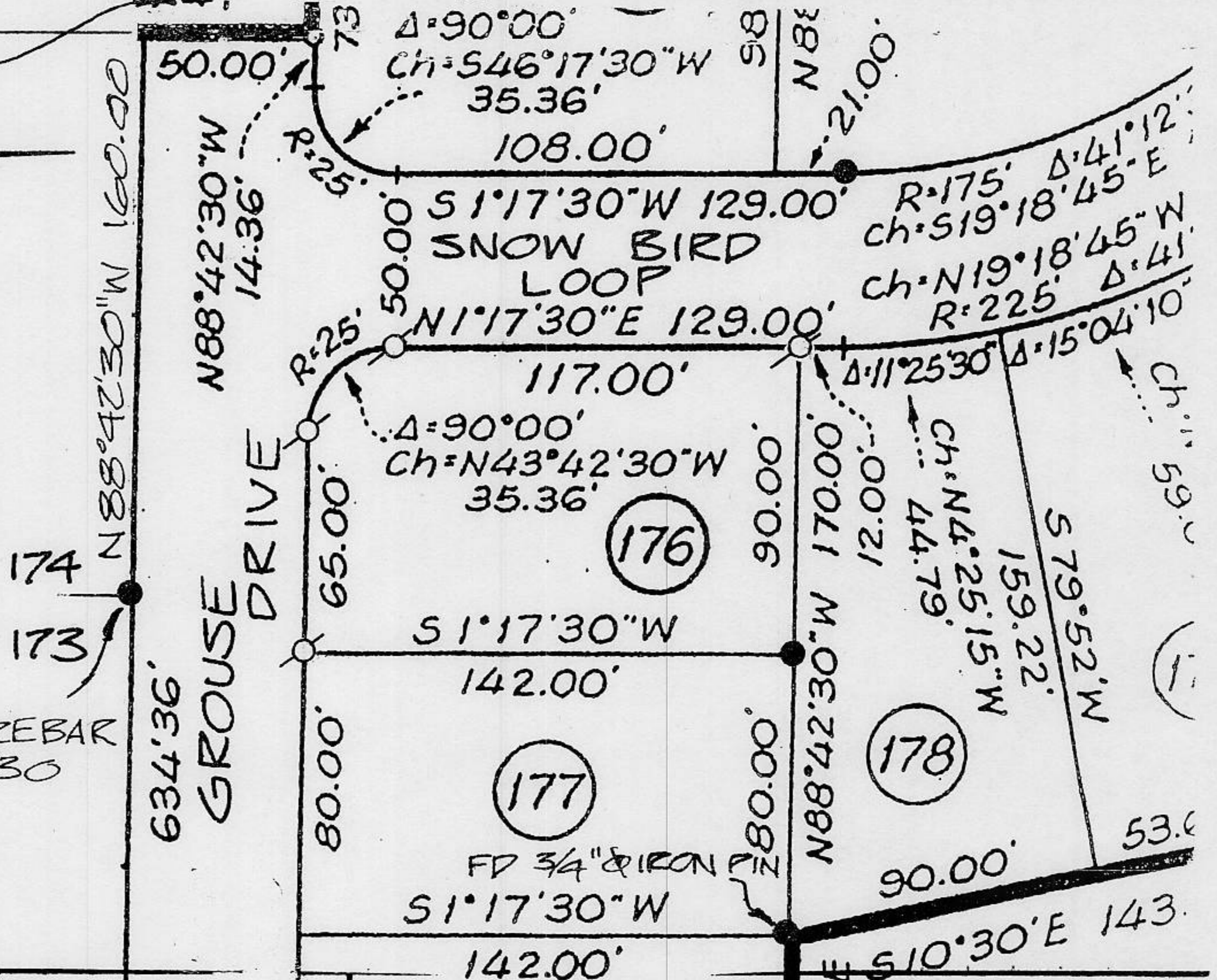
CALIFORNIA COORDINATE SYSTEM ORDER: FIRST SECOND THIRD
 STATIONS USED: NGS (USC & GS) STATE COUNTY OTHER STATION _____ STATION _____
 ZONE _____ ELEVATION _____

N 1° 17' 30" E

NOT TO SCALE



FD. 5/8" REBAR
L.S. 6230



SURVEYOR'S CERTIFICATE

THIS CORNER RECORD WAS PREPARED BY ME OR UNDER MY DIRECTION IN CONFORMANCE WITH THE LAND SURVEYORS ACT ON MAY 2ND 19 91

SIGNED: Thomas C. Buswell

L.S. or R.C.E. No.: 5886

SEAL

COUNTY SURVEYOR'S CERTIFICATE

THIS CORNER RECORD WAS RECEIVED 6/27 19 91
 AND EXAMINED AND FILED 6/28 19 91

BY: Dee Rubens
 TITLE: DEPUTY COUNTY SURVEYOR

DOCUMENT No. _____
 STATEMENT ON BACK OF SHEET

YES NO

BOOK 2, CORNER RECORDS, PAGES 53