

CORNER RECORD

COUNTY OF PLACER T. 15N R. 16E M.D. MERIDIAN CALIFORNIA

CORNER TYPE: GOV'T. CORNER  MEANDER  RANCHO  CONTROL  OTHER

CORNER IDENTIFICATION - DATE OF VISIT SEPTEMBER 19 1990



LOT 34, TAHOE SWISS VILLAGE TRACT NO. 3, H M 33

CORNER - LEFT AS FOUND  FOUND AND TAGGED  REESTABLISHED OBLITERATED CORNER  REBUILT

PHYSICAL DESCRIPTION OF CORNER FOUND: EVIDENCE AND METHOD USED TO IDENTIFY OR REESTABLISH

● ~ FD. 1/2" IRON PIN WITH COPPER SLEEVE STAMPED  
L.S. 2515, UNLESS OTHERWISE INDICATED.

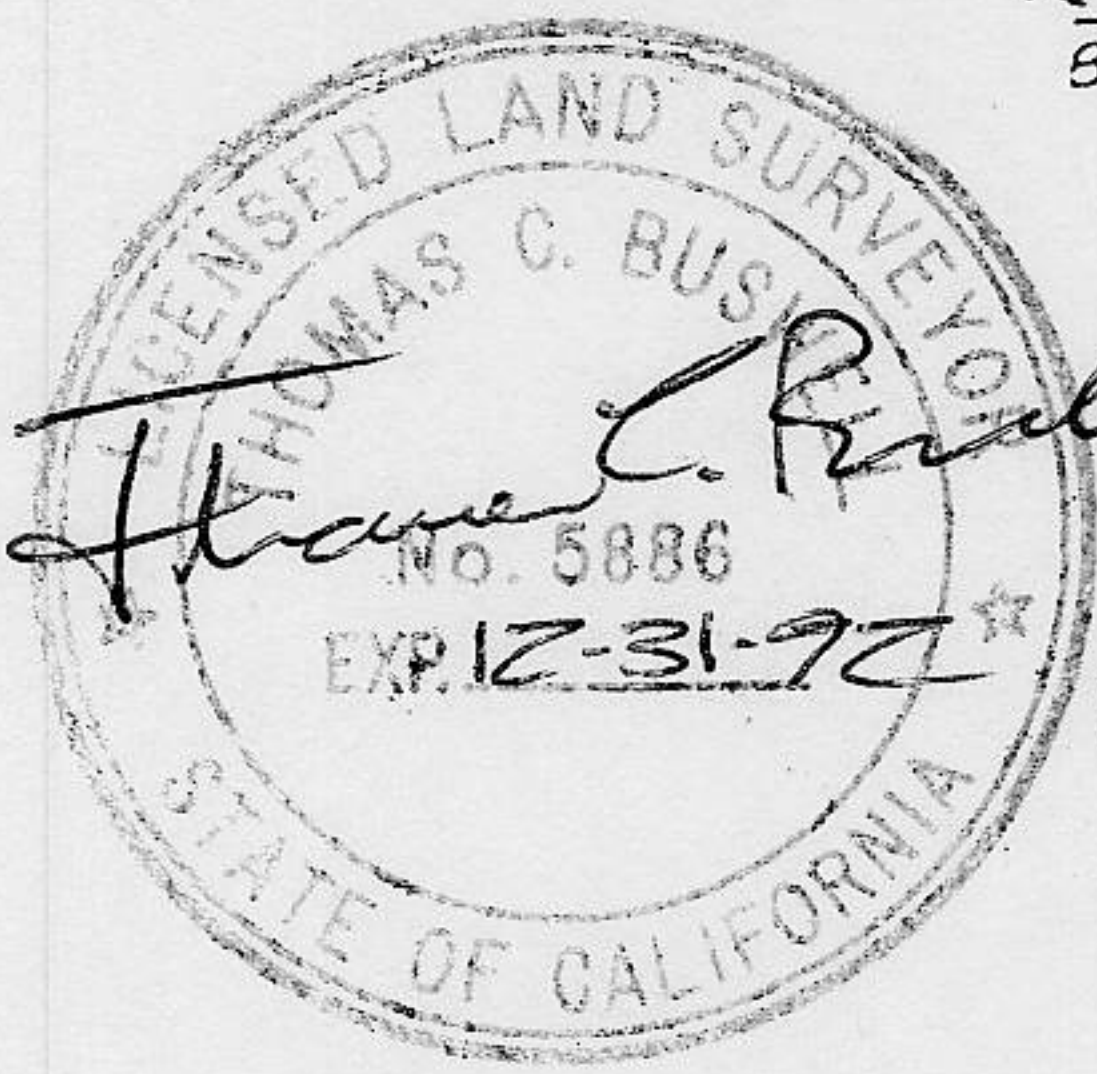
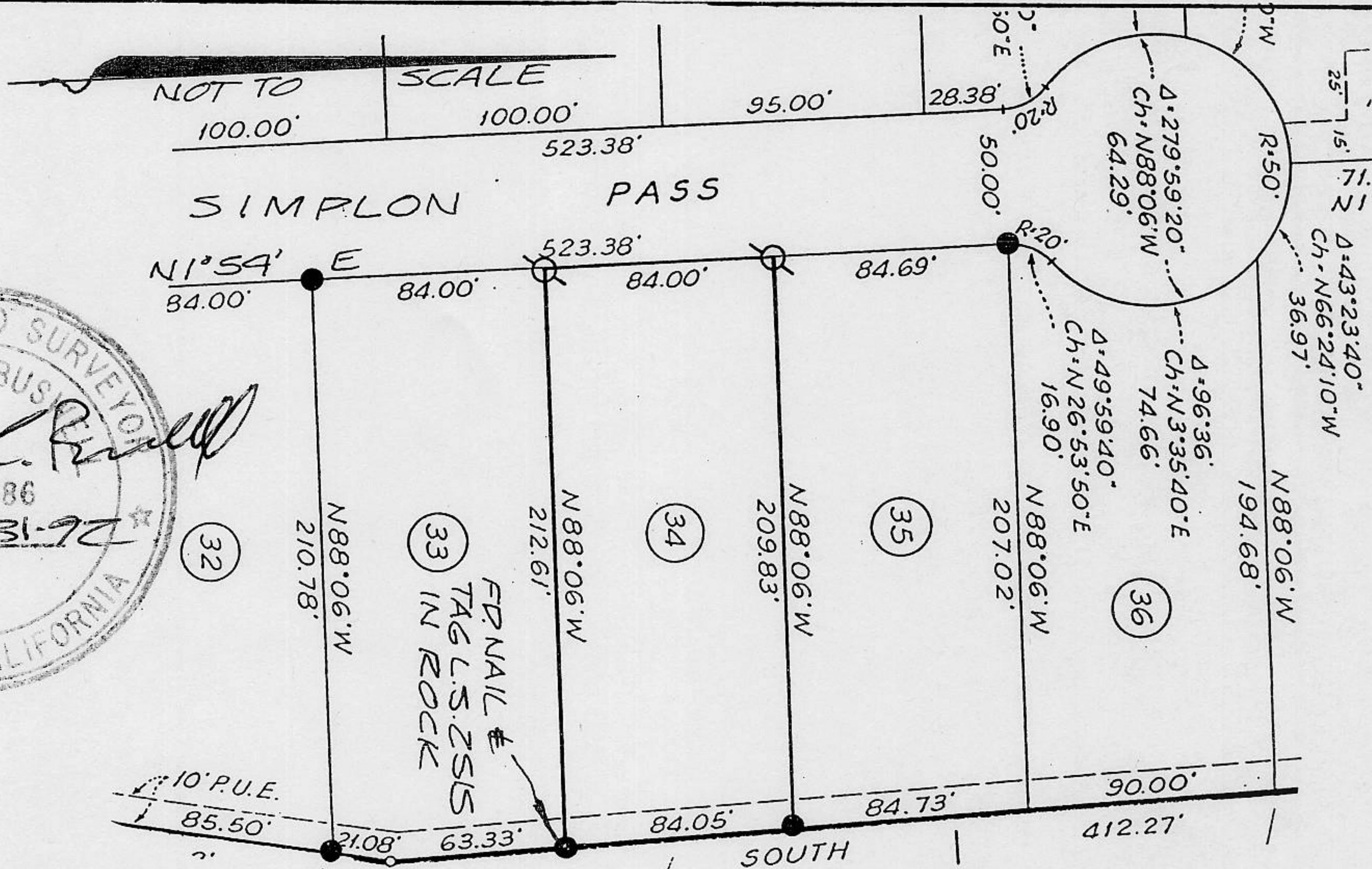
PHYSICAL DESCRIPTION OF MONUMENTS REBUILT OR PERPETUATED

○ ~ SET 5/8" REBAR WITH YELLOW PLASTIC CAP STAMPED  
L.S. 5886

CALIFORNIA COORDINATE SYSTEM ORDER: FIRST  SECOND  THIRD  NOT APPLICABLE

STATIONS USED: NGS (USC & GS)  STATE  COUNTY  OTHER  STATION \_\_\_\_\_ STATION \_\_\_\_\_

ZONE \_\_\_\_\_ ELEVATION \_\_\_\_\_ NORTHINGS (Y) \_\_\_\_\_ EASTINGS (X) \_\_\_\_\_



THIS CORNER RECORD WAS PREPARED BY ME OR UNDER MY DIRECTION IN CONFORMANCE WITH THE LAND SURVEYORS ACT ON OCTOBER 1ST 1990

SIGNED: Thomas C. Busby

L.S. or R.C.E. No. 5886

SEAL

THIS CORNER RECORD WAS RECEIVED 6/27/91 AND EXAMINED AND FILED 6/28 1991

BY: John Rubens  
TITLE: DEPUTY COUNTY SURVEYOR

DOCUMENT No. \_\_\_\_\_

STATEMENT ON BACK OF SHEET

YES  NO