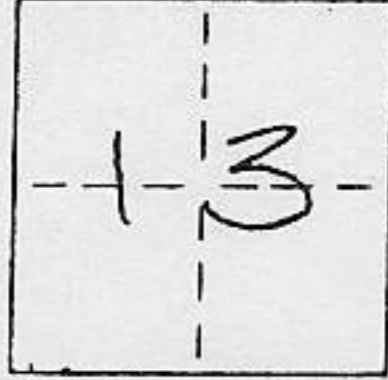


**CORNER RECORD**

COUNTY OF PLACER T. 15N R. 16E M.D. MERIDIAN CALIFORNIA

CORNER TYPE: GOV'T. CORNER  MEANDER  RANCHO  CONTROL  OTHER   
 CORNER IDENTIFICATION - DATE OF VISIT AUGUST 27, 1990



LOT 45, TAHOE WOODS UNIT NO. 1, BOOK "I" MAPS 30

CORNER - LEFT AS FOUND  FOUND AND TAGGED  REESTABLISHED OBLITERATED CORNER  REBUILT

PHYSICAL DESCRIPTION OF CORNER FOUND: EVIDENCE AND METHOD USED TO IDENTIFY OR REESTABLISH

● FOUND 1/2" IRON PIN R.C.E. 9033 UNLESS OTHERWISE INDICATED.

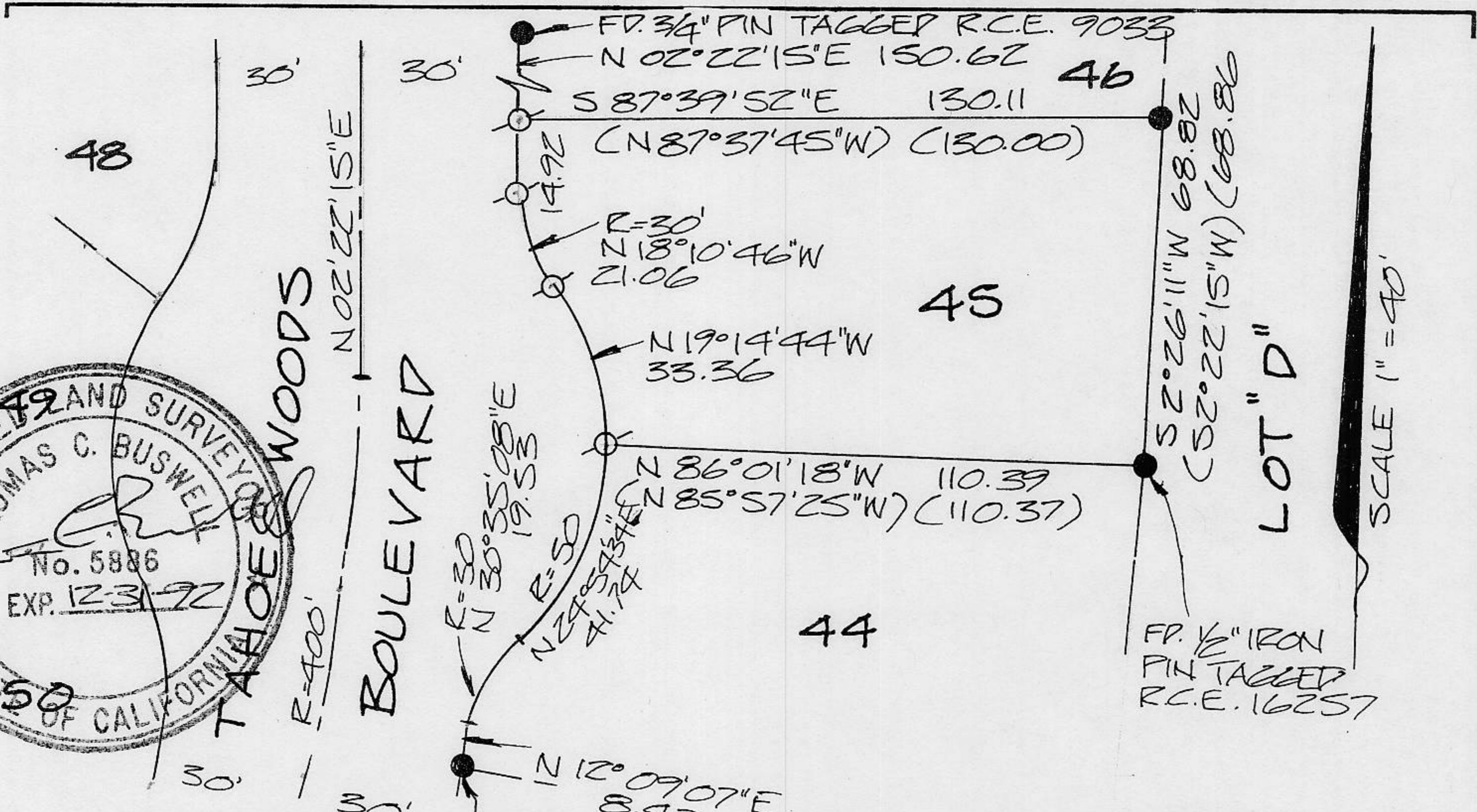
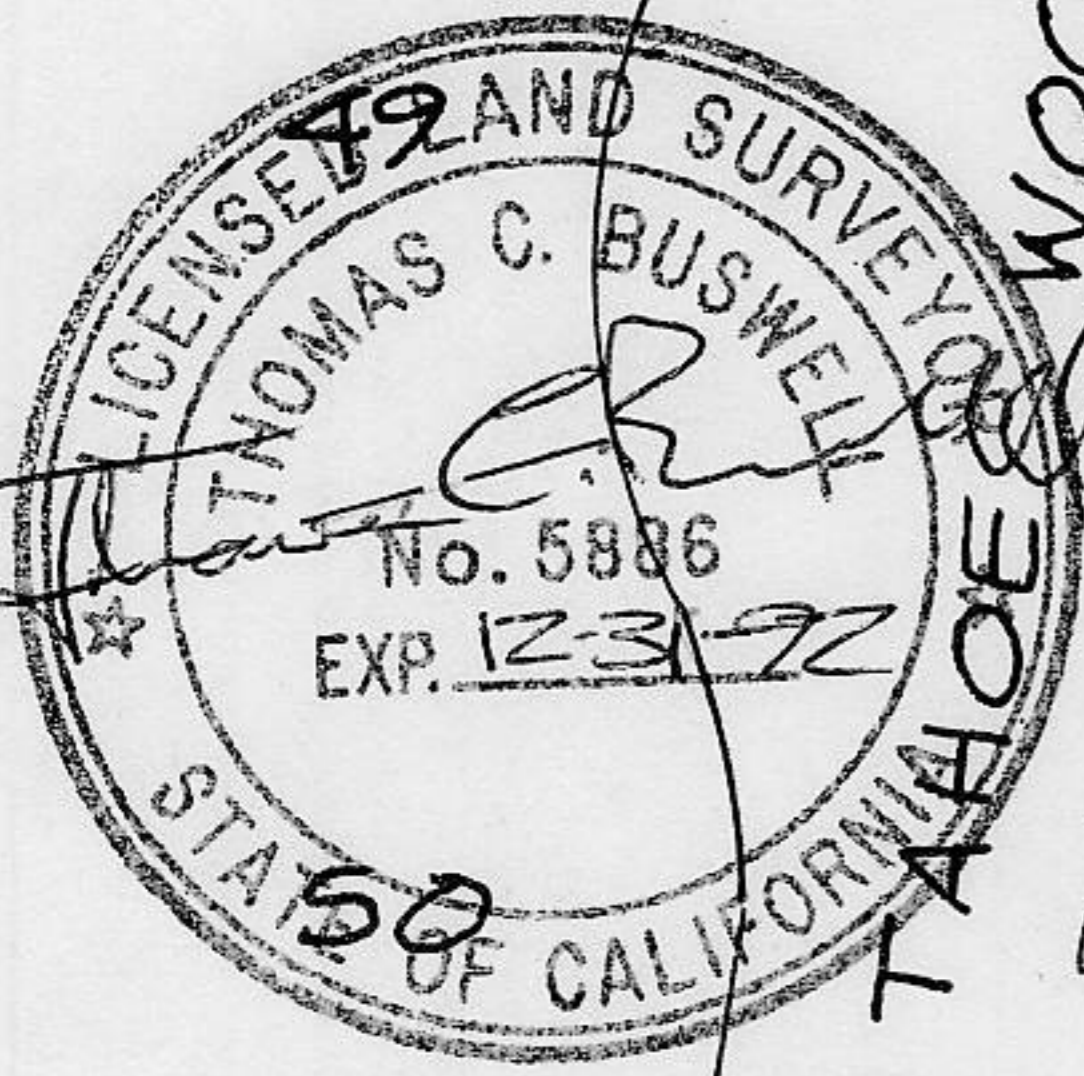
PHYSICAL DESCRIPTION OF MONUMENTS REBUILT OR PERPETUATED

○ SET 5/8" REBAR WITH YELLOW PLASTIC CAP STAMPED L.S. 5886

CALIFORNIA COORDINATE SYSTEM ORDER: FIRST  SECOND  THIRD  N/A

STATIONS USED: NGS (USC & GS)  STATE  COUNTY  OTHER  STATION \_\_\_\_\_ STATION \_\_\_\_\_

ZONE \_\_\_\_\_ ELEVATION \_\_\_\_\_ NORTHINGS (Y) \_\_\_\_\_ EASTINGS (X) \_\_\_\_\_



THIS CORNER RECORD WAS PREPARED BY ME OR UNDER MY DIRECTION IN CONFORMANCE WITH THE LAND SURVEYORS ACT ON SEPTEMBER 30, 1990

SIGNED: Thomas C. Buswell

L.S. or R.C.E. No.: 5886

THIS CORNER RECORD WAS RECEIVED 6/27/91 AND EXAMINED AND FILED 6/28 1991

BY: John Rubens TITLE: DEPUTY COUNTY SURVEYOR

DOCUMENT No. \_\_\_\_\_ STATEMENT ON BACK OF SHEET

YES  NO

BOOK 4 CORNER RECORDS, PAGES 1