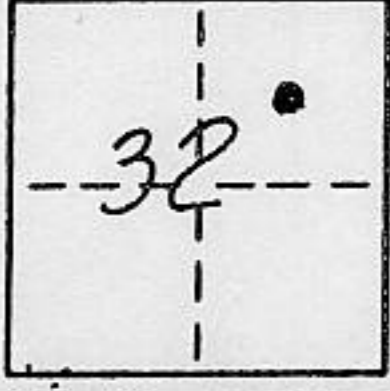


CORNER RECORD

COUNTY OF PLACER T. 16N R. 17E M.D.B. MERIDIAN CALIFORNIA

CORNER TYPE: GOV'T. CORNER  MEANDER  RANCHO  CONTROL  OTHER

CORNER IDENTIFICATION - DATE OF VISIT NOV. 21, 1990



LOT 30 HIGHLANDS SUBDIVISION NO. 2 BK. "F" MAPS PG. 63

CORNER - LEFT AS FOUND  FOUND AND TAGGED  REESTABLISHED OBLITERATED CORNER  REBUILT

PHYSICAL DESCRIPTION OF CORNER FOUND: EVIDENCE AND METHOD USED TO IDENTIFY OR REESTABLISH

• FOUND 1/2" φ IRON PIN, NO TAG

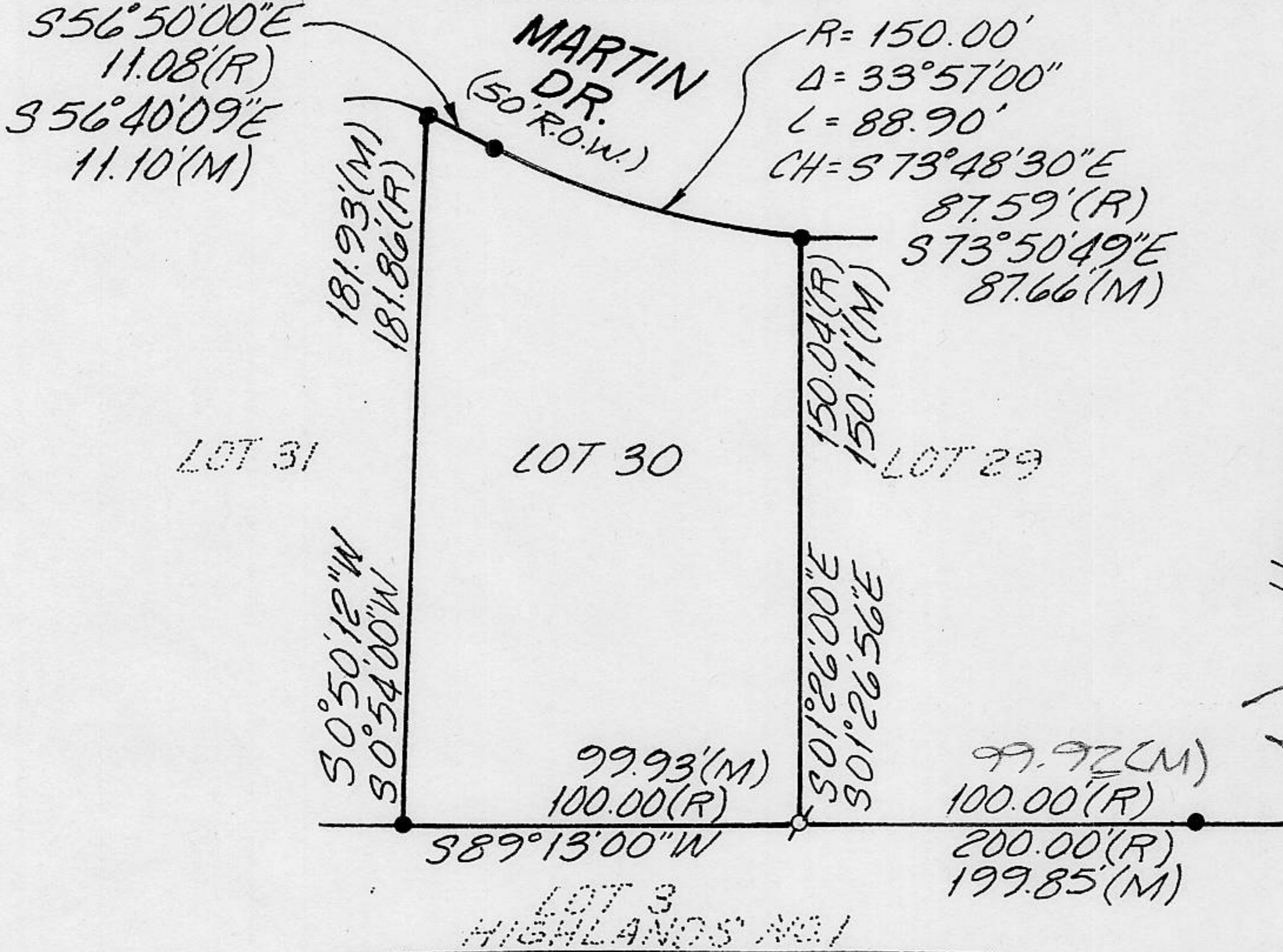
PHYSICAL DESCRIPTION OF MONUMENTS REBUILT OR PERPETUATED

• SET 5/8" φ REBAR w/ YELLOW PLASTIC CAP L.S. 5886

CALIFORNIA COORDINATE SYSTEM ORDER: FIRST  SECOND  THIRD  N/A

STATIONS USED: NGS (USC & GS)  STATE  COUNTY  OTHER  STATION \_\_\_\_\_ STATION \_\_\_\_\_

ZONE \_\_\_\_\_ ELEVATION \_\_\_\_\_ NORTHINGS (Y) \_\_\_\_\_ EASTINGS (X) \_\_\_\_\_



(R) - RECORD  
(M) - MEASURED

SCALE: 1"=60'



SURVEYOR'S CERTIFICATE

THIS CORNER RECORD WAS PREPARED BY ME OR UNDER MY DIRECTION IN CONFORMANCE WITH THE LAND SURVEYORS ACT ON NOV. 26, 1990

SIGNED: Thomas C. Buswell

L.S. or R.C.E. No.: L.S. 5886

SEAL

COUNTY SURVEYOR'S CERTIFICATE

THIS CORNER RECORD WAS RECEIVED 6/27 1991 AND EXAMINED AND FILED 6/28 1991

BY: John Ruben  
TITLE: DEPUTY COUNTY SURVEYOR

DOCUMENT No. \_\_\_\_\_  
STATEMENT ON BACK OF SHEET

YES  NO