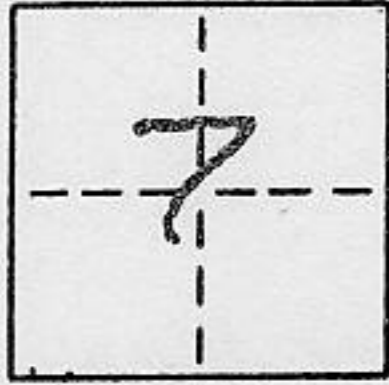


CORNER RECORD

COUNTY OF PLACER T. 14N R. 17E MD. MERIDIAN CALIFORNIA

CORNER TYPE: GOV'T. CORNER MEANDER RANCHO CONTROL OTHER

CORNER IDENTIFICATION - DATE OF VISIT 11-30 19 90



LOT 80, CHAMBERLANDS UNIT B, BOOK "F" MAPS 48

CORNER - LEFT AS FOUND FOUND AND TAGGED REESTABLISHED OBLITERATED CORNER REBUILT

PHYSICAL DESCRIPTION OF CORNER FOUND: EVIDENCE AND METHOD USED TO IDENTIFY OR REESTABLISH _____

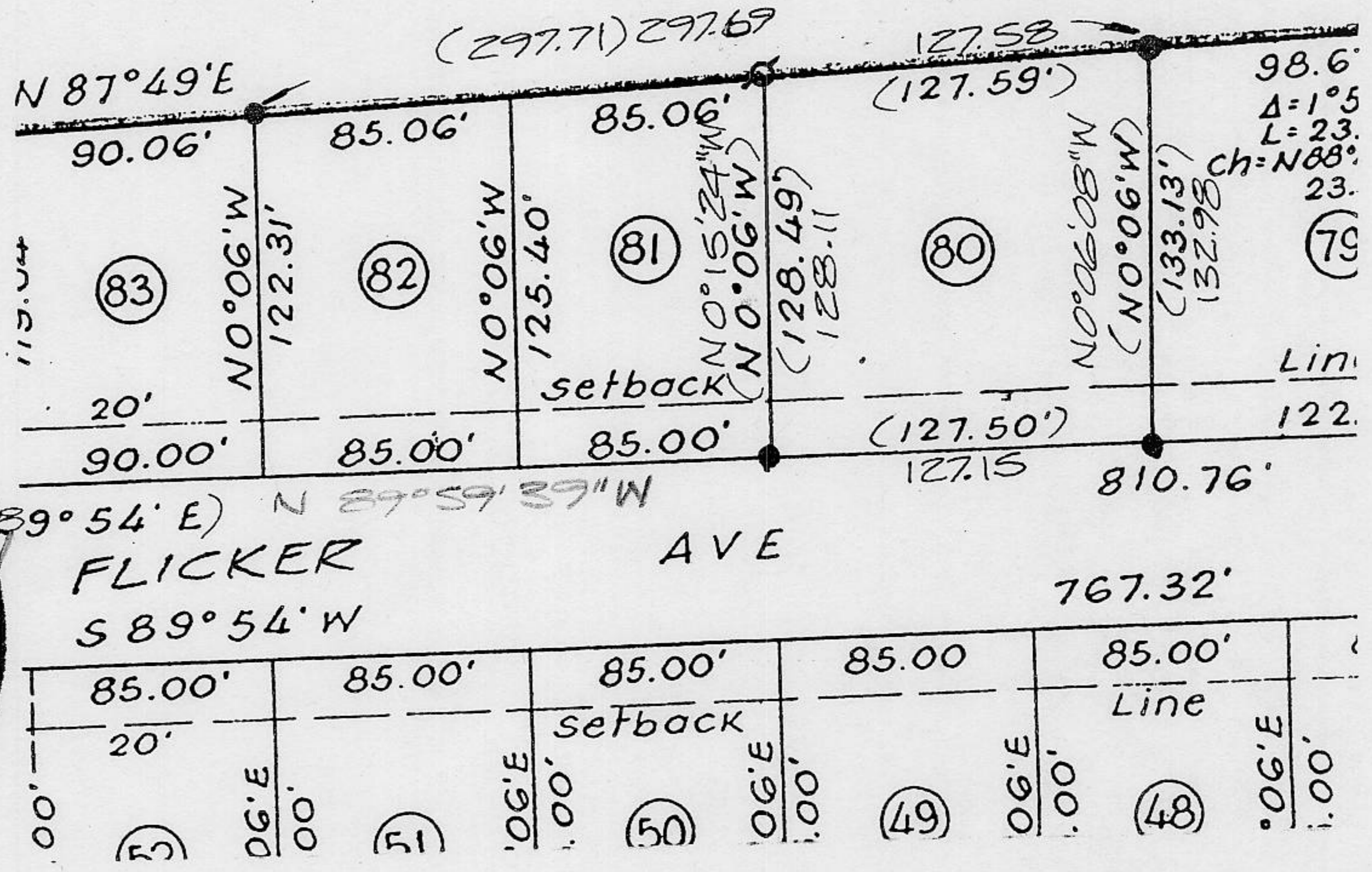
~ FD. 1/2" IRON PIN, NO TAG AS PER BOOK "F" MAPS PAGE 48

PHYSICAL DESCRIPTION OF MONUMENTS REBUILT OR PERPETUATED _____

~ SET 5/8" REBAR WITH YELLOW PLASTIC CAP STAMPED L.S. 5886

CALIFORNIA COORDINATE SYSTEM ORDER: FIRST SECOND THIRD NOT APPLICABLE
STATIONS USED: NGS (USC & GS) STATE COUNTY OTHER STATION _____ STATION _____
ZONE _____ ELEVATION _____ NORTHINGS (Y) _____ EASTINGS (X) _____

NOT TO SCALE



SURVEYOR'S CERTIFICATE

THIS CORNER RECORD WAS PREPARED BY ME OR UNDER MY DIRECTION IN CONFORMANCE WITH THE LAND SURVEYORS ACT ON 12-3 19 90

SIGNED: Thomas C. Buswell

L.S. or R.C.E. No.: 5886

SEAL

COUNTY SURVEYOR'S CERTIFICATE

THIS CORNER RECORD WAS RECEIVED 6/27 1991
AND EXAMINED AND FILED 6/28 1991

BY: John Rubino
TITLE: DEPUTY COUNTY SURVEYOR

DOCUMENT No. _____
STATEMENT ON BACK OF SHEET

YES NO