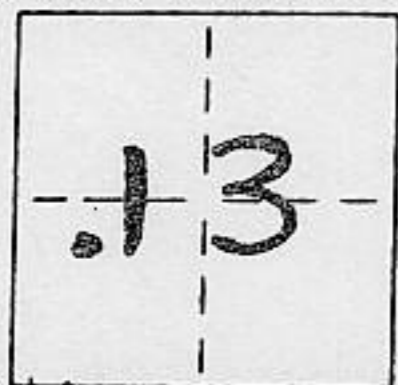


**CORNER RECORD**

COUNTY OF PLACER T. 15N R. 16E M.P. MER. AN CALIFORNIA

CORNER TYPE: GOV'T. CORNER  MEANDER  RANCHO  CONTROL  OTHER

CORNER IDENTIFICATION - DATE OF VISIT AUGUST 1990



LOT 202, TALMONT ESTATES UNIT NO. 2, BOOK 1 M 1

CORNER - LEFT AS FOUND  FOUND AND TAGGED  REESTABLISHED OBLITERATED CORNER  REBUILT

PHYSICAL DESCRIPTION OF CORNER FOUND: EVIDENCE AND METHOD USED TO IDENTIFY OR REESTABLISH

● FOUND 1/2" BAR WITH COPPER SLEEVE STAMPED L.S. 2515

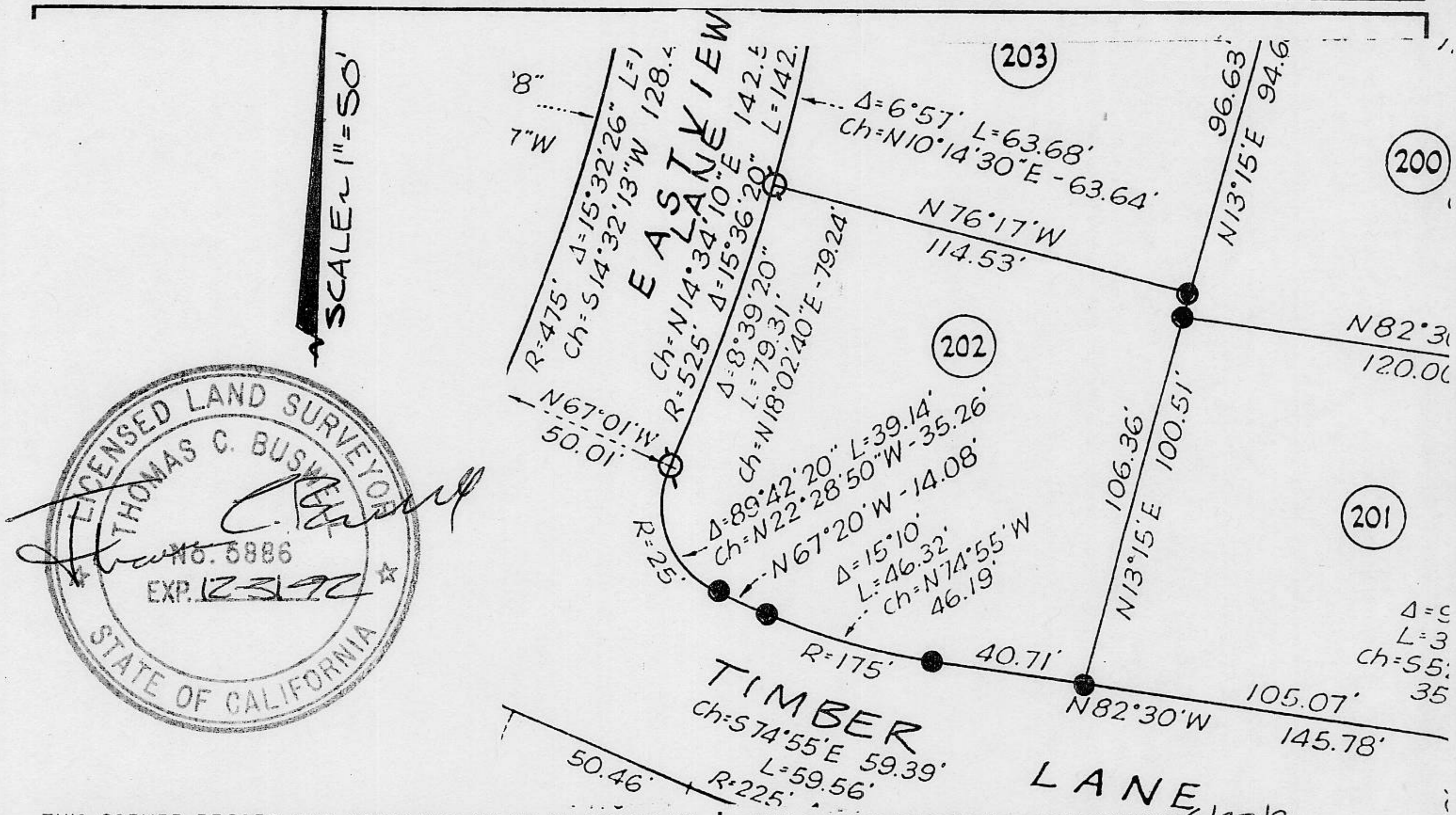
PHYSICAL DESCRIPTION OF MONUMENTS REBUILT OR PERPETUATED

○ SET 5/8" Ø REBAR WITH YELLOW PLASTIC CAP STAMPED L.S. 5886

CALIFORNIA COORDINATE SYSTEM ORDER: FIRST  SECOND  THIRD  **NOT APPLICABLE**

STATIONS USED: NGS (USC & GS)  STATE  COUNTY  OTHER  STATION \_\_\_\_\_ STATION \_\_\_\_\_

ZONE \_\_\_\_\_ ELEVATION \_\_\_\_\_ NORTHINGS (Y) \_\_\_\_\_ EASTINGS (X) \_\_\_\_\_



THIS CORNER RECORD WAS PREPARED BY ME OR UNDER MY DIRECTION IN CONFORMANCE WITH THE LAND SURVEYORS ACT ON 10-14 1990

SIGNED: Thomas C. Busby

L.S. or ~~\_\_\_\_\_~~ No.: 5886

SEAL

THIS CORNER RECORD WAS RECEIVED 6/27/91

AND EXAMINED AND FILED 6/28 1991

BY: John Rudgens

TITLE: DEPUTY COUNTY SURVEYOR

DOCUMENT No. \_\_\_\_\_

STATEMENT ON BACK OF SHEET

YES  NO