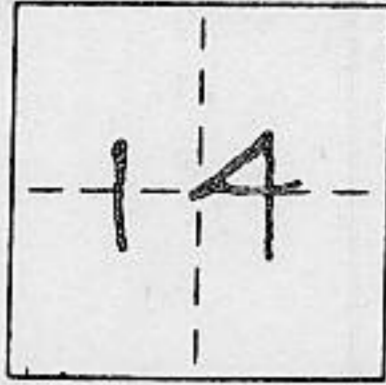


**CORNER RECORD**

COUNTY OF PLACER T. 15N R. 16E M.D. MERIDIAN CALIFORNIA

CORNER TYPE: GOV'T. CORNER  MEANDER  RANCHO  CONTROL  OTHER   
 CORNER IDENTIFICATION - DATE OF VISIT 8-8 1990



**LOT 50, TWIN PEAKS UNIT NO. 2, I M 60**

CORNER - LEFT AS FOUND  FOUND AND TAGGED  REESTABLISHED OBLITERATED CORNER  REBUILT

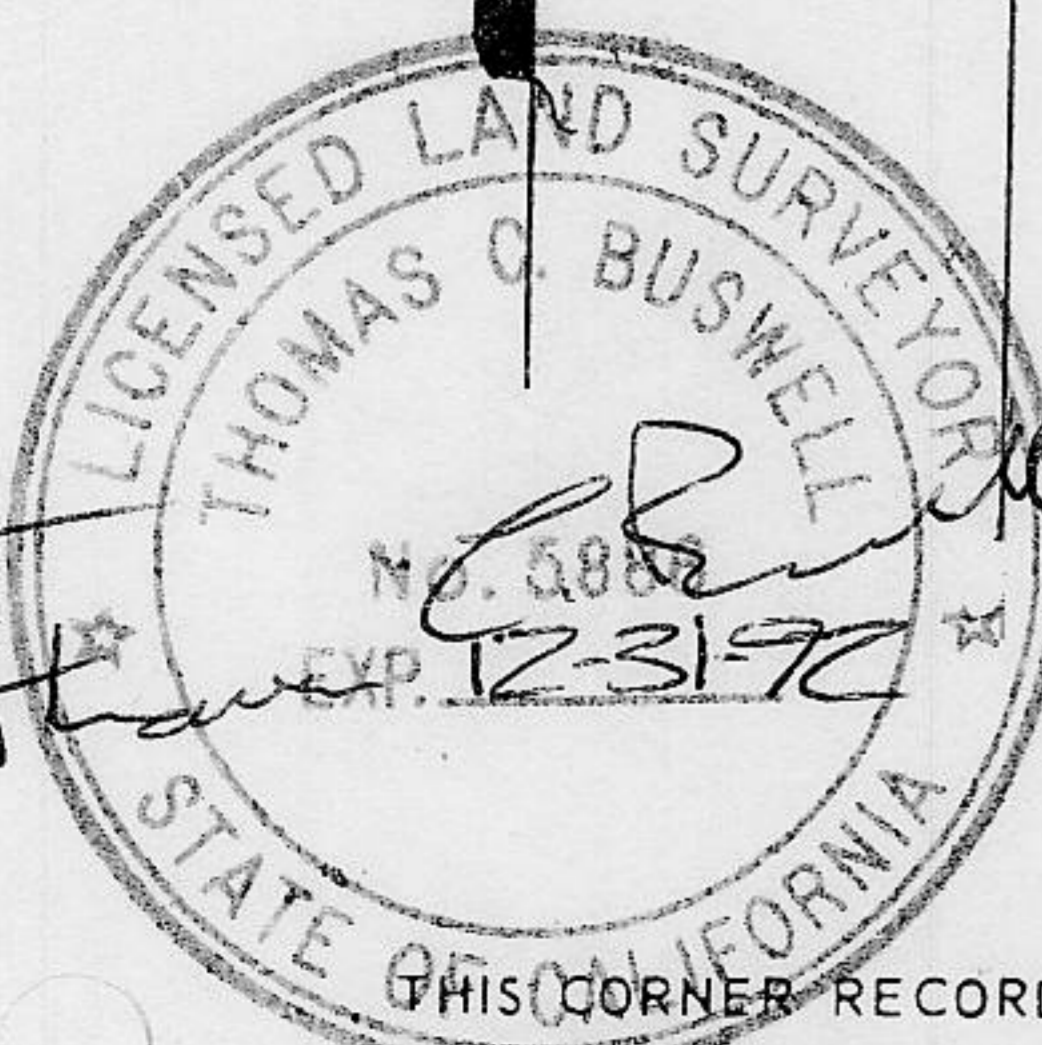
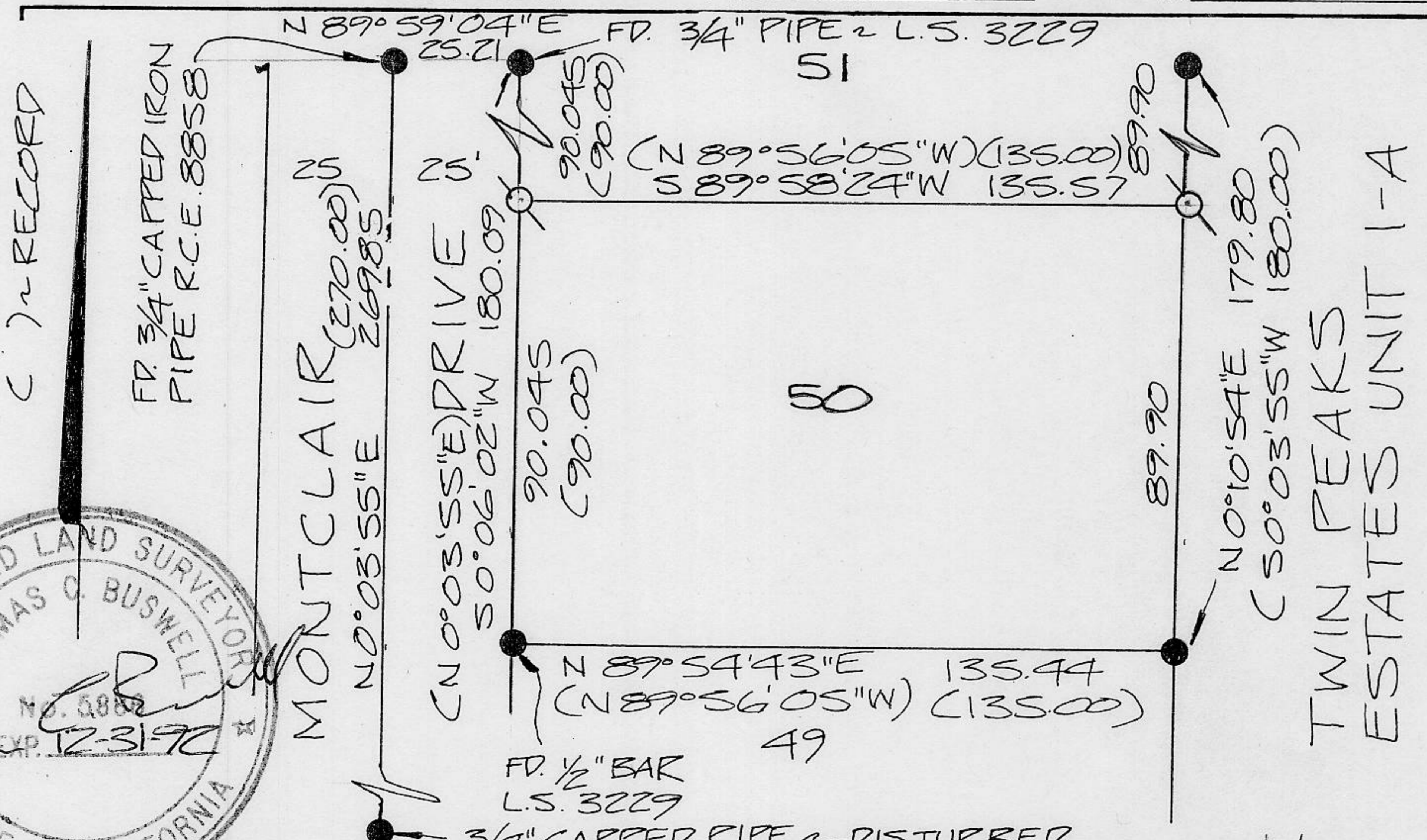
PHYSICAL DESCRIPTION OF CORNER FOUND: EVIDENCE AND METHOD USED TO IDENTIFY OR REESTABLISH

FD 1/2" BAR, NO TAG, UNLESS OTHERWISE INDICATED.

PHYSICAL DESCRIPTION OF MONUMENTS REBUILT OR PERPETUATED

Q SET 5/8" REBAR WITH YELLOW PLASTIC CAP STAMPED L.S. 5886

CALIFORNIA COORDINATE SYSTEM ORDER: FIRST  SECOND  THIRD   
 STATIONS USED: NGS (USC & GS)  STATE  COUNTY  OTHER  STATION \_\_\_\_\_ STATION \_\_\_\_\_  
 ZONE \_\_\_\_\_ ELEVATION \_\_\_\_\_ NORTHINGS (Y) \_\_\_\_\_ EASTINGS (X) \_\_\_\_\_



THIS CORNER RECORD WAS PREPARED BY ME OR UNDER MY DIRECTION IN CONFORMANCE WITH THE LAND SURVEYORS ACT ON 8-19 1990  
 SIGNED: Thomas Q. Buswell  
 L.S. or R.C.E. No.: 5886

THIS CORNER RECORD WAS RECEIVED 7/11/91 AND EXAMINED AND FILED 7/12 1991  
 BY: John Rutgers  
 TITLE: DEPUTY COUNTY SURVEYOR

DOCUMENT No. \_\_\_\_\_ STATEMENT ON BACK OF SHEET YES  NO

BOOK 21 CORNER RECORDS, PAGE 68