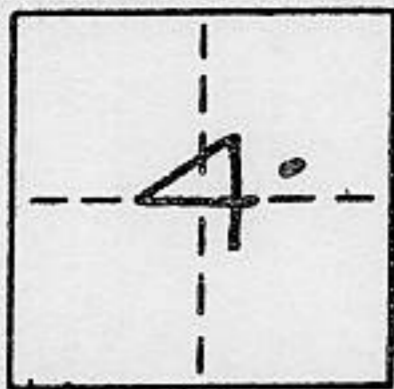


CORNER RECORD

COUNTY OF PLACER T. 15N R. 16E MDB&M MERIDIAN CALIFORNIA  
CORNER TYPE: GOV'T. CORNER  MEANDER  RANCHO  CONTROL  OTHER   
CORNER IDENTIFICATION - DATE OF VISIT 6-13 1991



LOT 344, ALPINE MEADOWS UNIT NO. 10, BOOK J MAPS 13

CORNER - LEFT AS FOUND  FOUND AND TAGGED  REESTABLISHED OBLITERATED CORNER  REBUILT

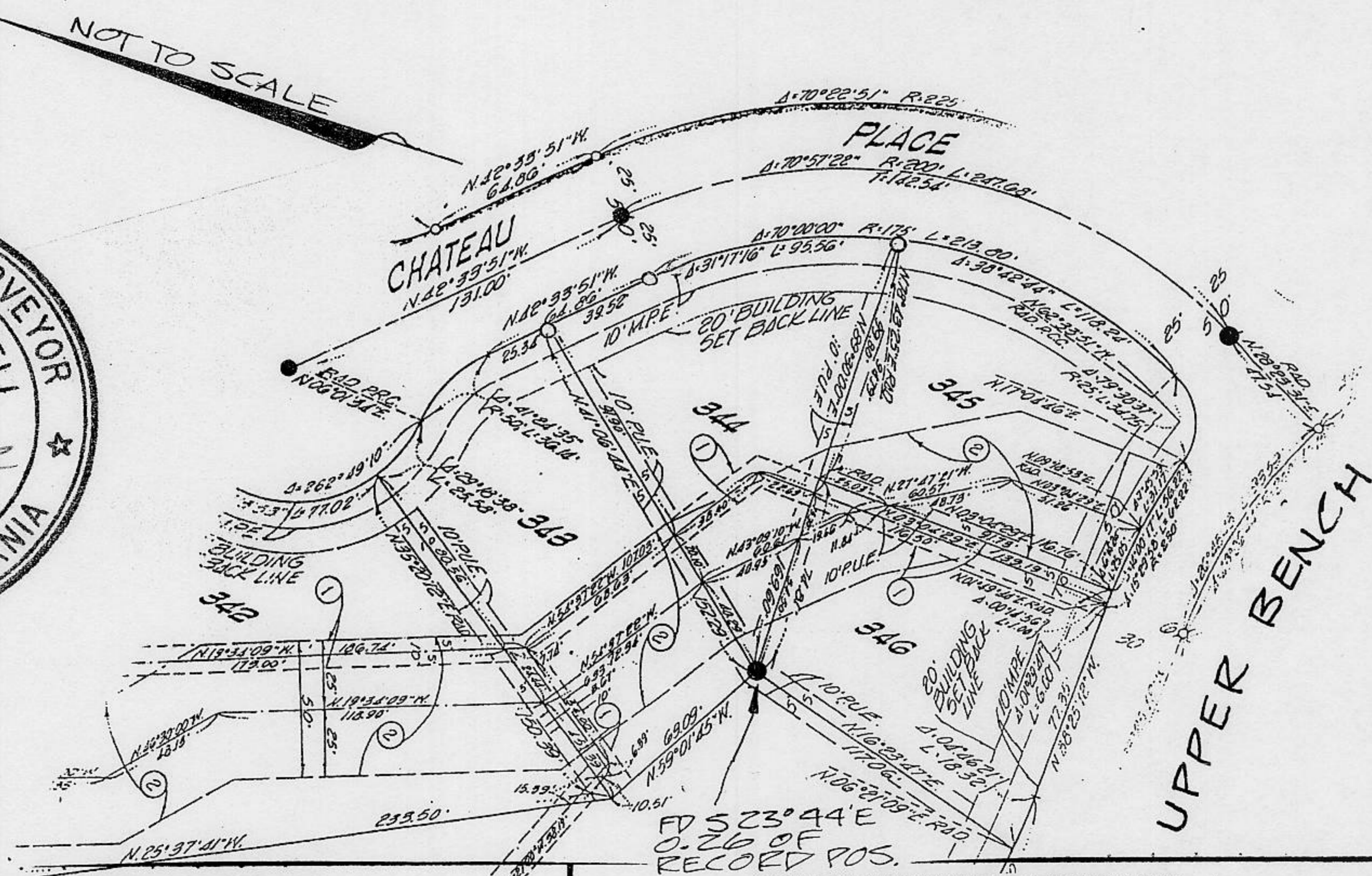
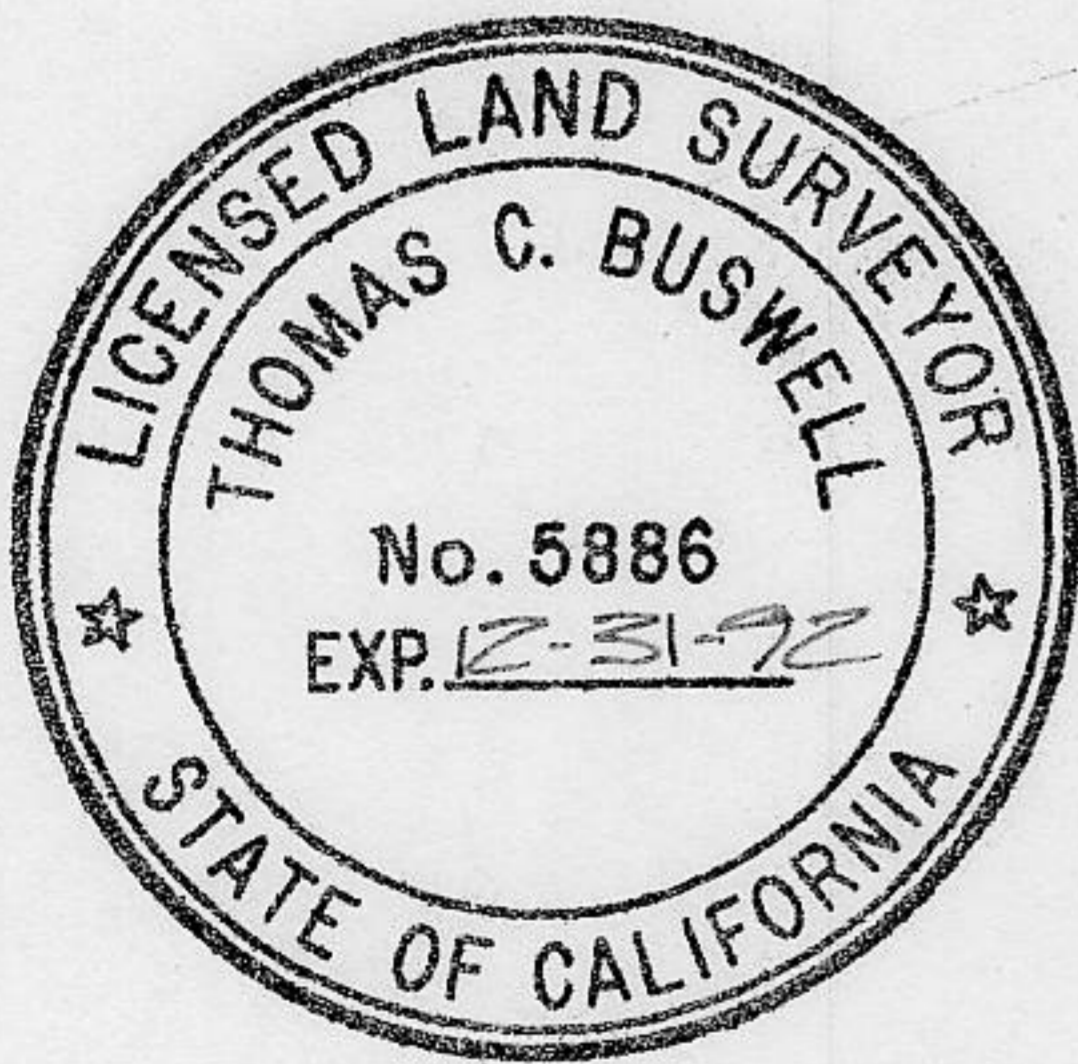
PHYSICAL DESCRIPTION OF CORNER FOUND: EVIDENCE AND METHOD USED TO IDENTIFY OR REESTABLISH

● FOUND RAILROAD SPIKES ON CENTERLINE  
FOUND 5/8" REBAR, R.C.E. 15360 @ WEST PROPERTY CORNER

PHYSICAL DESCRIPTION OF MONUMENTS REBUILT OR PERPETUATED

○ SET 5/8" REBAR L.S. 5886

CALIFORNIA COORDINATE SYSTEM ORDER: FIRST  SECOND  THIRD  NOT APPLICABLE  
STATIONS USED: NGS (USC & GS)  STATE  COUNTY  OTHER  STATION \_\_\_\_\_ STATION \_\_\_\_\_  
ZONE \_\_\_\_\_ ELEVATION \_\_\_\_\_ NORTHINGS (Y) \_\_\_\_\_ EASTINGS (X) \_\_\_\_\_



SURVEYOR'S CERTIFICATE

THIS CORNER RECORD WAS PREPARED BY ME OR UNDER MY DIRECTION IN CONFORMANCE WITH THE LAND SURVEYORS ACT ON 6-12 1991

SIGNED: Thomas G. Buswell

L.S. or R.C.E. No.: 5886

SEAL

COUNTY SURVEYOR'S CERTIFICATE

THIS CORNER RECORD WAS RECEIVED 7/11 1991 AND EXAMINED AND FILED 7/12 1991

BY: John Ridge  
TITLE: DEPUTY COUNTY SURVEYOR

DOCUMENT No. \_\_\_\_\_

STATEMENT ON BACK OF SHEET

YES  NO