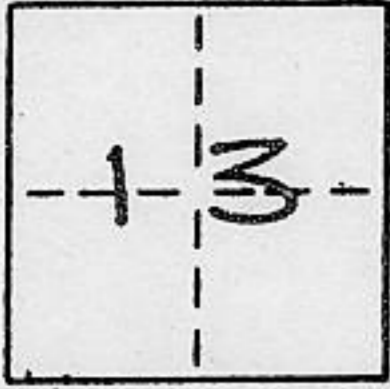


**CORNER RECORD**

COUNTY OF PLACER T. 15N R. 16E M.D. M.D. MERIDIAN CALIFORNIA

CORNER TYPE: GOV'T. CORNER  MEANDER  RANCHO  CONTROL  OTHER   
 CORNER IDENTIFICATION - DATE OF VISIT JUNE 10, 1991



**LOT 256, TALMONT ESTATES UNIT NO. 3  
 BOOK J MAPS PAGE 27,**

CORNER - LEFT AS FOUND  FOUND AND TAGGED  REESTABLISHED OBLITERATED CORNER  REBUILT

PHYSICAL DESCRIPTION OF CORNER FOUND: EVIDENCE AND METHOD USED TO IDENTIFY OR REESTABLISH

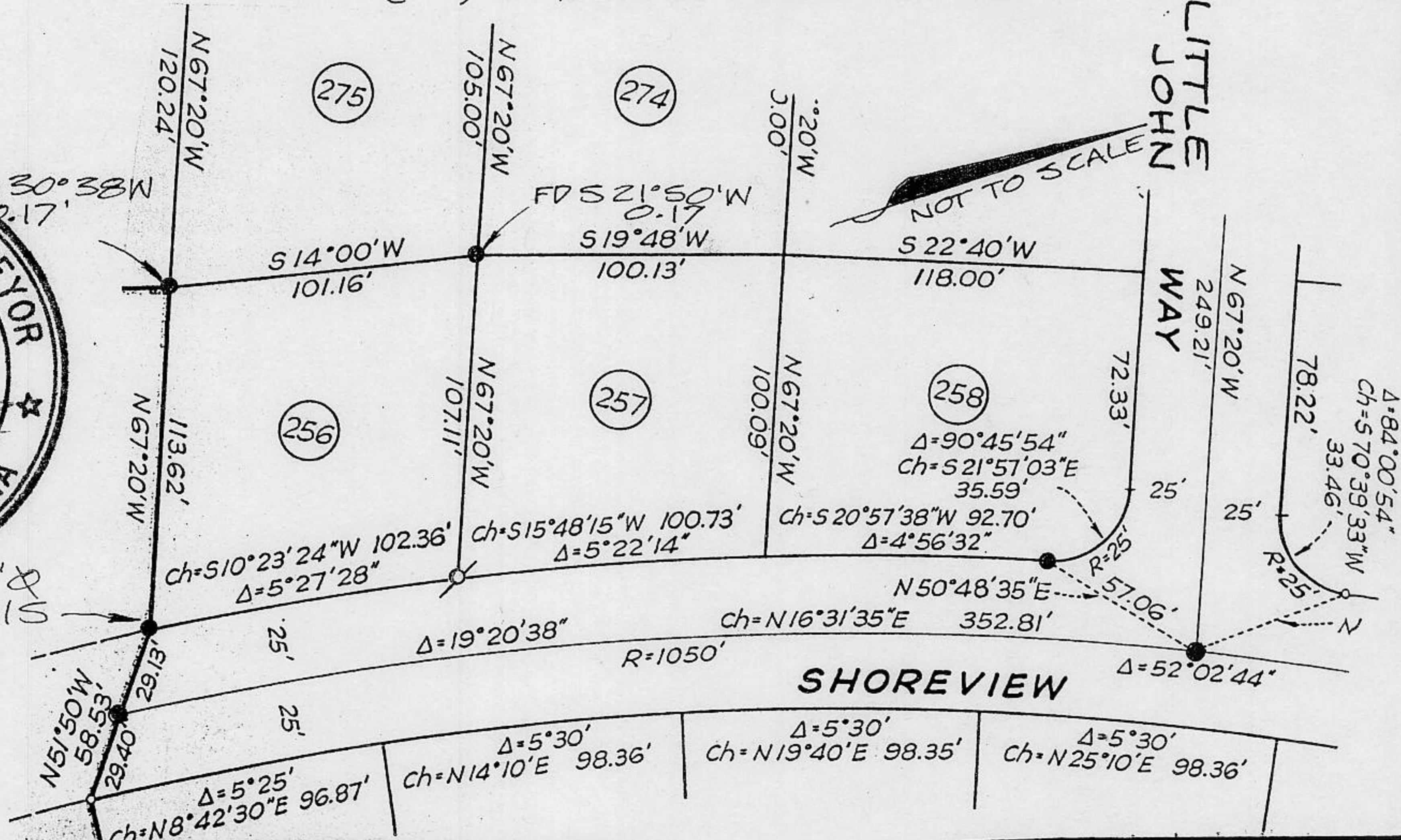
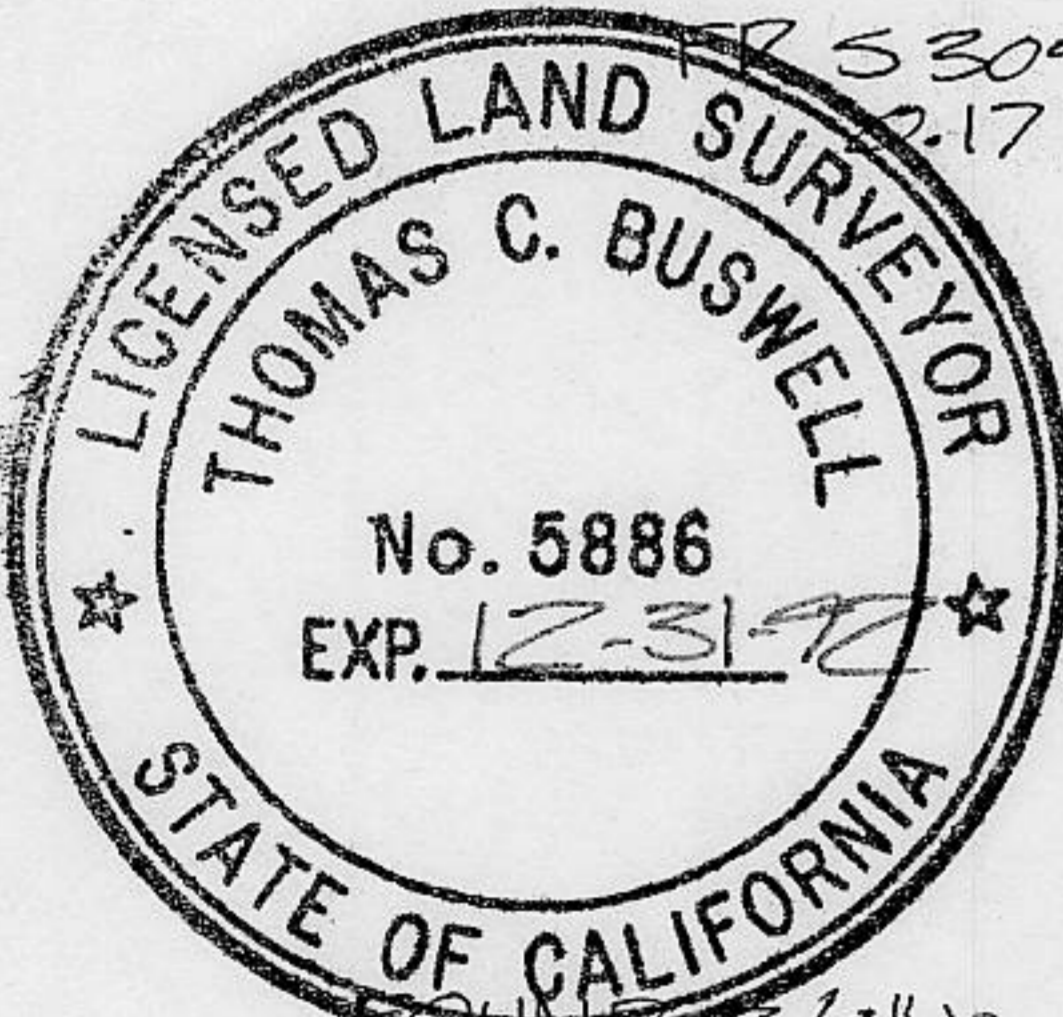
- FOUND RAILROAD SPIKES ON CENTERLINE
- FOUND 3/4" X BAR TAGGED L.S. 2515 @ S.W. & S.E. COR. OF LOT 256
- FOUND 1/2" BAR @ OTHER LOCATIONS

PHYSICAL DESCRIPTION OF MONUMENTS REBUILT OR PERPETUATED

SET 5/8" REBAR L.S. 5886

CALIFORNIA COORDINATE SYSTEM ORDER: FIRST  SECOND  THIRD  **NOT APPLICABLE**  
 STATIONS USED: NGS (USC & GS)  STATE  COUNTY  OTHER  STATION \_\_\_\_\_ STATION \_\_\_\_\_  
 ZONE \_\_\_\_\_ ELEVATION \_\_\_\_\_ NORTHINGS (Y) \_\_\_\_\_ EASTINGS (X) \_\_\_\_\_

( ) RECORD INFORMATION



**SURVEYOR'S CERTIFICATE**

THIS CORNER RECORD WAS PREPARED BY ME OR UNDER MY DIRECTION IN CONFORMANCE WITH THE LAND SURVEYORS ACT ON JUNE 11TH 19 91

SIGNED: Thomas C. Buswell

L.S. or R.C.E. No.: 5886

SEAL

**COUNTY SURVEYOR'S CERTIFICATE**

THIS CORNER RECORD WAS RECEIVED 7/11 1991  
 AND EXAMINED AND FILED 7/12 1991

BY: John R. Higgins  
 TITLE: DEPUTY COUNTY SURVEYOR

DOCUMENT No. \_\_\_\_\_

STATEMENT ON BACK OF SHEET

YES  NO