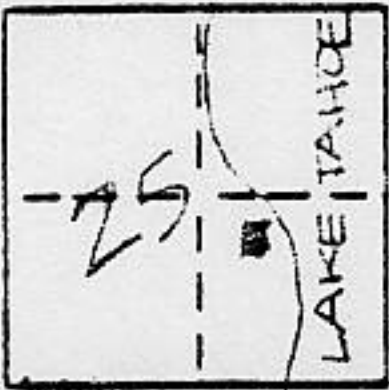


# CORNER RECORD

COUNTY OF PLACER T. 15 N R. 16 E M.D.        MERIDIAN CALIFORNIA

CORNER TYPE: GOV'T. CORNER  MEANDER  RANCHO  CONTROL  OTHER   
 CORNER IDENTIFICATION - DATE OF VISIT 677 1991



N. LINE OF LOT 5 BLACKWOOD COVE SUBD.  
 PER BOOK F OF MAPS, PAGE 3

CORNER - LEFT AS FOUND  FOUND AND TAGGED  REESTABLISHED OBLITERATED CORNER  REBUILT

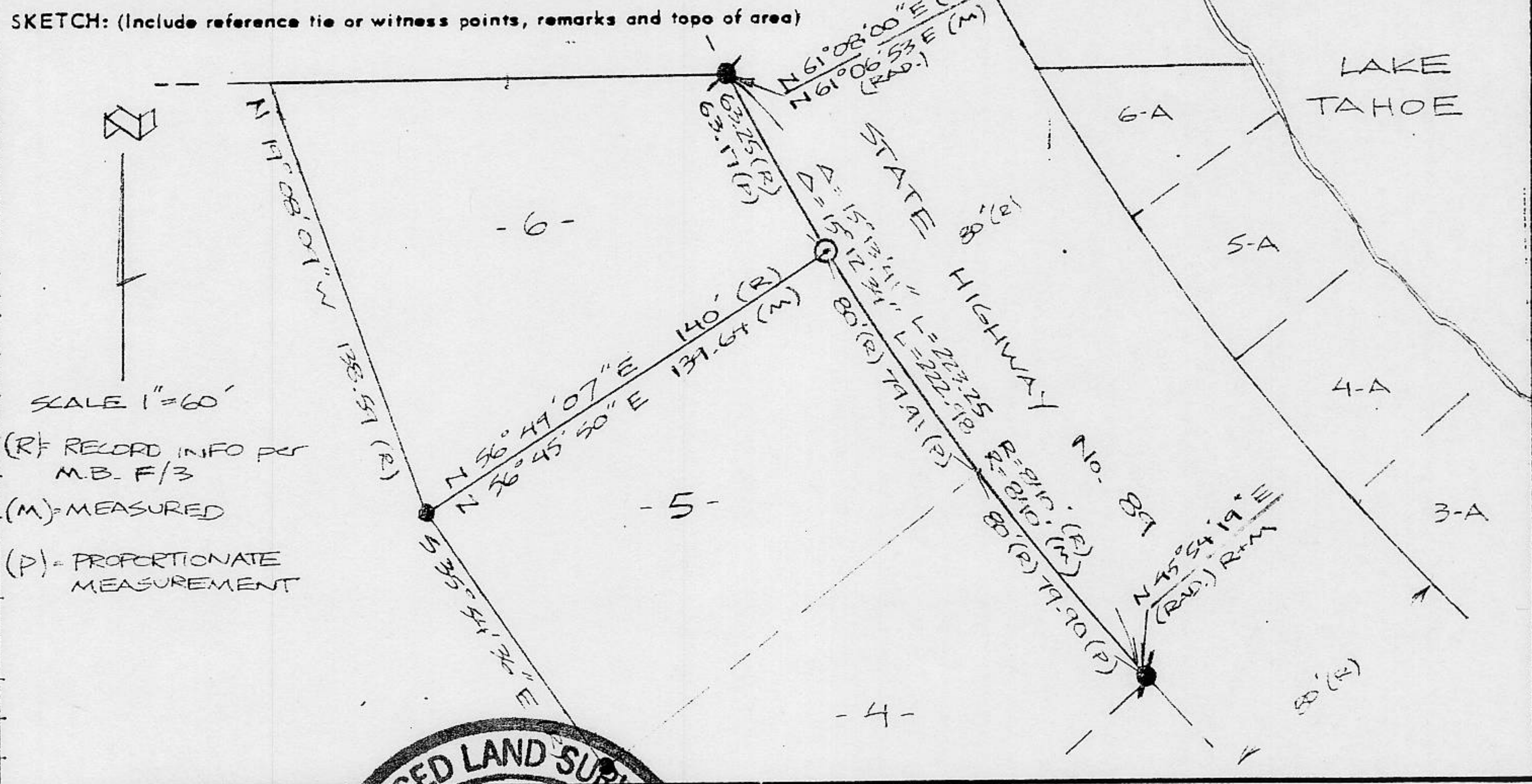
PHYSICAL DESCRIPTION OF CORNER FOUND: EVIDENCE AND METHOD USED TO IDENTIFY OR REESTABLISH \_\_\_\_\_

- = FOUND 1/2" rd. per M.B. F pg 3
- = FOUND 3/4" rd per M.B. F pg 3

PHYSICAL DESCRIPTION OF MONUMENTS REBUILT OR PERPETUATED \_\_\_\_\_

- ⊙ = SET 5/8" rd L.S. 6230

CALIFORNIA COORDINATE SYSTEM ORDER: FIRST  SECOND  THIRD  NA  
 STATIONS USED: NGS (USC & GS)  STATE  COUNTY  OTHER  STATION \_\_\_\_\_ STATION \_\_\_\_\_  
 ZONE \_\_\_\_\_ ELEVATION \_\_\_\_\_ NORTHINGS (Y) \_\_\_\_\_ EASTINGS (X) \_\_\_\_\_



Book 2, Corner Records, Pages 175

SURVEYOR'S CERTIFICATE

THIS CORNER RECORD WAS PREPARED BY ME OR UNDER MY DIRECTION IN CONFORMANCE WITH THE LAND SURVEYORS ACT ON June 91

SIGNED: \_\_\_\_\_

L.S. or R.C.E. No.: \_\_\_\_\_



COUNTY SURVEYOR'S CERTIFICATE

THIS CORNER RECORD WAS RECEIVED 7/19 1991  
 AND EXAMINED AND FILED 7/22 1991

BY: John Rubens  
 TITLE: DEPUTY COUNTY SURVEYOR

DOCUMENT No. \_\_\_\_\_  
 STATEMENT ON BACK OF SHEET

YES  NO