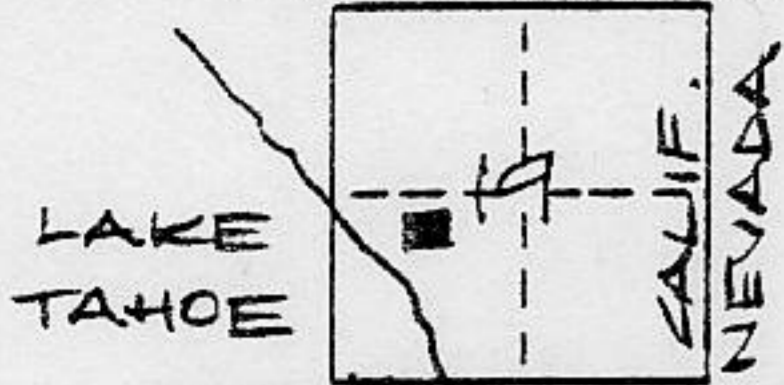


CORNER RECORD

COUNTY OF PLACER T. 16 N R. 18 E M.D. MERIDIAN CALIFORNIA

CORNER TYPE: GOV'T. CORNER MEANDER RANCHO CONTROL OTHER
 CORNER IDENTIFICATION - DATE OF VISIT 9/18 1990

LOT 104 BROCKWAY PARK No. 1
 per BOOK D of MAPS page 51



CORNER - LEFT AS FOUND FOUND AND TAGGED REESTABLISHED OBLITERATED CORNER REBUILT

PHYSICAL DESCRIPTION OF CORNER FOUND: EVIDENCE AND METHOD USED TO IDENTIFY OR REESTABLISH _____

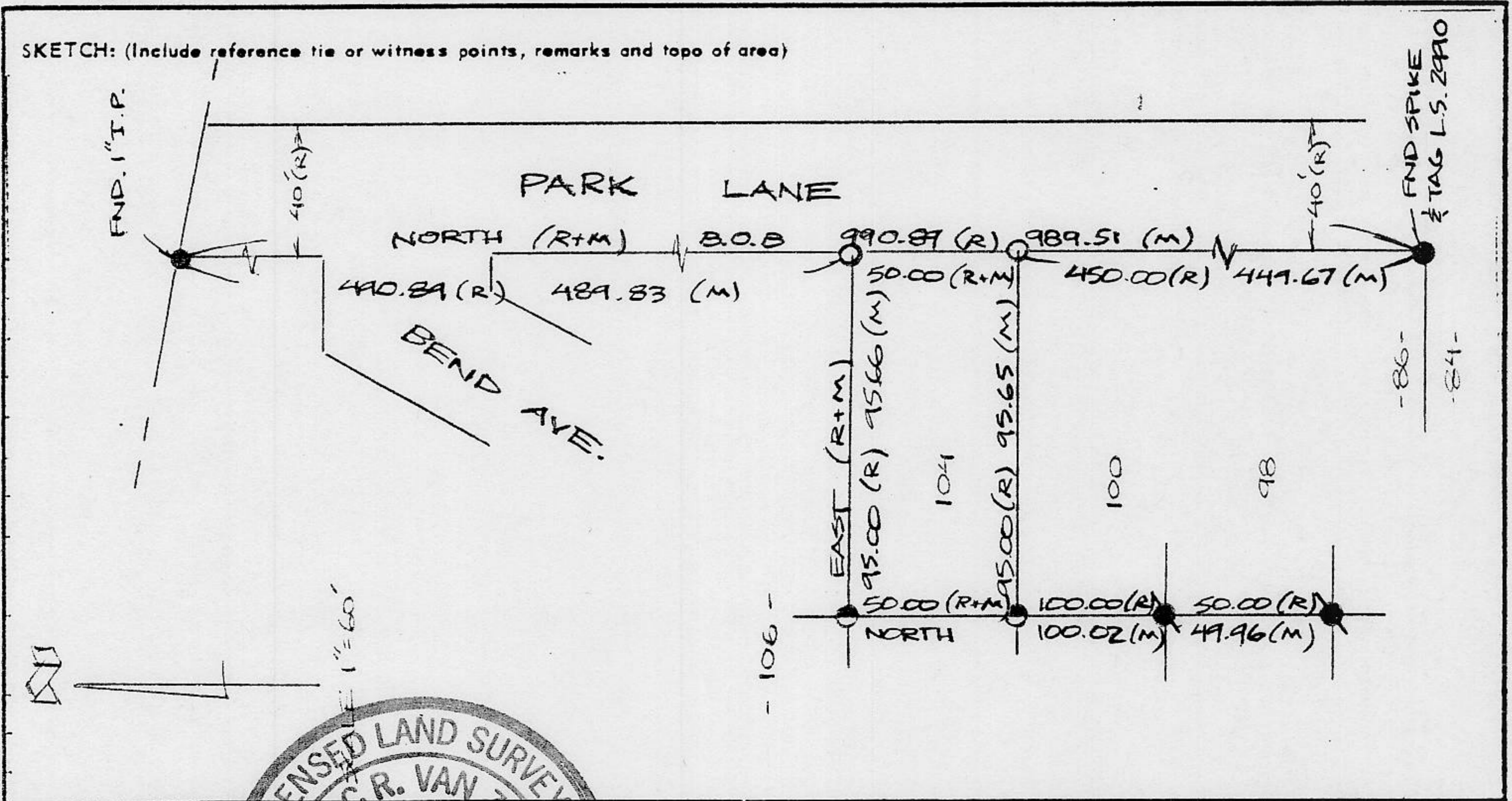
- = FND. MONUMENT AS NOTED
- = FND. 5/8" rd L.S. 3422 per COR. REC. OF LOT 105 (11-30-89)
- ⊙ = FND. 7/8" I.P. NO. REF.

PHYSICAL DESCRIPTION OF MONUMENTS REBUILT OR PERPETUATED _____

○ = SET 5/8" rd L.S. 6230

CALIFORNIA COORDINATE SYSTEM ORDER: FIRST SECOND THIRD N/A
 STATIONS USED: NGS (USC & GS) STATE COUNTY OTHER STATION _____ STATION _____
 ZONE _____ ELEVATION _____ NORTHINGS (Y) _____ EASTINGS (X) _____

SKETCH: (Include reference tie or witness points, remarks and topo of area)



SURVEYOR'S CERTIFICATE
 THIS CORNER RECORD WAS PREPARED BY ME OR UNDER MY DIRECTION IN CONFORMANCE WITH THE LAND SURVEYORS ACT ON Oct 1990
 SIGNED: _____
 L.S. or R.C.E. No.: _____
 SEAL

COUNTY SURVEYOR'S CERTIFICATE
 THIS CORNER RECORD WAS RECEIVED 7/19 1991
 AND EXAMINED AND FILED 7/22 1991
 BY: John Ruffen
 TITLE: DEPUTY COUNTY SURVEYOR
 DOCUMENT No. _____
 STATEMENT ON BACK OF SHEET YES NO

Book 2, Corner Records Page 76