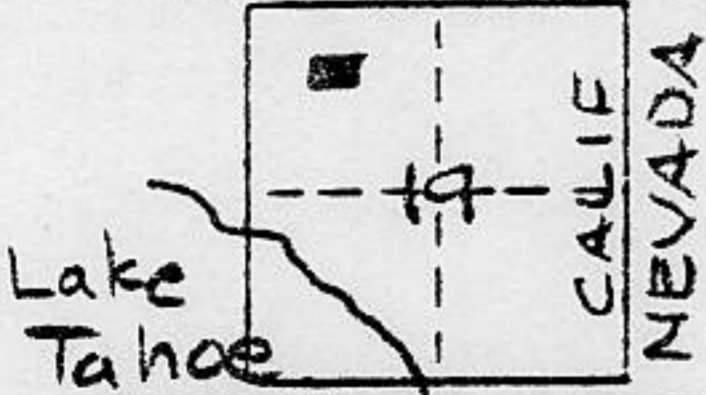


CORNER RECORD

COUNTY OF PLACER T. 16 N R. 18 E M.D. MERIDIAN CALIFORNIA

CORNER TYPE: GOV'T. CORNER MEANDER RANCHO CONTROL OTHER
 CORNER IDENTIFICATION - DATE OF VISIT 9/26 1990



LOTS 22 AND 23 BLK. "V" BROCKWAY VISTA
 PER BK D SUBD. PG. 16 C

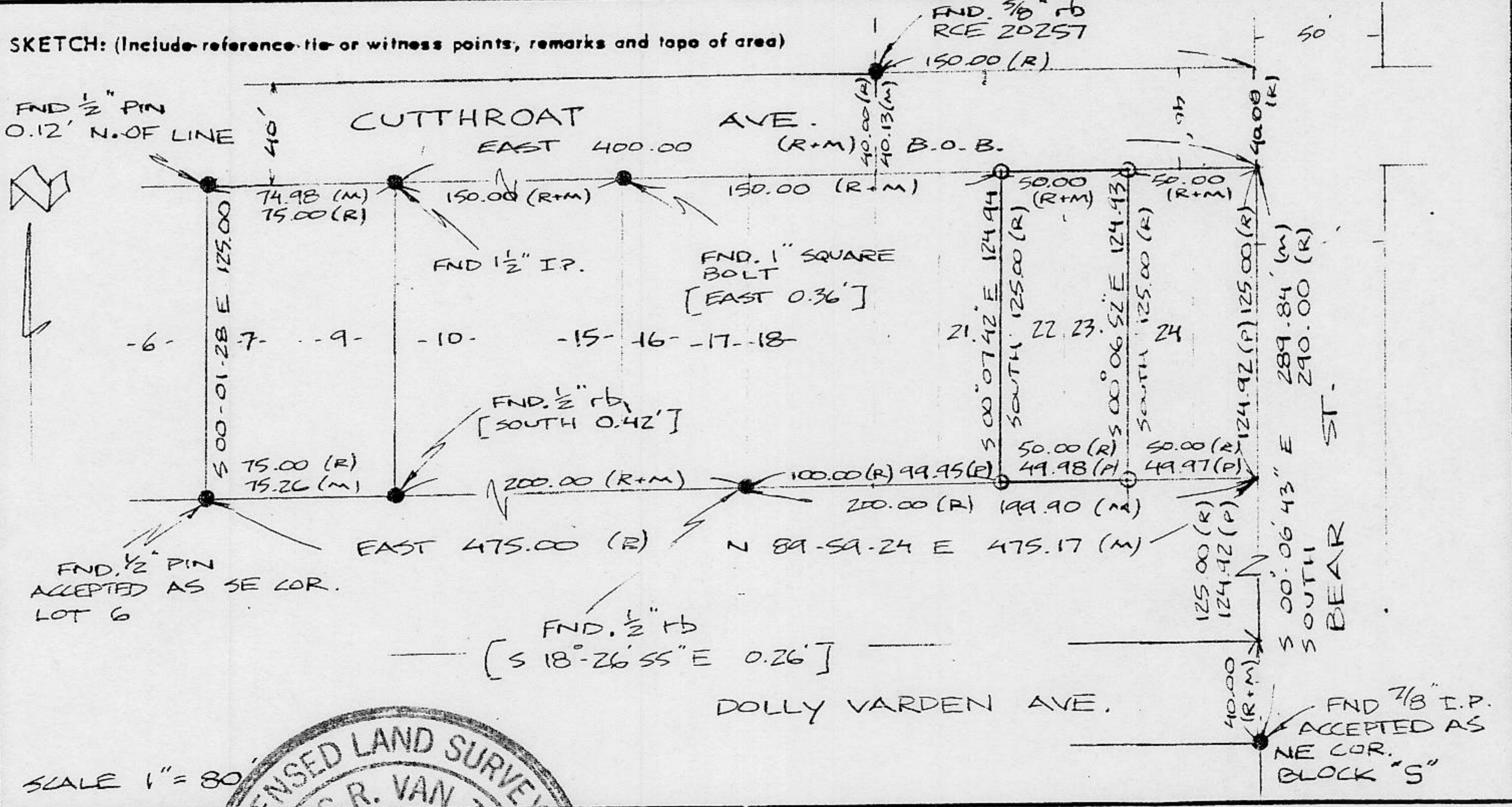
CORNER - LEFT AS FOUND FOUND AND TAGGED REESTABLISHED OBLITERATED CORNER REBUILT

PHYSICAL DESCRIPTION OF CORNER FOUND: EVIDENCE AND METHOD USED TO IDENTIFY OR REESTABLISH _____

- = FND. MONUMENT AS NOTED
- = SET 5/8" RB. L.S. 6230
- (P) = PROPORTIONATE MEASUREMENT

PHYSICAL DESCRIPTION OF MONUMENTS REBUILT OR PERPETUATED NONE

CALIFORNIA COORDINATE SYSTEM ORDER: FIRST SECOND THIRD
 STATIONS USED: NGS (USC & GS) STATE COUNTY OTHER STATION _____ STATION _____
 ZONE _____ ELEVATION _____ NORTHINGS (Y) _____ EASTINGS (X) _____



SURVEYOR'S CERTIFICATE
 THIS CORNER RECORD WAS PREPARED BY ME OR UNDER MY DIRECTION IN CONFORMANCE WITH THE LAND SURVEYORS ACT ON Sept 1990

SIGNED: _____
 L.S. or R.C.E. No.: _____

COUNTY SURVEYOR'S CERTIFICATE
 THIS CORNER RECORD WAS RECEIVED 7/19 1991
 AND EXAMINED AND FILED 7/22 1991

BY: John... Deputy County Surveyor
 TITLE: DEPUTY COUNTY SURVEYOR

DOCUMENT No. _____
 STATEMENT ON BACK OF SHEET YES NO

BOOK 2 CORNER RECORD PAGE 17