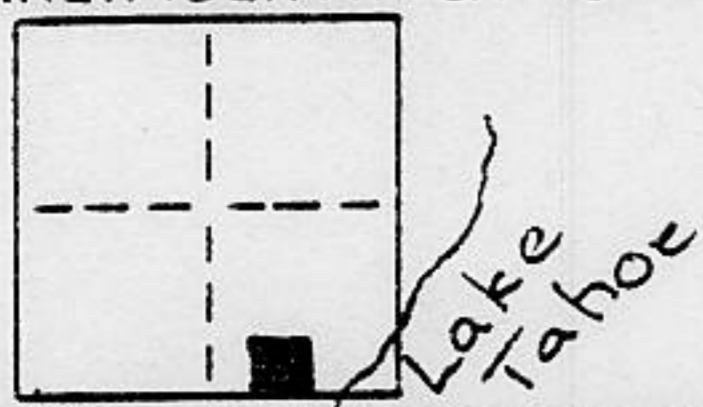


CORNER RECORD

COUNTY OF Placer T. 15N R. 16E M.D.M. MERIDIAN CALIFORNIA

CORNER TYPE: GOV'T. CORNER MEANDER RANCHO CONTROL OTHER

CORNER IDENTIFICATION - DATE OF VISIT 06 March 1991



Amended Map of
LAKE TAHOE PARK
Subdivision No. 1

BLOCK K

CORNER - LEFT AS FOUND FOUND AND TAGGED REESTABLISHED OBLITERATED CORNER REBUILT

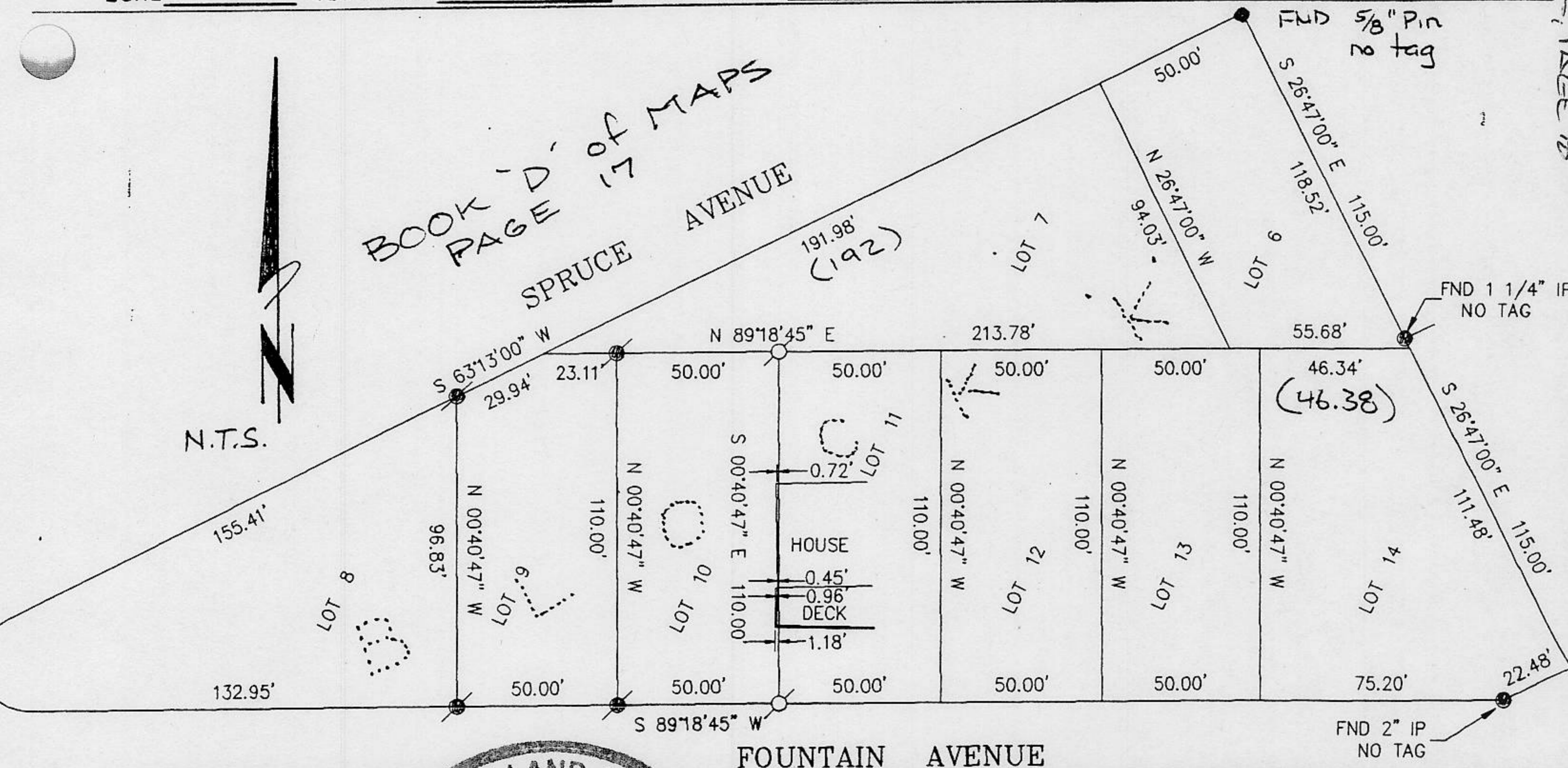
PHYSICAL DESCRIPTION OF CORNER FOUND: EVIDENCE AND METHOD USED TO IDENTIFY OR REESTABLISH

- found $5/8$ " rebar with plastic cap "LS 2712"
- found as noted

PHYSICAL DESCRIPTION OF MONUMENTS REBUILT OR PERPETUATED

Q set $5/8$ " rebar with plastic cap "LS 6230"

CALIFORNIA COORDINATE SYSTEM ORDER: FIRST SECOND THIRD
 STATIONS USED: NGS (USC & GS) STATE COUNTY OTHER STATION _____ STATION _____
 ZONE _____ ELEVATION _____ NORTHINGS (Y) _____ EASTINGS (X) _____



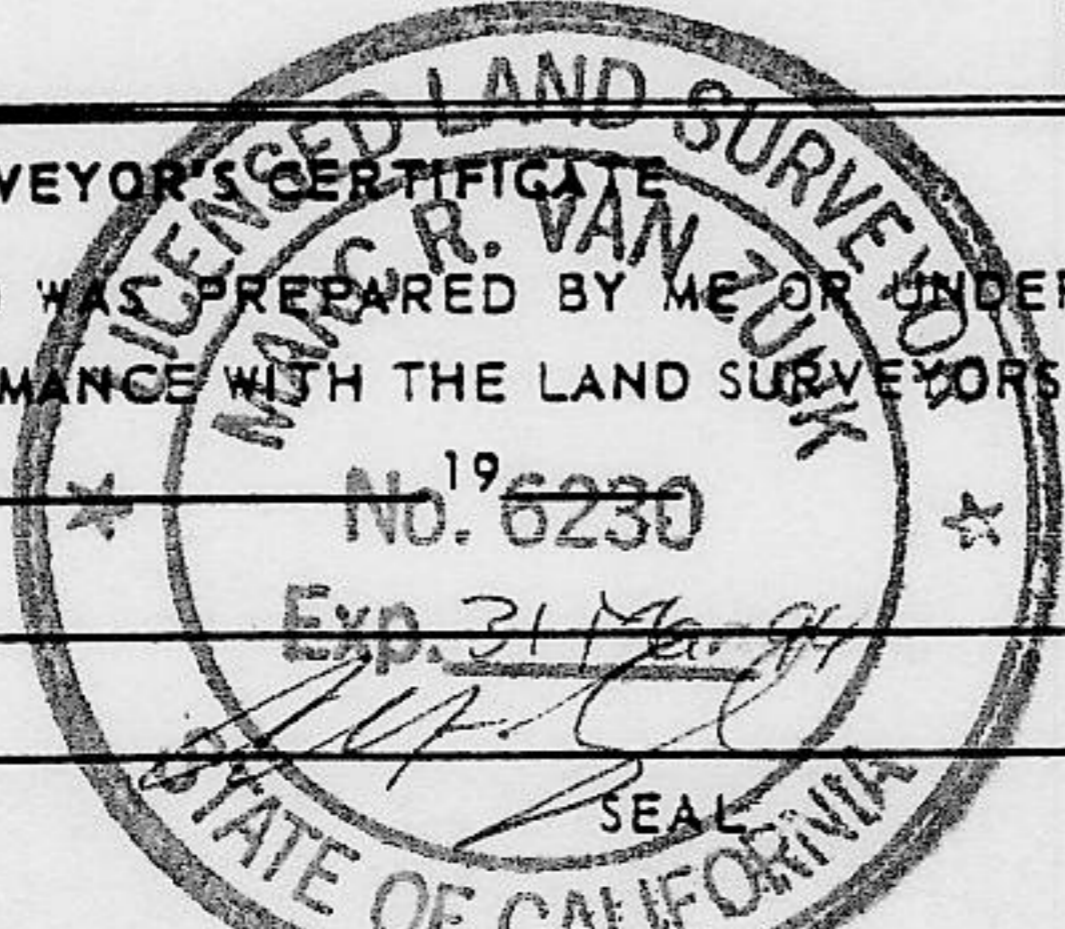
BOOK Z, CORNER RECORD, PAGES 78

SURVEYOR'S CERTIFICATE

THIS CORNER RECORD WAS PREPARED BY ME OR UNDER MY DIRECTION IN CONFORMANCE WITH THE LAND SURVEYORS ACT ON Feb 94

SIGNED: _____

L.S. or R.C.E. No.: _____



COUNTY SURVEYOR'S CERTIFICATE

THIS CORNER RECORD WAS RECEIVED 7/19 1991
 AND EXAMINED AND FILED 7/22 1991

BY: John Ruffens
 TITLE: DEPUTY COUNTY SURVEYOR

DOCUMENT No. _____
 STATEMENT ON BACK OF SHEET

YES NO

TN 566.00