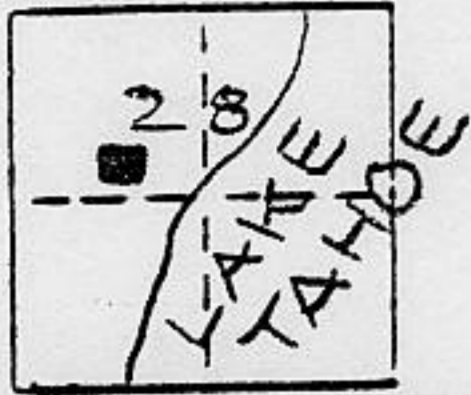


CORNER RECORD

COUNTY OF PLACER T. 16 N R. 17 E MDB & MERIDIAN CALIFORNIA

CORNER TYPE: GOV'T. CORNER MEANDER RANCHO CONTROL OTHER
 CORNER IDENTIFICATION - DATE OF VISIT JULY 26 19 90



FULTON ACRES M.O.R. BOOK "D" Pg 93

CORNER - LEFT AS FOUND FOUND AND TAGGED REESTABLISHED OBLITERATED CORNER REBUILT

PHYSICAL DESCRIPTION OF CORNER FOUND: EVIDENCE AND METHOD USED TO IDENTIFY OR REESTABLISH _____

- FOUND MONUMENT AS NOTED
- FOUND 2" x 2" CEDAR HUB PAINTED WHITE & SCRIBED FOR COR.

PHYSICAL DESCRIPTION OF MONUMENTS REBUILT OR PERPETUATED _____

○ set 5/8 rebar w/cap
 LS 6230

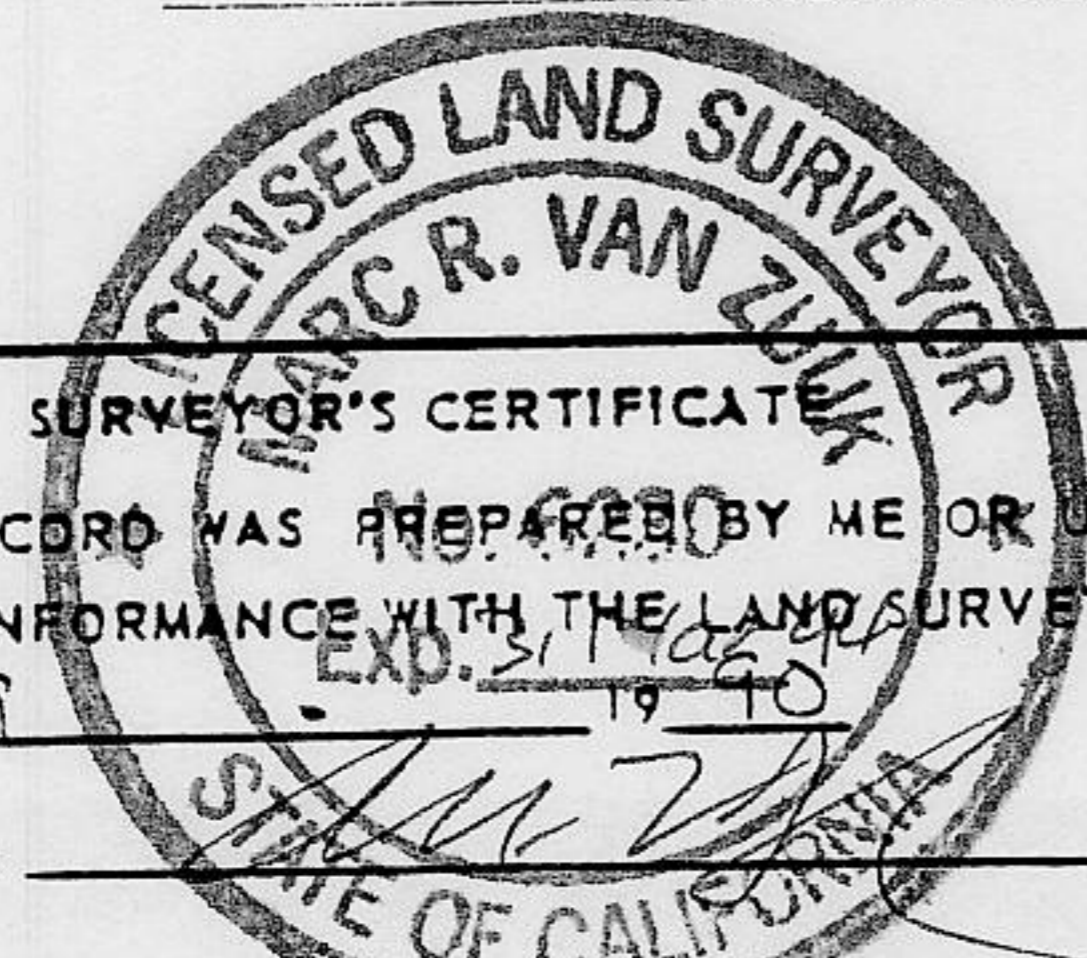
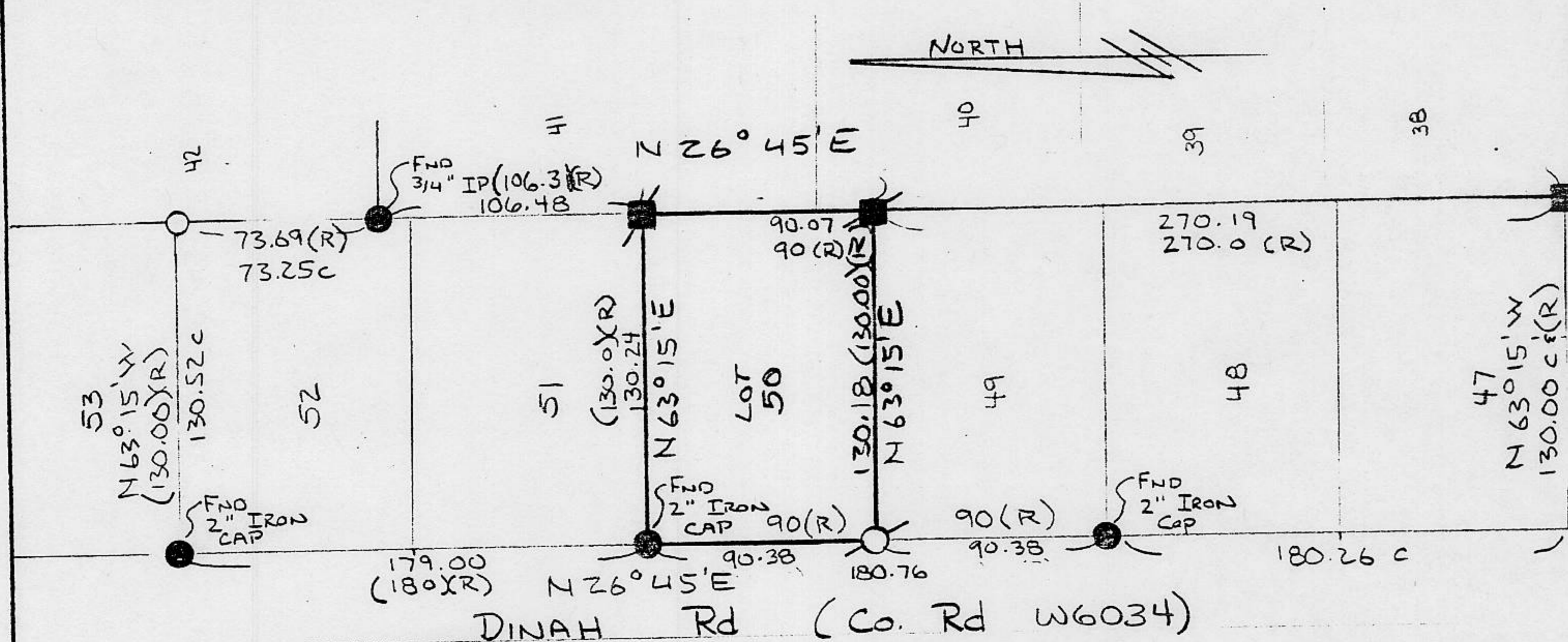
■ Found 2x2 CEDAR HUB deteriorating
 set 5/8 rebar w/cap "LS 6230" 05
 below ground & reset original hub w/rocks above

original hub reset in rocks

5/8 rebar w/cap "LS 6230" set -05 below grade

CALIFORNIA COORDINATE SYSTEM ORDER: FIRST SECOND THIRD
 STATIONS USED: NGS (USC & GS) STATE COUNTY OTHER STATION _____ STATION _____
 ZONE _____ ELEVATION _____ NORTHINGS (Y) _____ EASTINGS (X) _____

SKETCH: (Include reference tie or witness points, remarks and topo of area)



SURVEYOR'S CERTIFICATE
 THIS CORNER RECORD WAS PREPARED BY ME OR UNDER MY DIRECTION IN CONFORMANCE WITH THE LAND SURVEYORS ACT ON AUG 9 19 90

COUNTY SURVEYOR'S CERTIFICATE
 THIS CORNER RECORD WAS RECEIVED 7/19 1991 AND EXAMINED AND FILED 7/22 1991
 BY: John Ruben
 TITLE: DEPUTY COUNTY SURVEYOR
 DOCUMENT No. _____

1/4 N 501.00 SIGNED: _____

BOOK 2 CORNER RECORDS PAGE 79