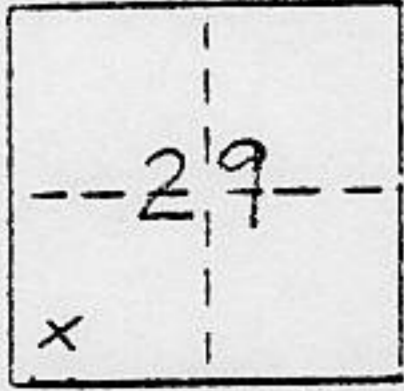


CORNER RECORD

COUNTY OF PLACER T. 16 N R. 16 E M.D.B.E.M MERIDIAN CALIFORNIA

CORNER TYPE: GOV'T. CORNER MEANDER RANCHO CONTROL OTHER
 CORNER IDENTIFICATION - DATE OF VISIT JULY 31 1990



Squaw Valley Estates Subd No. 4 F/Maps/9
 and shown on 4/Sur/67

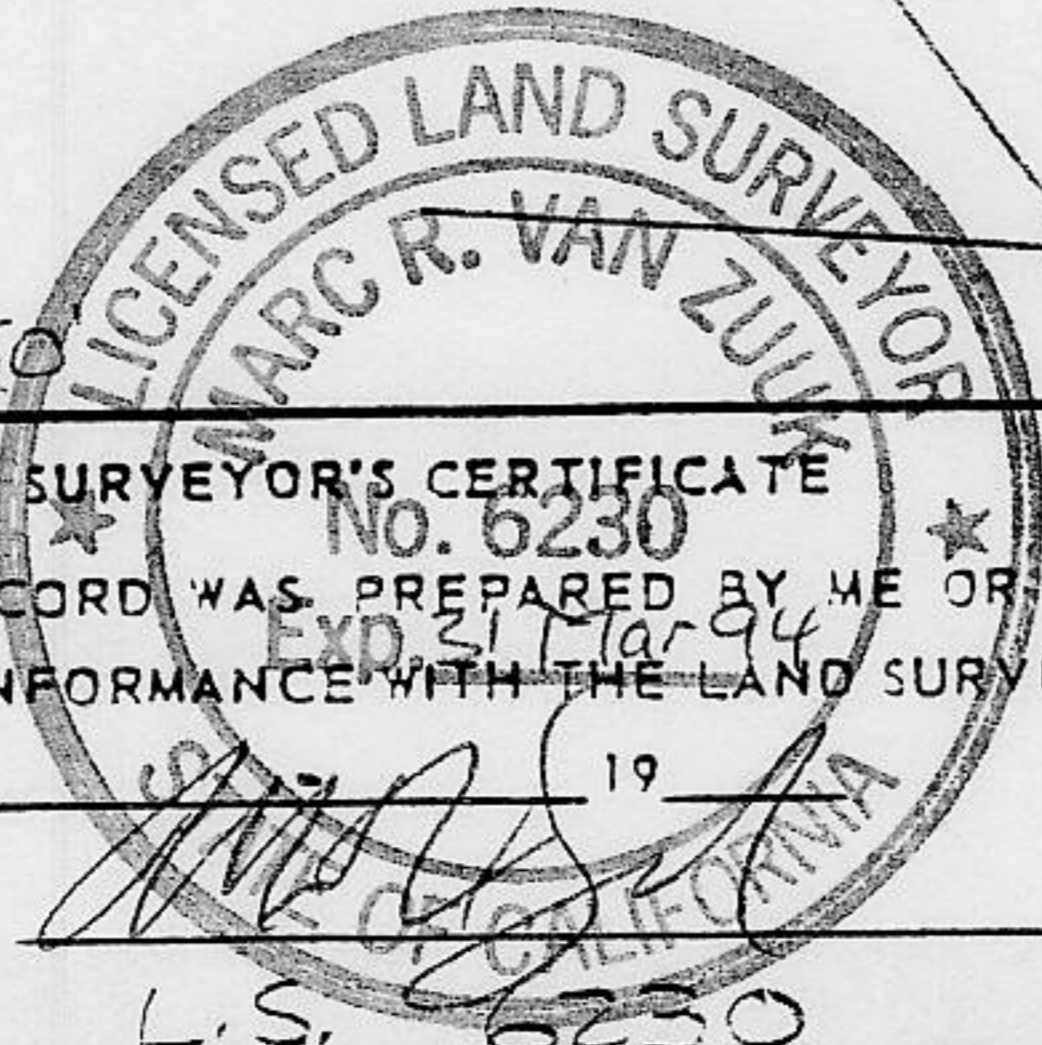
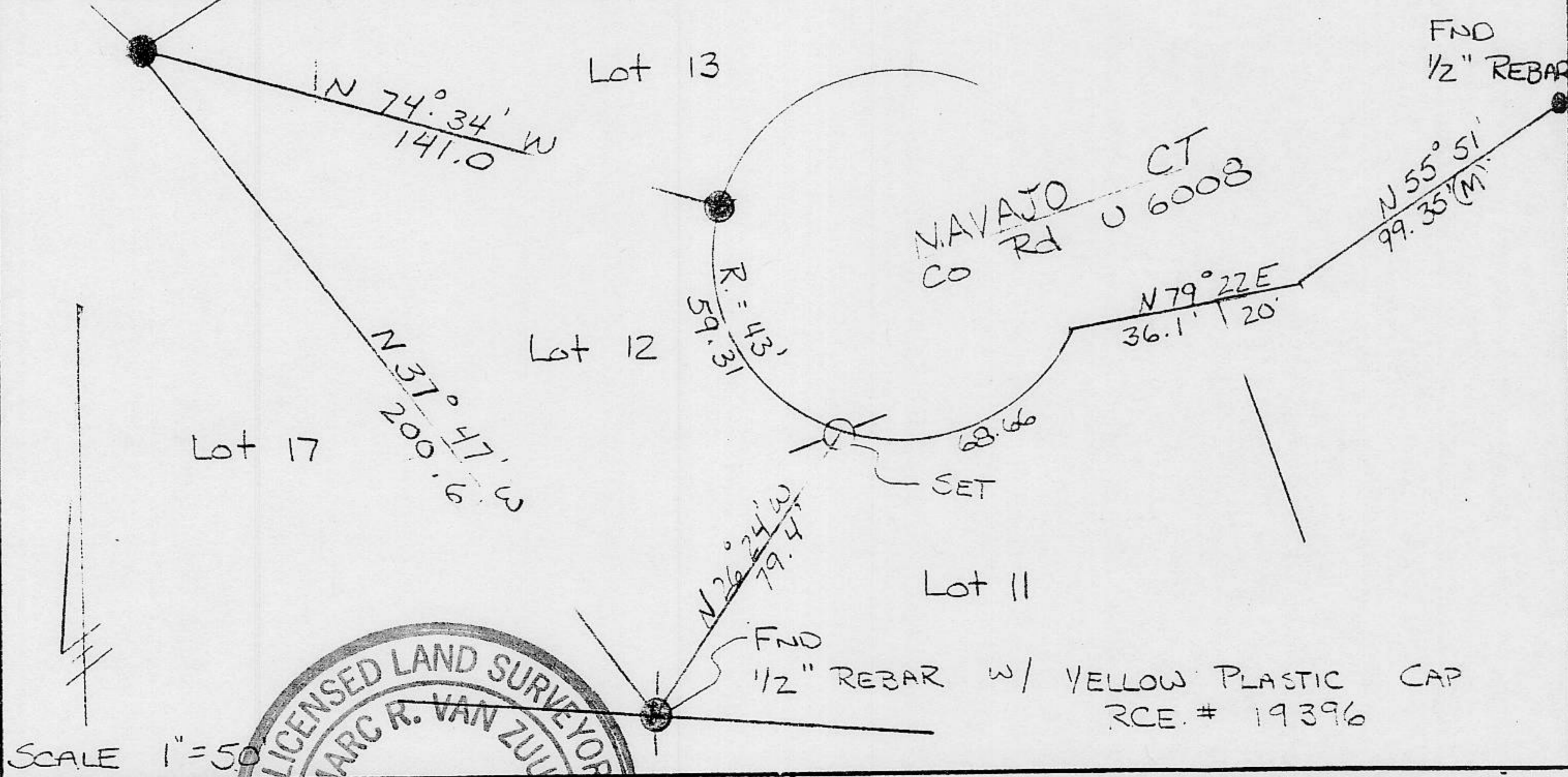
CORNER - LEFT AS FOUND FOUND AND TAGGED REESTABLISHED OBLITERATED CORNER REBUILT

PHYSICAL DESCRIPTION OF CORNER FOUND: EVIDENCE AND METHOD USED TO IDENTIFY OR REESTABLISH
 ● Found 1/2" Rebar

PHYSICAL DESCRIPTION OF MONUMENTS REBUILT OR PERPETUATED
 ○ Set 5/8" Rebar w/ Plastic Cap "LS 6230"

CALIFORNIA COORDINATE SYSTEM ORDER: FIRST SECOND THIRD N/A
 STATIONS USED: NGS (USC & GS) STATE COUNTY OTHER STATION _____ STATION _____
 ZONE _____ ELEVATION _____ NORTHINGS (Y) _____ EASTINGS (X) _____

SKETCH: (Include reference tie or witness points, remarks and topo of area)



SURVEYOR'S CERTIFICATE
 THIS CORNER RECORD WAS PREPARED BY ME OR UNDER MY DIRECTION IN CONFORMANCE WITH THE LAND SURVEYORS ACT ON AUG 1990
 SIGNED: [Signature]
 L.S. or R.C.E. No.: L.S. 6230

COUNTY SURVEYOR'S CERTIFICATE
 THIS CORNER RECORD WAS RECEIVED 7/19 1991
 AND EXAMINED AND FILED 7/22 1991
 BY: John Rubens
 TITLE: DEPUTY COUNTY SURVEYOR
 DOCUMENT No. _____
 STATEMENT ON BACK OF SHEET YES NO

Book 2 CORNER RECORDS PAGE 81