

(For County Use Only)

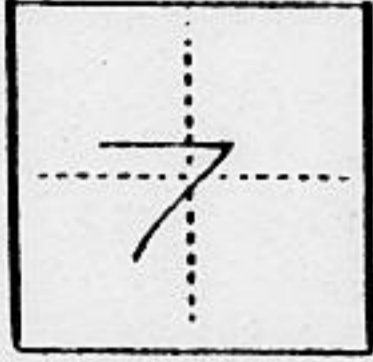
CORNER RECORD

NO. 7125.356

COUNTY OF PLACER T. 14N R. 17E MOUNT DIABLO MERIDIAN CALIFORNIA

CORNER TYPE: GOV'T. CORNER MEANDER RANCHO CONTROL OTHER

CORNER IDENTIFICATION — DATE OF VISIT 10/30 1990



CHAMBERS LANDING II, TRACT #553, 'N MAPS 50

CORNER — LEFT AS FOUND FOUND AND TAGGED REESTABLISHED OBLITERATED CORNER REBUILT

PHYSICAL DESCRIPTION OF CORNER FOUND; EVIDENCE AND METHOD USED TO IDENTIFY OR REESTABLISH

• FOUND CORNERS AS NOTED

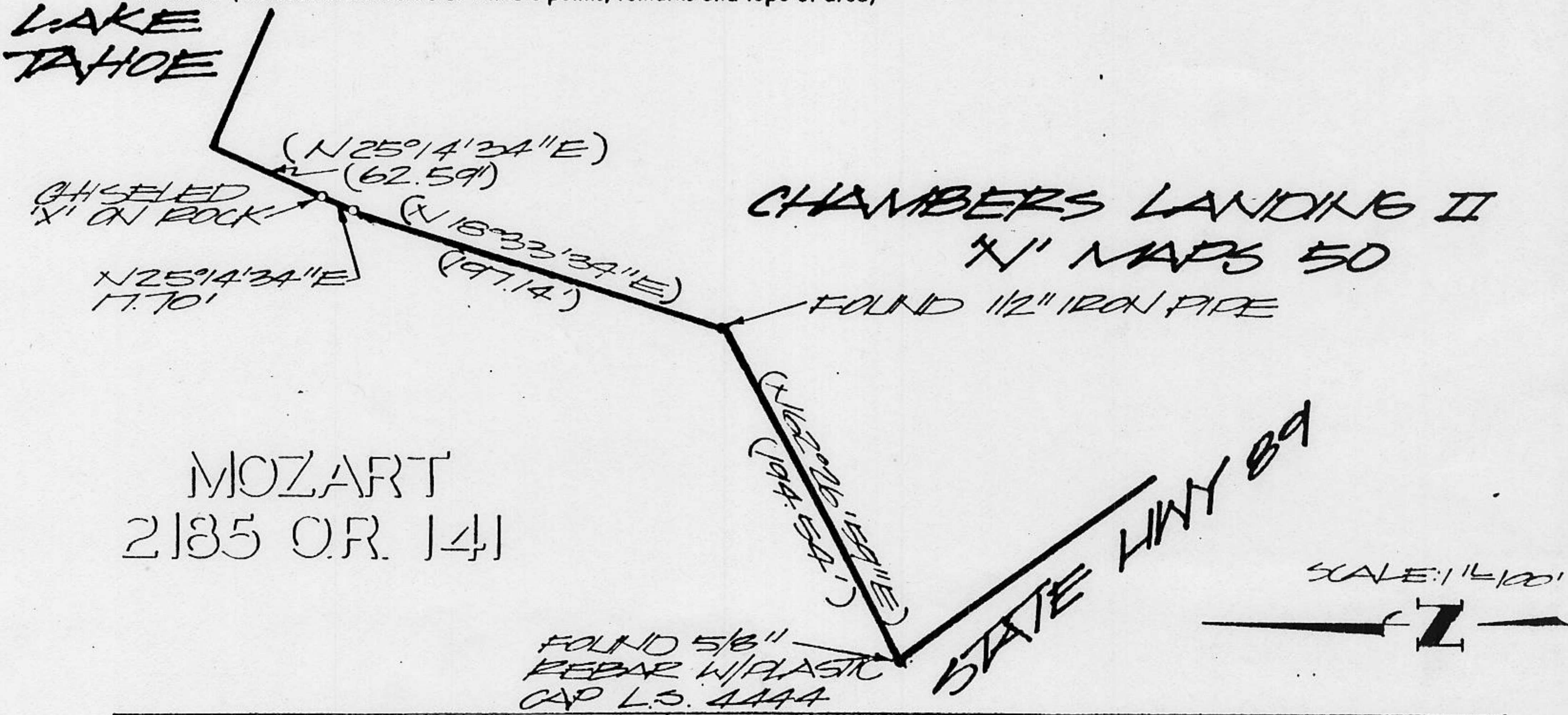
PHYSICAL DESCRIPTION OF MONUMENTS REBUILT OR PERPETUATED

ON SET 5/8" x 24" REBAR WITH PLASTIC CAP, L.S. 4976 EXCEPT AS NOTED

CALIFORNIA COORDINATE SYSTEM ORDER: FIRST SECOND THIRD
STATIONS USED: NGS (USC & GS) STATE COUNTY OTHER STATION N/A STATION _____
ZONE _____ ELEVATION _____ NORTHINGS (Y) _____ EASTINGS (X) _____

(Fold)

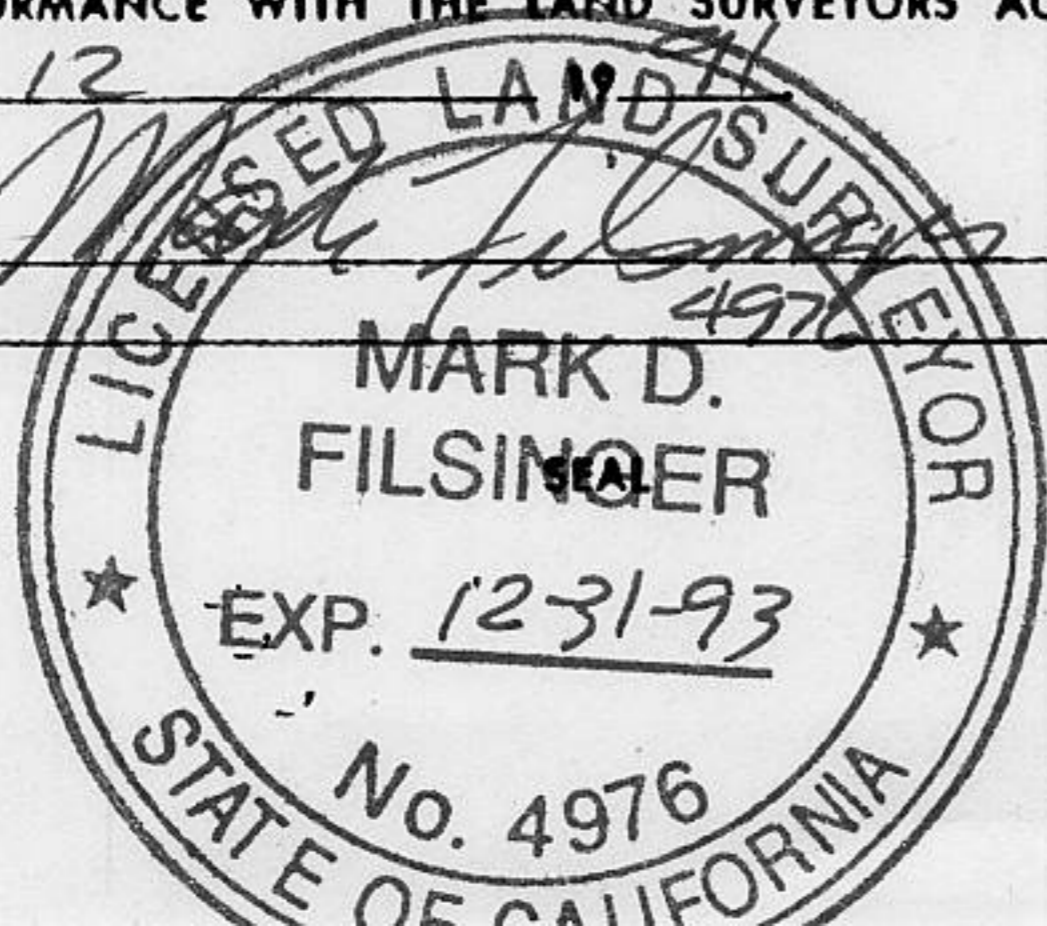
SKETCH: (Include reference tie or witness points, remarks and topo of area)



SURVEYOR'S CERTIFICATE

THIS CORNER RECORD WAS PREPARED BY ME OR UNDER MY DIRECTION IN CONFORMANCE WITH THE LAND SURVEYORS ACT ON DEC. 12

SIGNED: Mark D. Filsinger
L.S. or R.C.E. No.: 4976



COUNTY SURVEYOR'S CERTIFICATE

THE CORNER RECORD WAS RECEIVED 8/20 1991
AND EXAMINED AND FILED 8/20 1991

BY: John Roberts
TITLE: DEPUTY COUNTY SURVEYOR

DOCUMENT No. _____

STATEMENT ON BACK OF SHEET

YES NO

Book 2, Corner Records, Page 84