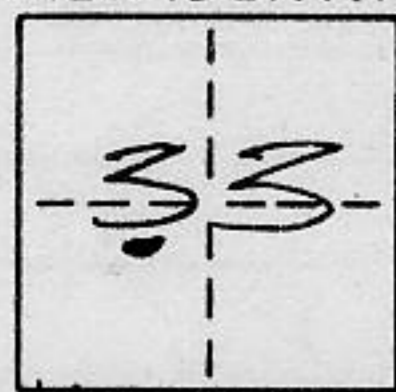


**CORNER RECORD**

COUNTY OF PLACER T. 16 NORTH R. 17 EAST MOUNT DIABLO MERIDIAN CALIFORNIA

CORNER TYPE: GOV'T. CORNER  MEANDER  RANCHO  CONTROL  OTHER

CORNER IDENTIFICATION - DATE OF VISIT JULY 22ND 19 91



LOT 363, DOLLAR POINT UNIT NO. 6, BOOK "I" MAPS 15

CORNER - LEFT AS FOUND  FOUND AND TAGGED  REESTABLISHED OBLITERATED CORNER  REBUILT

PHYSICAL DESCRIPTION OF CORNER FOUND: EVIDENCE AND METHOD USED TO IDENTIFY OR REESTABLISH \_\_\_\_\_

• FOUND 1/2" PIN PAINTED WHITE UNLESS OTHERWISE INDICATED.  
ALL CORNERS FOUND WERE ACCEPTED AS ORIGINAL.

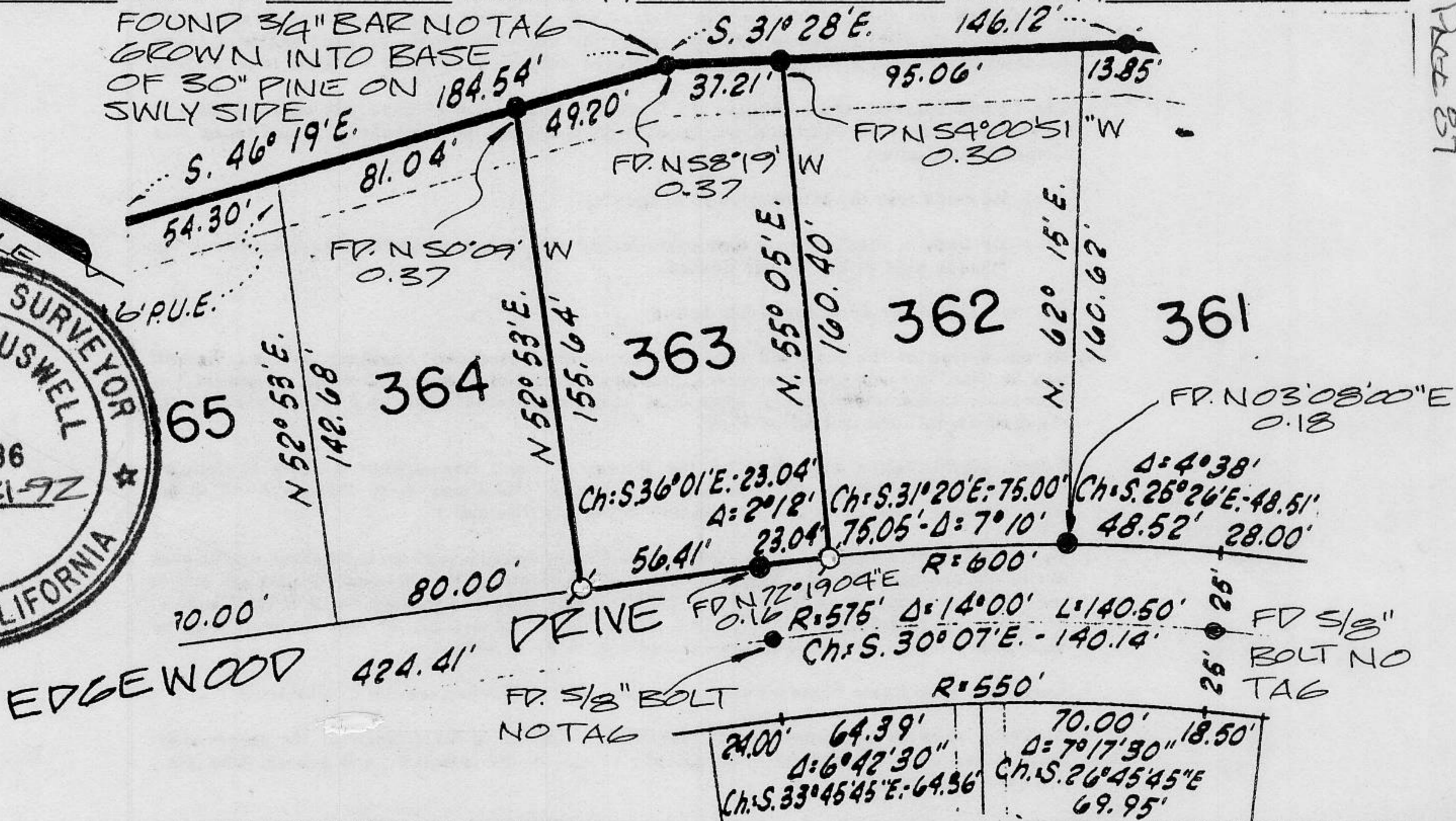
PHYSICAL DESCRIPTION OF MONUMENTS REBUILT OR PERPETUATED \_\_\_\_\_

SET 5/8" & REBAR L.S. 5886  
FRONT CORNERS WERE REESTABLISHED FROM EXISTING  
CENTERLINE MONUMENTATION.

CALIFORNIA COORDINATE SYSTEM ORDER: FIRST  SECOND  THIRD  NOT APPLICABLE

STATIONS USED: NGS (USC & GS)  STATE  COUNTY  OTHER  STATION \_\_\_\_\_ STATION \_\_\_\_\_

ZONE \_\_\_\_\_ ELEVATION \_\_\_\_\_ NORTHINGS (Y) \_\_\_\_\_ EASTINGS (X) \_\_\_\_\_



**SURVEYOR'S CERTIFICATE**

THIS CORNER RECORD WAS PREPARED BY ME OR UNDER MY DIRECTION IN CONFORMANCE WITH THE LAND SURVEYORS ACT ON JULY 23RD 19 91

SIGNED: Thomas C. Buswell

L.S. or  No.: 5886

SEAL

**COUNTY SURVEYOR'S CERTIFICATE**

THIS CORNER RECORD WAS RECEIVED 9/3 19 91  
 AND EXAMINED AND FILED 9/3 19 91

BY: John Ruffess  
 TITLE: DEPUTY COUNTY SURVEYOR

DOCUMENT No. \_\_\_\_\_

STATEMENT ON BACK OF SHEET

YES  NO

Book 2, Corner Records, Page 87