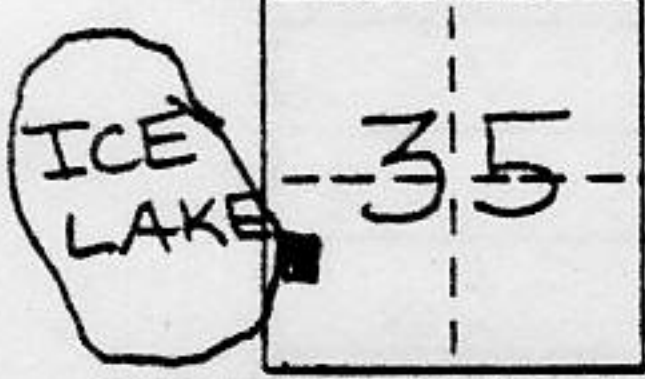


CORNER RECORD

COUNTY OF PLACER T. 17N R. 14E M.D.B & E MERIDIAN CALIFORNIA

CORNER TYPE: GOV'T. CORNER MEANDER RANCHO CONTROL OTHER
 CORNER IDENTIFICATION - DATE OF VISIT 07 Aug 1991



LOT 2 BLOCK 'E'
ICE LAKES SUBDIVISION NO. 1

BOOK D OF MAPS, PAGE 85

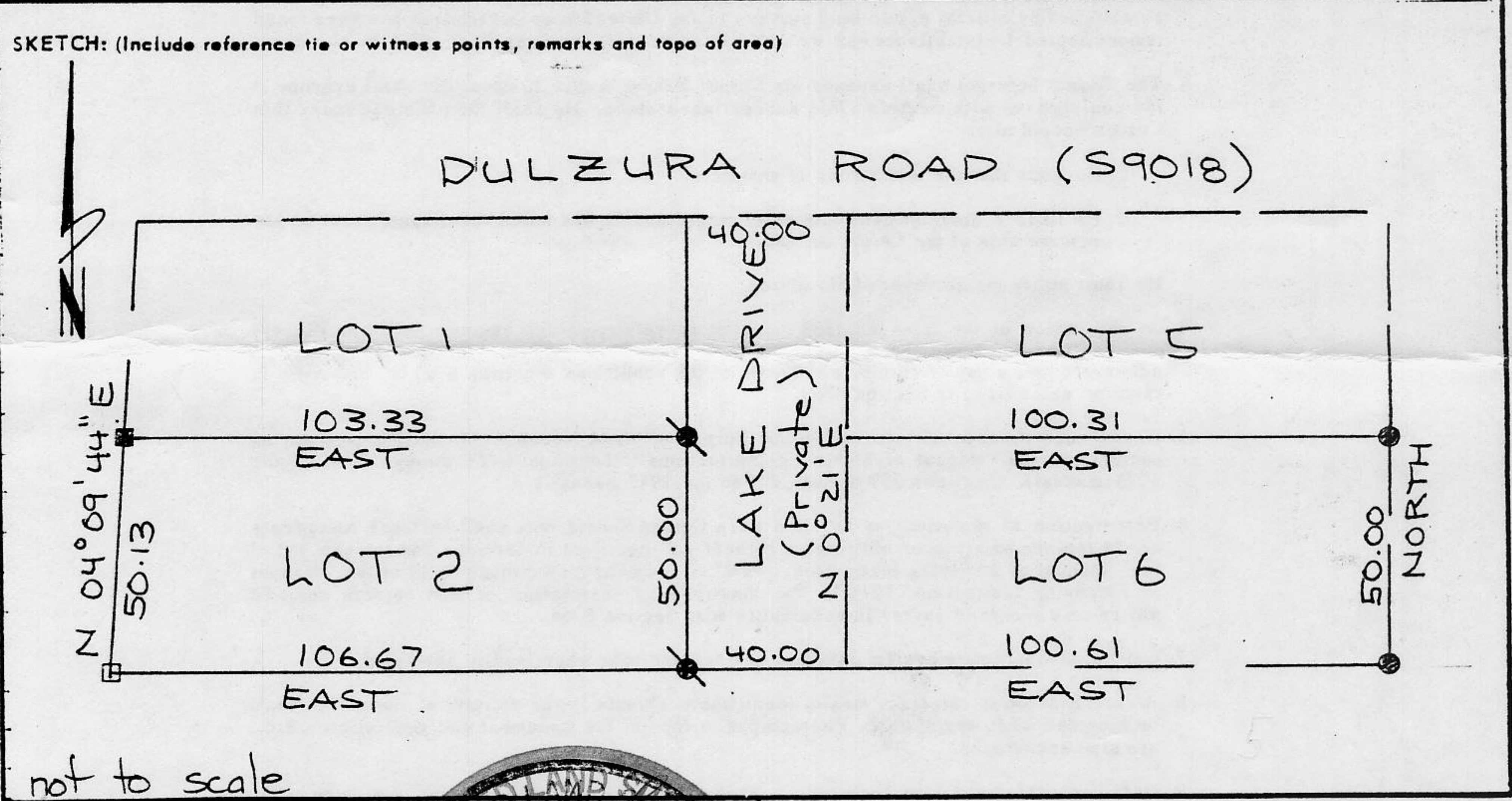
CORNER - LEFT AS FOUND FOUND AND TAGGED REESTABLISHED OBLITERATED CORNER REBUILT

PHYSICAL DESCRIPTION OF CORNER FOUND: EVIDENCE AND METHOD USED TO IDENTIFY OR REESTABLISH

- found original 2x2 hub set 5/8" rebar "LS 6230" thru middle
- found original 2x2 hub in fair condition
- fnd 3/4" rebar no tag
- fnd 5/8" rebar "LS 3422"

PHYSICAL DESCRIPTION OF MONUMENTS REBUILT OR PERPETUATED

CALIFORNIA COORDINATE SYSTEM ORDER: FIRST SECOND THIRD
 STATIONS USED: NGS (USC & GS) STATE COUNTY OTHER STATION _____ STATION _____
 ZONE _____ ELEVATION _____ NORTHINGS (Y) _____ EASTINGS (X) _____

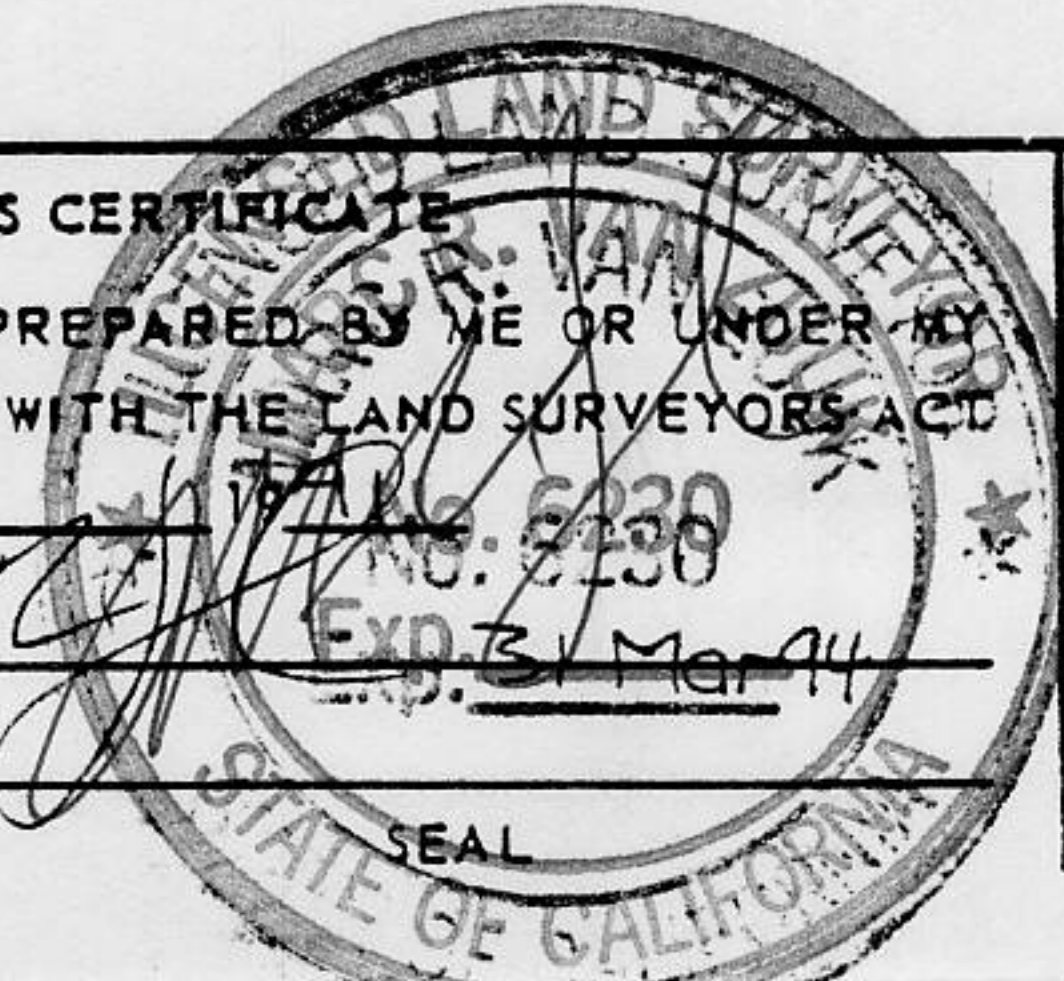


SURVEYOR'S CERTIFICATE

THIS CORNER RECORD WAS PREPARED BY ME OR UNDER MY DIRECTION IN CONFORMANCE WITH THE LAND SURVEYORS ACT ON 12 Aug

SIGNED: [Signature]

L.S. or R.C.E. No.: _____



COUNTY SURVEYOR'S CERTIFICATE

THIS CORNER RECORD WAS RECEIVED 9/3 1991 AND EXAMINED AND FILED 9/4 1991

BY: John Ruffner

TITLE: DEPUTY COUNTY SURVEYOR

DOCUMENT No. _____

STATEMENT ON BACK OF SHEET YES NO

J/N 96.01 original

Book 2, Corner Records, Page 87