

**CORNER RECORD**

COUNTY OF Placer T. 16N R. 17E MD3E MERIDIAN CALIFORNIA

CORNER TYPE: GOV'T. CORNER  MEANDER  RANCHO  CONTROL  OTHER

CORNER IDENTIFICATION - DATE OF VISIT 26 June 1991



Portion lots 2-6 of Fulton Acres  
as recorded in Book D of Maps, at Page 93

CORNER - LEFT AS FOUND  FOUND AND TAGGED  REESTABLISHED OBLITERATED CORNER  REBUILT

PHYSICAL DESCRIPTION OF CORNER FOUND: EVIDENCE AND METHOD USED TO IDENTIFY OR REESTABLISH \_\_\_\_\_

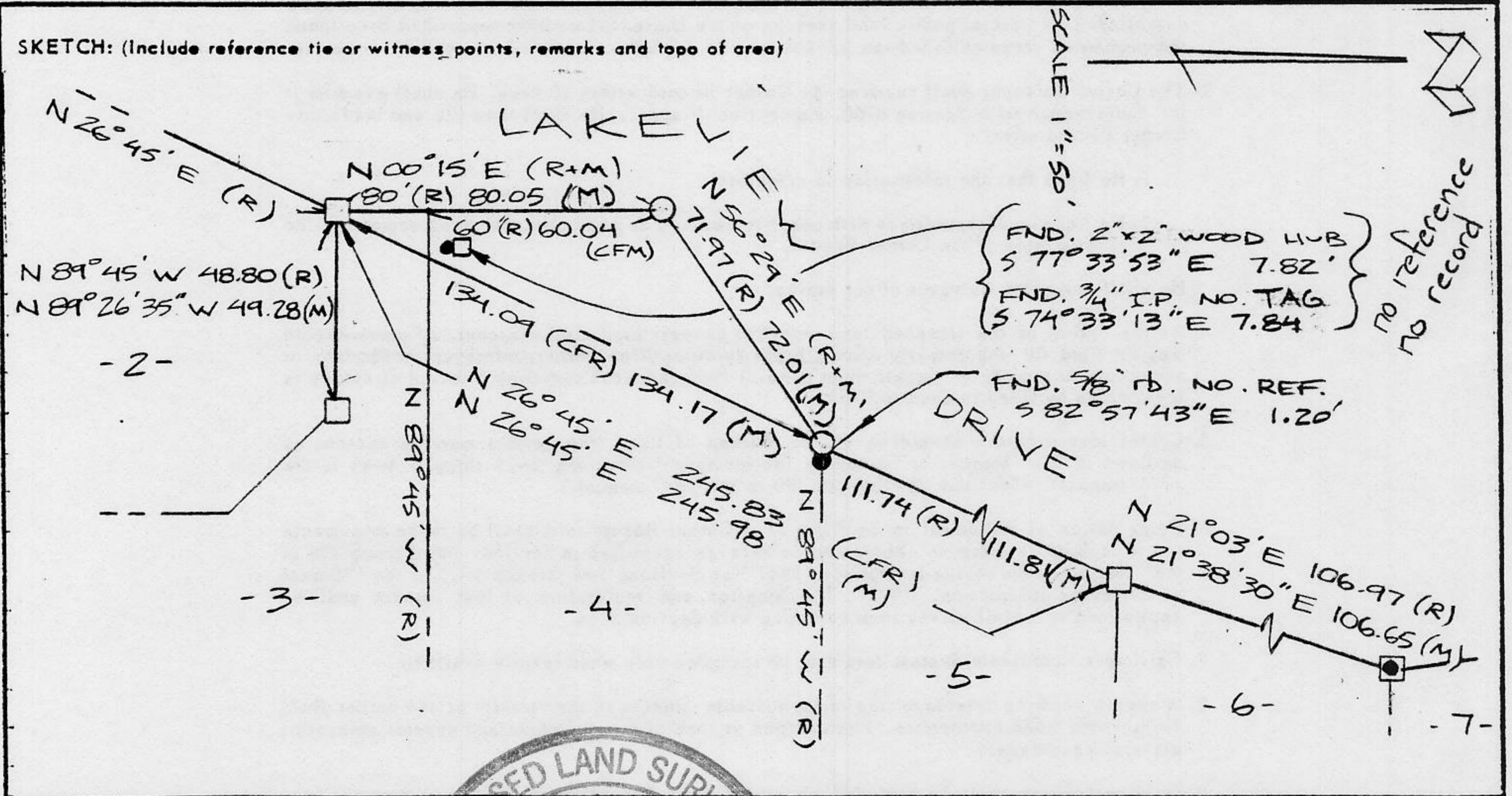
- = FOUND 2"x3" WOOD POST SCRIBED FOR LOT COR. per MB D/93
- = FOUND MONUMENT AS NOTED
- ⊙ = FOUND ORIG. WOOD HUB WITH 1/2" ID DRIVEN THROUGH

PHYSICAL DESCRIPTION OF MONUMENTS REBUILT OR PERPETUATED \_\_\_\_\_

○ = SET 5/8" ID. L.S. 6230

CALIFORNIA COORDINATE SYSTEM ORDER: FIRST  SECOND  THIRD   
 STATIONS USED: NGS (USC & GS)  STATE  COUNTY  OTHER  STATION \_\_\_\_\_ STATION \_\_\_\_\_  
 ZONE \_\_\_\_\_ ELEVATION \_\_\_\_\_ NORTHINGS (Y) \_\_\_\_\_ EASTINGS (X) \_\_\_\_\_

SKETCH: (Include reference tie or witness points, remarks and topo of area)



**SURVEYOR'S CERTIFICATE**

THIS CORNER RECORD WAS PREPARED BY ME OR UNDER MY DIRECTION IN CONFORMANCE WITH THE LAND SURVEYORS ACT ON August 1991

SIGNED: \_\_\_\_\_

L.S. or R.C.E. No.: \_\_\_\_\_



**COUNTY SURVEYOR'S CERTIFICATE**

THIS CORNER RECORD WAS RECEIVED 9/3 1991 AND EXAMINED AND FILED 9/4 1991

BY: John Rodgers  
TITLE: DEPUTY COUNTY SURVEYOR

DOCUMENT No. \_\_\_\_\_

STATEMENT ON BACK OF SHEET

YES  NO

Book 2, Corner Records, Page 90