

CORNER RECORD

COUNTY OF PLACER T. 16 N R. 17 E M.D. - MERIDIAN CALIFORNIA

CORNER TYPE: GOV'T. CORNER MEANDER RANCHO CONTROL OTHER
 CORNER IDENTIFICATION - DATE OF VISIT 12/4 1990



LOT 555 DOLLAR POINT, UNIT No. 9
 per BOOK I OF SUBDIVISIONS page 63

CORNER - LEFT AS FOUND FOUND AND TAGGED REESTABLISHED OBLITERATED CORNER REBUILT

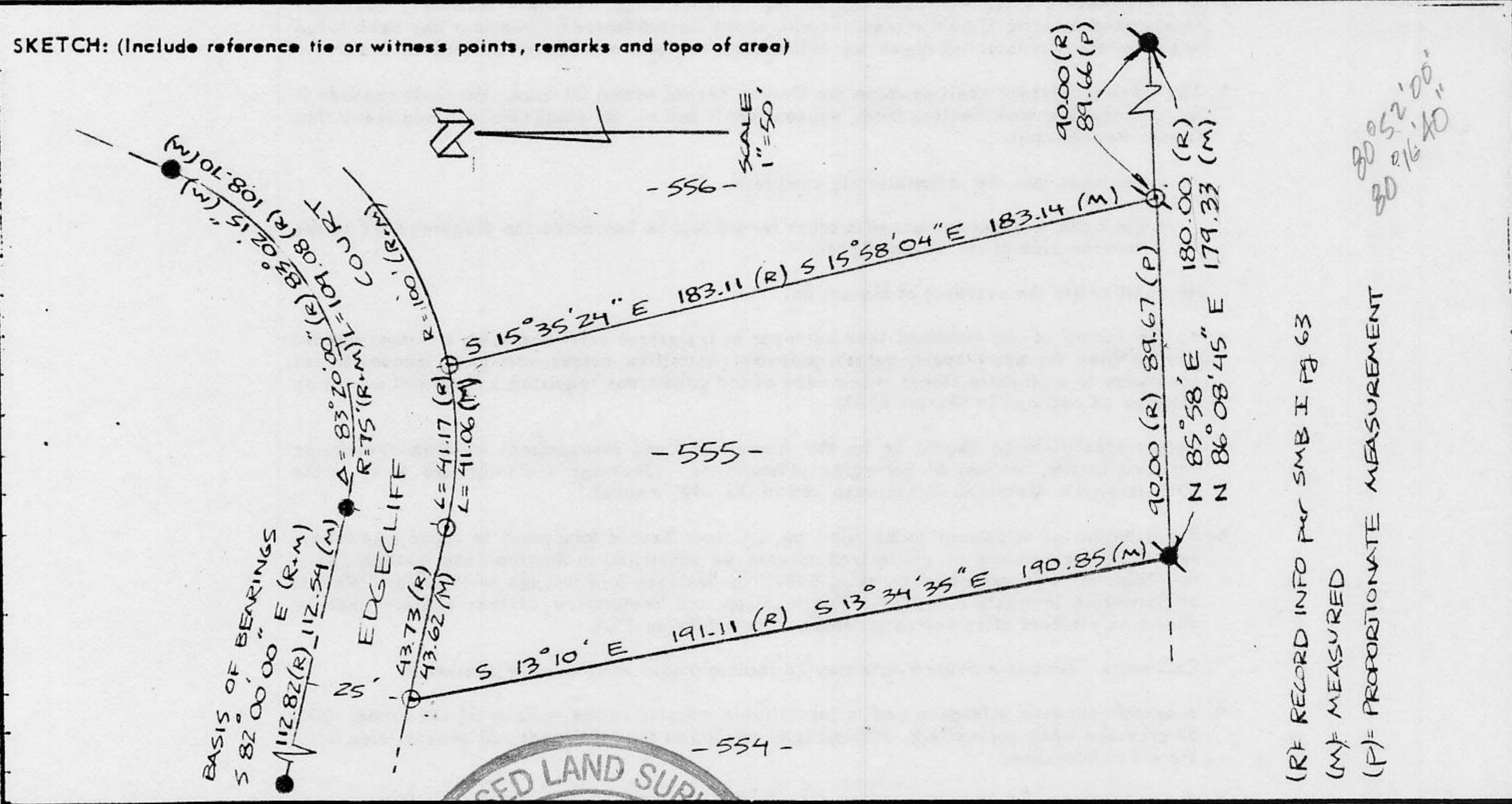
PHYSICAL DESCRIPTION OF CORNER FOUND: EVIDENCE AND METHOD USED TO IDENTIFY OR REESTABLISH _____

- FOUND RR SPIKE IN LIEU OF 5/8" BOLT per SMB I pg 63
- FOUND 1/2" IRON PIN " " " " "

PHYSICAL DESCRIPTION OF MONUMENTS REBUILT OR PERPETUATED _____

- SET 5/8" L.S. 6230
- SET NAIL & TAG L.S. 6230 IN BOULDER

CALIFORNIA COORDINATE SYSTEM ORDER: FIRST SECOND THIRD N/A
 STATIONS USED: NGS (USC & GS) STATE COUNTY OTHER STATION _____ STATION _____
 ZONE _____ ELEVATION _____ NORTHINGS (Y) _____ EASTINGS (X) _____

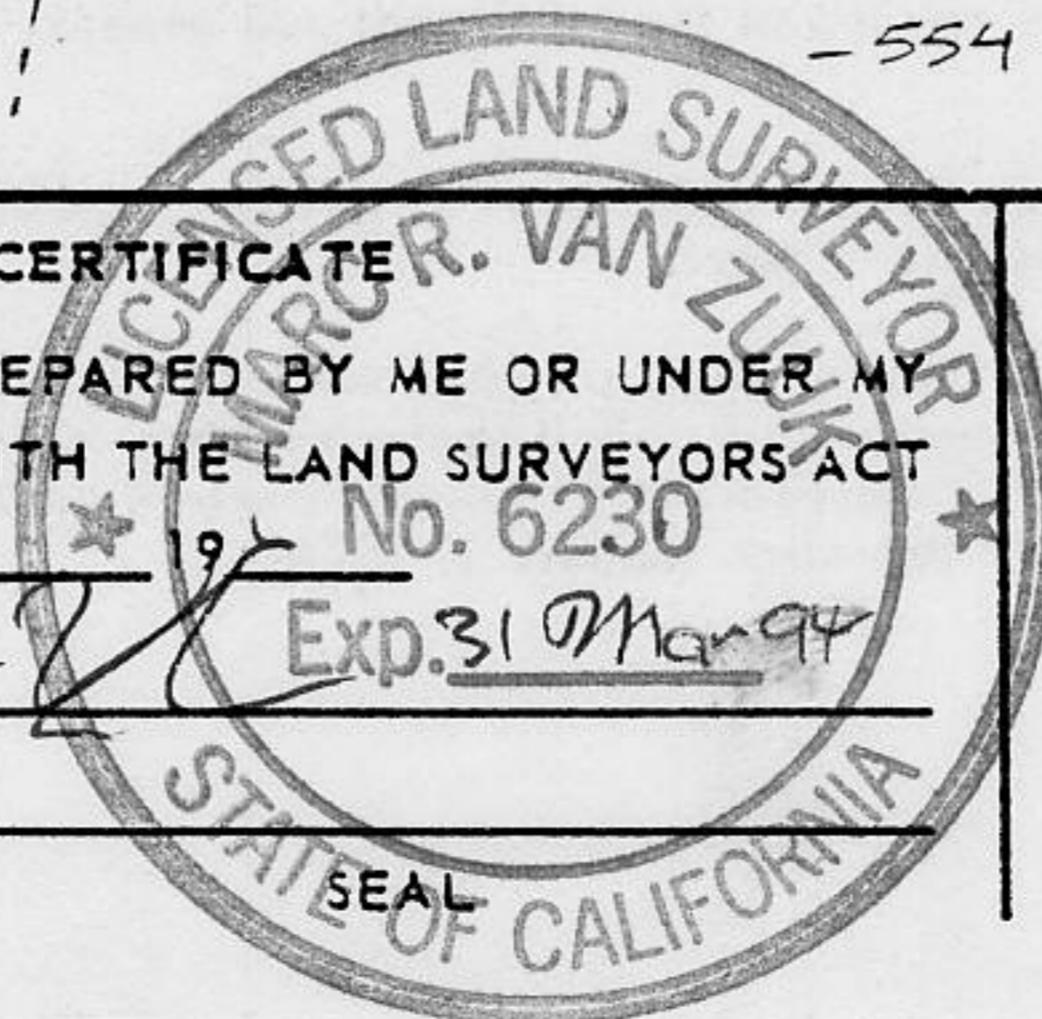


SURVEYOR'S CERTIFICATE

THIS CORNER RECORD WAS PREPARED BY ME OR UNDER MY DIRECTION IN CONFORMANCE WITH THE LAND SURVEYORS ACT ON DEC 1990

SIGNED: _____

L.S. or R.C.E. No.: _____



COUNTY SURVEYOR'S CERTIFICATE

THIS CORNER RECORD WAS RECEIVED 9/3 1991 AND EXAMINED AND FILED 9/4 1991

BY: John Ruffner
 TITLE: DEPUTY COUNTY SURVEYOR

DOCUMENT No. _____

STATEMENT ON BACK OF SHEET

YES NO

Book 2, Corner Records, Page 91