

CORNER RECORD

COUNTY OF PLACER T. 14 N R. 16 E M. D. MERIDIAN CALIFORNIA

CORNER TYPE: GOV'T. CORNER MEANDER RANCHO CONTROL OTHER
 CORNER IDENTIFICATION - DATE OF VISIT 03-19 1990



LOT 2 MCKINNEY SHORES SUBD.
BOOK G OF MAPS PAGE 25

CORNER - LEFT AS FOUND FOUND AND TAGGED REESTABLISHED OBLITERATED CORNER REBUILT

PHYSICAL DESCRIPTION OF CORNER FOUND: EVIDENCE AND METHOD USED TO IDENTIFY OR REESTABLISH

- FOUND 6x6 CHC MONUMENT
- FOUND 1/2" REBAR

PHYSICAL DESCRIPTION OF MONUMENTS REBUILT OR PERPETUATED

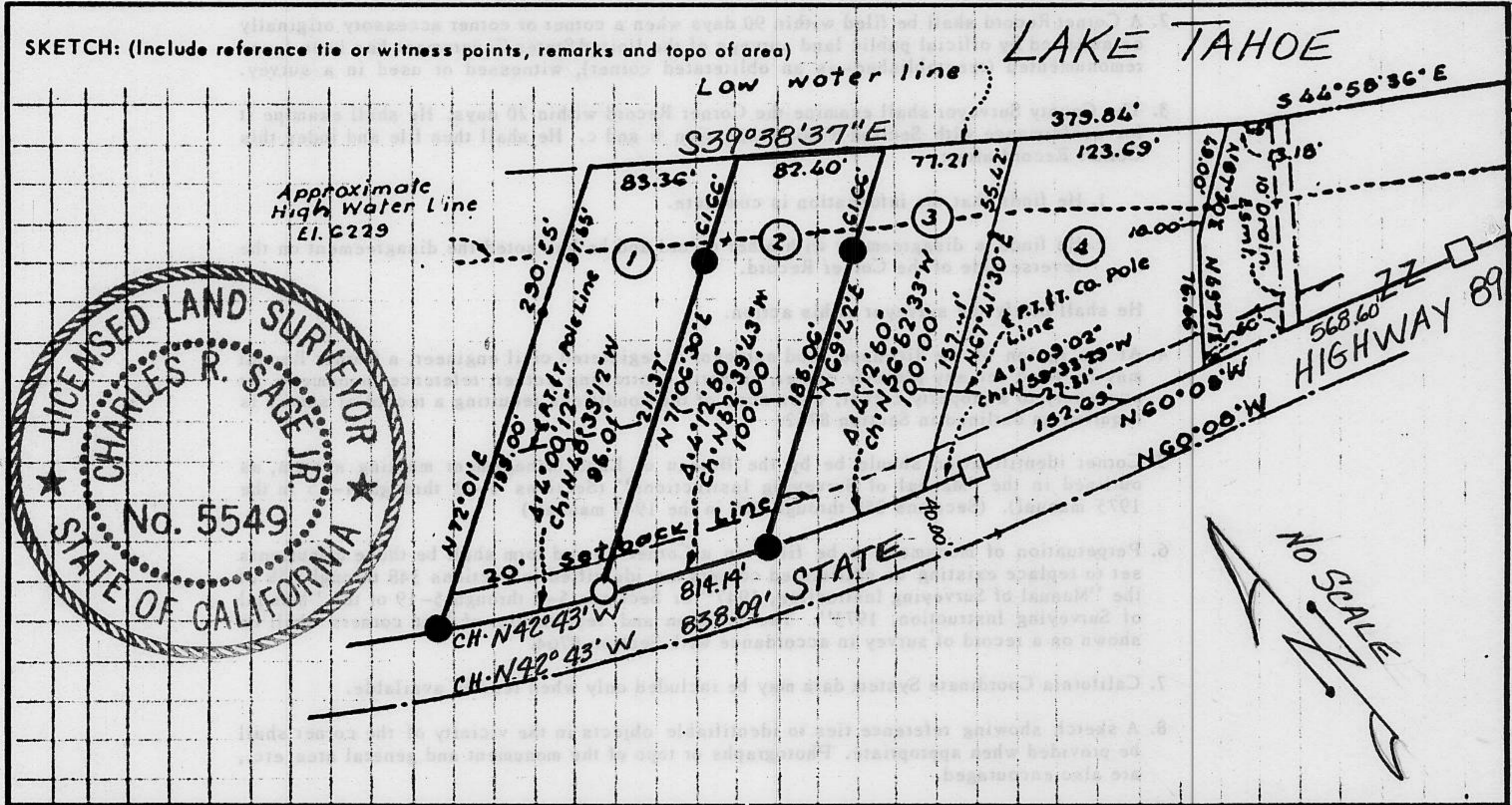
0 SET 3/4" IRON PIPE W/PLASTIC PLUG STAMPED A.S. 5549

CALIFORNIA COORDINATE SYSTEM ORDER: FIRST SECOND THIRD

STATIONS USED: NGS (USC & GS) STATE COUNTY OTHER STATION _____ STATION _____

ZONE _____ ELEVATION _____ NORTHINGS (Y) _____ EASTINGS (X) _____

SKETCH: (Include reference tie or witness points, remarks and topo of area)



JN: 9020

SURVEYOR'S CERTIFICATE

THIS CORNER RECORD WAS PREPARED BY ME OR UNDER MY DIRECTION IN CONFORMANCE WITH THE LAND SURVEYORS ACT ON APRIL 6 1990

SIGNED: Charles R. Sage Jr.

L.S. or R.C.E. No.: L.S. 5549 EXP. 6-30-93

SEAL

COUNTY SURVEYOR'S CERTIFICATE

THIS CORNER RECORD WAS RECEIVED 12/15 1991 AND EXAMINED AND FILED 6/5 1992

BY: Bruce L. McDaniel
 TITLE: DEPUTY COUNTY SURVEYOR

DOCUMENT No. _____
 STATEMENT ON BACK OF SHEET

YES NO

Book 2, Corner Records, Page 148