

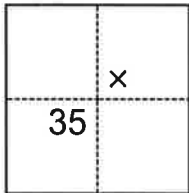
# CORNER RECORD

Agency Index B23 P46  
 Document Number 20200091

City of \_\_\_\_\_ County of \_\_\_\_\_ Placer \_\_\_\_\_, California  
 Brief Legal Description Lot 62, Hidden Valley Subdivision, Unit No. 3, E Maps 55, P.C.R.

### CORNER TYPE

### COORDINATES (Optional)



- Government Corner
- Meander
- Rancho
- Control
- Property
- Other

N. \_\_\_\_\_ E. \_\_\_\_\_  
 Elevation \_\_\_\_\_  
 Units  Metric  U.S. Survey Foot  
 Horizontal Datum \_\_\_\_\_  
 Zone \_\_\_\_\_ Epoch Date \_\_\_\_\_  
 Vertical Datum \_\_\_\_\_  
 Complies with Public Resources Code §§8801-8819  
 Complies with Public Resources Code §§8890-8902

Date of Survey October 28, 2020

NE 1/4, Sec 35, T11N, R7E

- PLS Act Ref.:  8765(d)  8771  8773  Other:
- Corner/Monument:  Left as found  Established  Rebuilt  Pre-Construction  
 Found and tagged  Reestablished  Referenced  Post-Construction

Narrative of corner identified and monument as found, set, reset, replaced, or removed:

See sheet #2 for description(s):

All property corners of Lot 62 were found in record positions per E MAPS 55, except SE corner. No original corners were found per E MAPS 55, but monuments tagged LS 2515 were found per monuments set by CR Bk 4 Pg 77. The centerline monuments of Morningside Drive for Lot 61 of said Hidden Valley Subdivision were used to reestablish the Southeast corner of Lot 62.

### SURVEYOR'S STATEMENT

This Corner Record was prepared by me or under my direction in conformance with  
 the Professional Land Surveyors' Act on November 19, 2020  
 Signed *Michael E. Long* P.L.S. or R.C.E. No. 6815

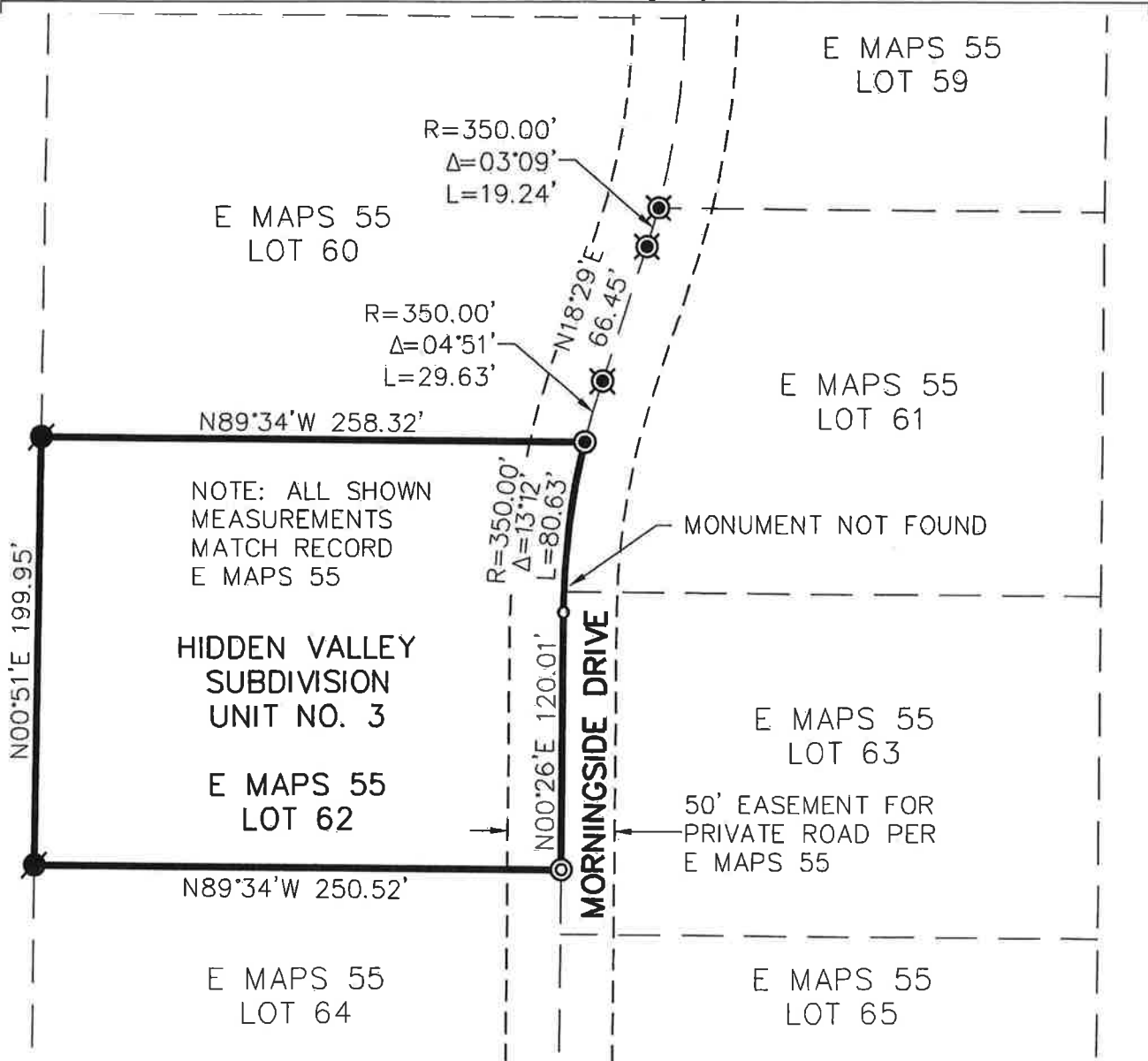


### COUNTY SURVEYOR'S STATEMENT

This Corner Record was received FEBRUARY 5, 2021  
 and examined and filed FEBRUARY 9, 2021  
 Signed *Benjamin J. Bardamian* P.L.S. or R.C.E. No. 8373  
 Title Deputy Co. Surveyor  
 County Surveyor's Comment \_\_\_\_\_

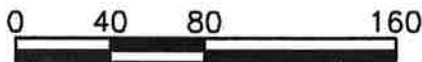


BOOK 23 OF CORNER RECORDS, PAGE 46



**LEGEND:**

- ⊗ FND MONUMENT WELL W/ PUNCHED RAILROAD SPIKE STAMPED "LS 4751" PER CR BK 4 PG 77
- ⊙ FND MONUMENT WELL W/ PUNCHED RAILROAD SPIKE STAMPED "LS 2515" PER CR BK 4 PG 77
- FND 1/2" REBAR W/ BRASS SLEEVE STAMPED "LS 2515", NO RECORD
- ⊙ SET MAG NAIL AND WASHER STAMPED "LS 6815"



SCALE: 1" = 80'



**WOOD RODGERS**  
 BUILDING RELATIONSHIPS ONE PROJECT AT A TIME  
 3301 C ST, BLDG. 100-B TEL 916.341.7760  
 SACRAMENTO, CA 95816 FAX 916.341.7767

BOOK 23 OF CORNER RECORDS, PAGE 46