

CORNER RECORD

COUNTY OF PLACER T. 16N R. 17E MD MERIDIAN CALIFORNIA

CORNER TYPE: GOV'T. CORNER MEANDER RANCHO CONTROL OTHER
 CORNER IDENTIFICATION - DATE OF VISIT 9-21 19 88

33

LOT 316, DOLLAR HILL NO. 6, AS PER I MAPS 15

CORNER - LEFT AS FOUND FOUND AND TAGGED REESTABLISHED OBLITERATED CORNER REBUILT

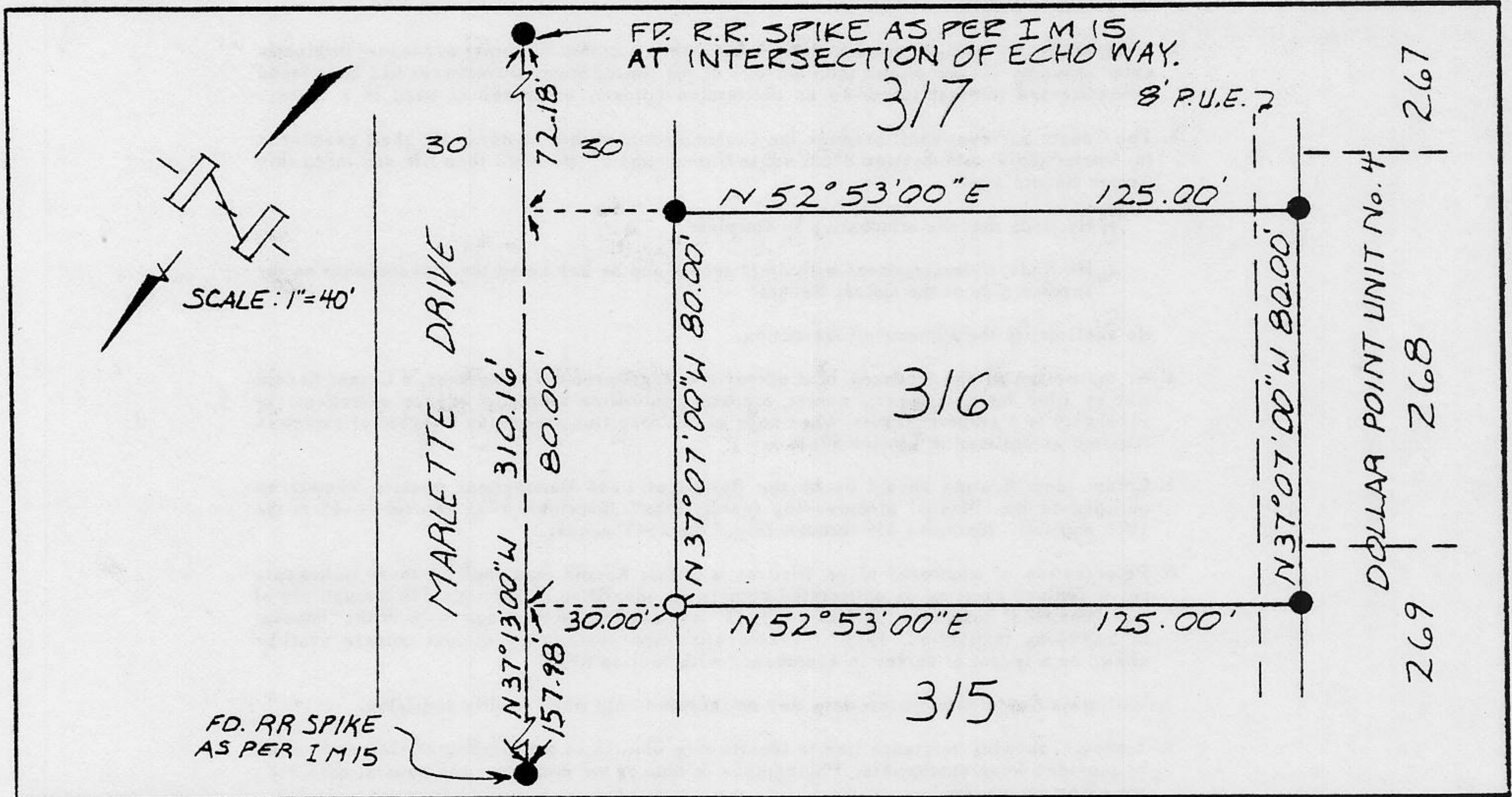
PHYSICAL DESCRIPTION OF CORNER FOUND: EVIDENCE AND METHOD USED TO IDENTIFY OR REESTABLISH _____

● ~ FOUND 3/4" IRON PIN TAGGED "R.C.E. 8189" UNLESS OTHERWISE NOTED

PHYSICAL DESCRIPTION OF MONUMENTS REBUILT OR PERPETUATED _____

○ ~ SET 5/8" REBAR WITH YELLOW PLASTIC CAP STAMPED L.S. 3422

CALIFORNIA COORDINATE SYSTEM ORDER: FIRST SECOND THIRD
 STATIONS USED: NGS (USC & GS) STATE COUNTY OTHER STATION N/A STATION _____
 ZONE _____ ELEVATION _____ NORTHINGS (Y) _____ EASTINGS (X) _____

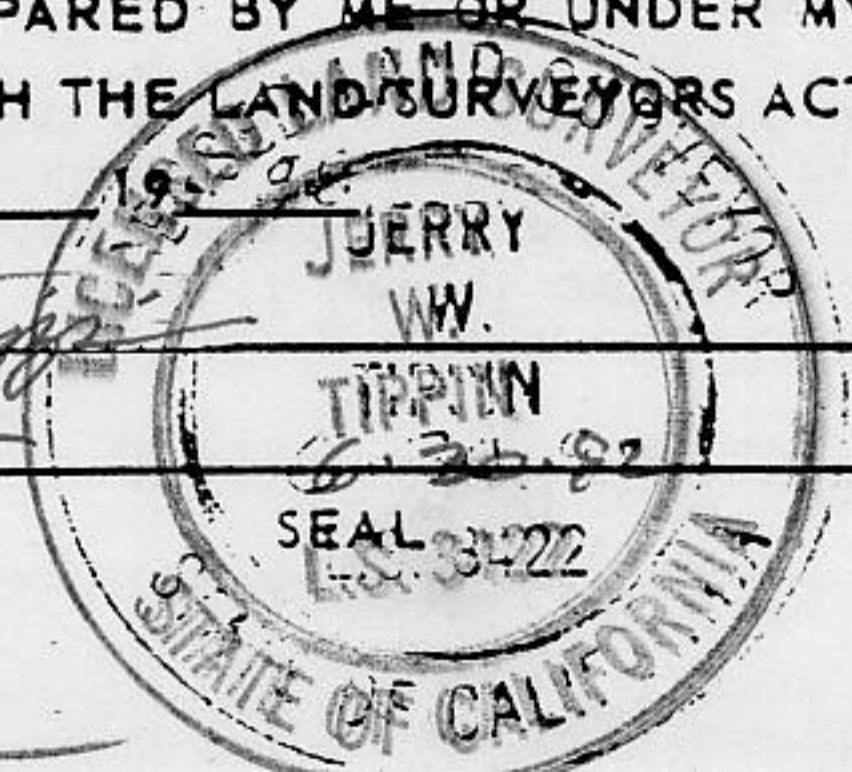


SURVEYOR'S CERTIFICATE

THIS CORNER RECORD WAS PREPARED BY ME OR UNDER MY DIRECTION IN CONFORMANCE WITH THE LAND SURVEYORS ACT ON Oct 26 1988

SIGNED: [Signature]

L.S. or R.C.E. No.: P. 3422



COUNTY SURVEYOR'S CERTIFICATE

THIS CORNER RECORD WAS RECEIVED DECEMBER 18 19 91 AND EXAMINED AND FILED DECEMBER 19 19 91

BY: Bruce M. Daniel
 TITLE: DEPUTY COUNTY SURVEYOR

DOCUMENT No. _____

STATEMENT ON BACK OF SHEET

YES NO

J/N 330.00

Book 2, CORNER RECORDS, PAGE 102