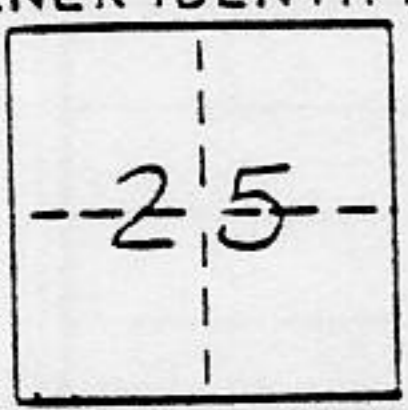


**CORNER RECORD**

COUNTY OF PLACER T. 15N R. 16E MOUNT DIABLO MERIDIAN CALIFORNIA  
 CORNER TYPE: GOV'T. CORNER  MEANDER  RANCHO  CONTROL  OTHER   
 CORNER IDENTIFICATION - DATE OF VISIT SEPTEMBER 1988



LOT 24, SKYLAND NO. 2 AS PER BOOK F M 43

CORNER - LEFT AS FOUND  FOUND AND TAGGED  REESTABLISHED OBLITERATED CORNER  REBUILT

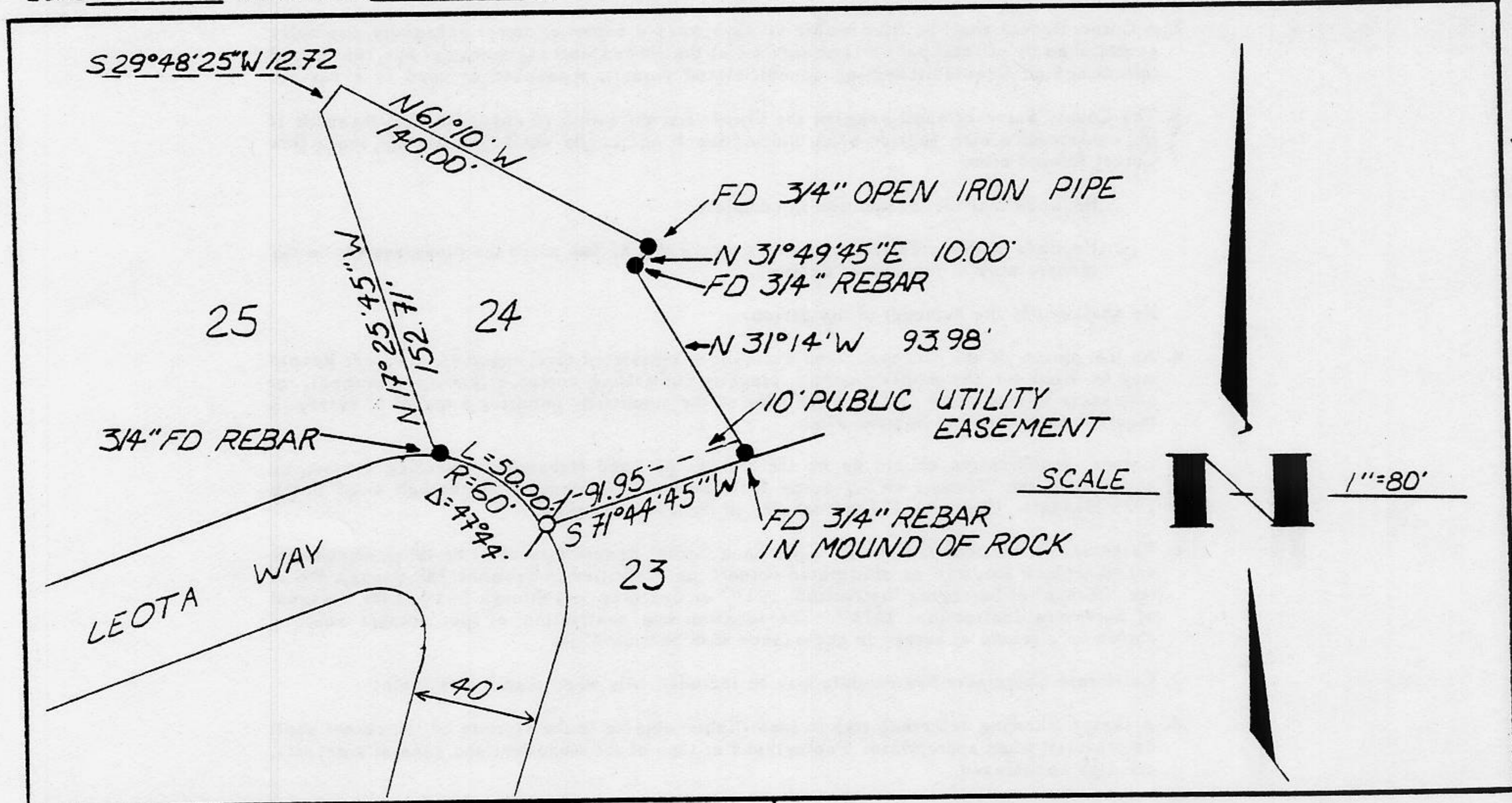
PHYSICAL DESCRIPTION OF CORNER FOUND: EVIDENCE AND METHOD USED TO IDENTIFY OR REESTABLISH \_\_\_\_\_

● FOUND MONUMENT AS INDICATED

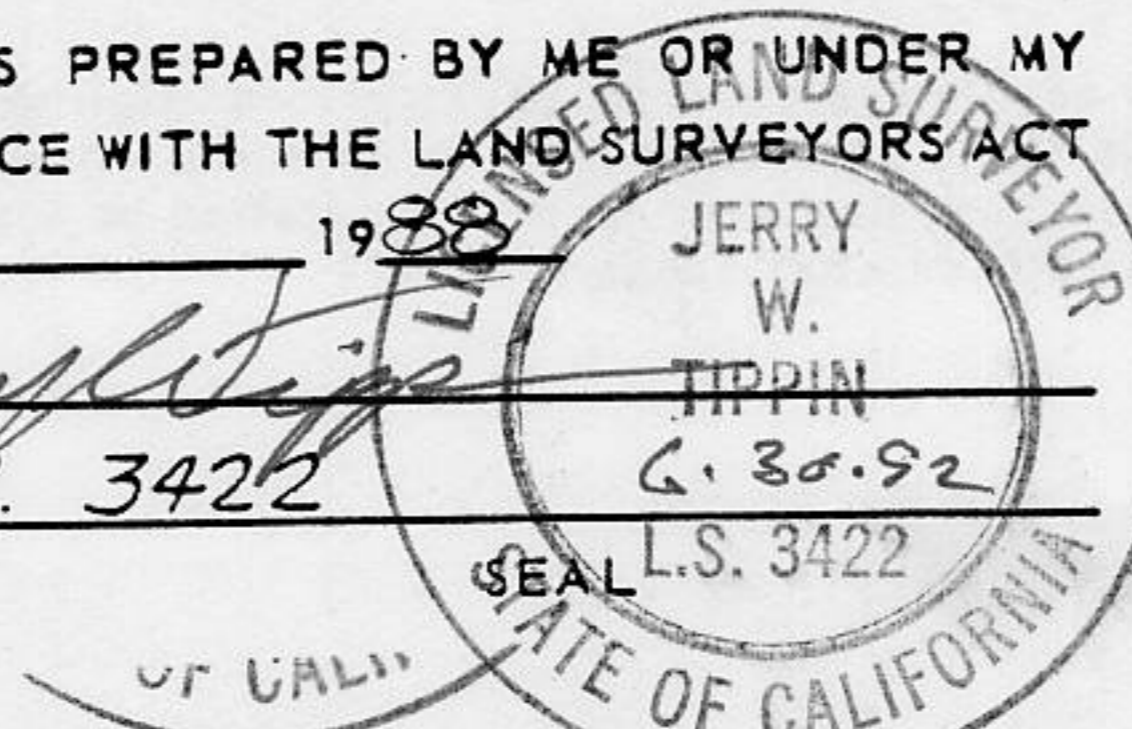
PHYSICAL DESCRIPTION OF MONUMENTS REBUILT OR PERPETUATED \_\_\_\_\_

⊙ SET 5/8" REBAR WITH YELLOW PLASTIC CAP L.S. 3422, UNLESS OTHERWISE INDICATED.

CALIFORNIA COORDINATE SYSTEM ORDER: FIRST  SECOND  THIRD  N/A  
 STATIONS USED: NGS (USC & GS)  STATE  COUNTY  OTHER  STATION \_\_\_\_\_ STATION \_\_\_\_\_  
 ZONE \_\_\_\_\_ ELEVATION \_\_\_\_\_ NORTHINGS (Y) \_\_\_\_\_ EASTINGS (X) \_\_\_\_\_



**SURVEYOR'S CERTIFICATE**  
 THIS CORNER RECORD WAS PREPARED BY ME OR UNDER MY DIRECTION IN CONFORMANCE WITH THE LAND SURVEYORS ACT ON Oct. 1988  
 SIGNED: Jerry W. Tippin  
 L.S. or R.C.E. No. L.S. 3422



**COUNTY SURVEYOR'S CERTIFICATE**  
 THIS CORNER RECORD WAS RECEIVED DECEMBER 18 1991  
 AND EXAMINED AND FILED DECEMBER 19 1991  
 BY: Bari S. McDaniel  
 TITLE: DEPUTY COUNTY SURVEYOR  
 DOCUMENT No. \_\_\_\_\_  
 STATEMENT ON BACK OF SHEET YES  NO

BOOK 2, CORNER RECORDS, PAGE 104

J/K 318.00